

// ARGUS AND DUNLOP HIFLEX

ALFAGOMMA GROUP

DUNLOP HIFLEX relies on Argus expertise in manufacturing and supplying high-quality hydraulic components. Many years of experience and constant effort combined with the integration in a global leading company like **ALFAGOMMA**, enable **DUNLOP HIFLEX** and Argus to quickly and flexibly respond to customers' needs.

 **ALFAGOMMA** //  **DUNLOP HIFLEX** //  **HIFLEX** //  **ARGUS**

// ARGUS IN SWEDEN



Halmstad - Head office

Kistinge industriområde, Seldonsvägen 2, Box 536, SE - 301 80 Halmstad – Tel +46 (0) 104 14 44 00
info@dunlophiflex.se – halmstad@dunlophiflex.se – www.dunlophiflex.se

Borlänge

borlänge@dunlophiflex.se
0104 14 46 00

Göteborg

goteborg@dunlophiflex.se
0104 14 45 40

Malmö

malmo@dunlophiflex.se
0104 14 45 00

Norrköping

norrkoping@dunlophiflex.se
0104 14 47 70

Stockholm

stockholm@dunlophiflex.se
0104 14 45 80

Umeå

umea@dunlophiflex.se
0104 14 45 31

Växjö

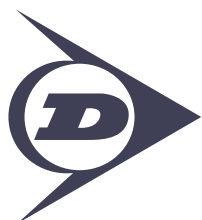
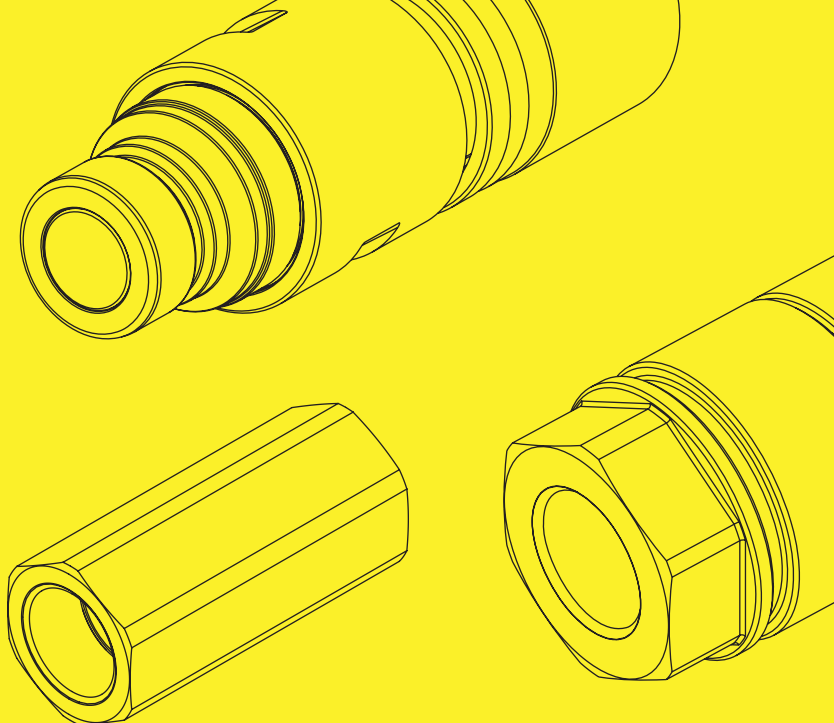
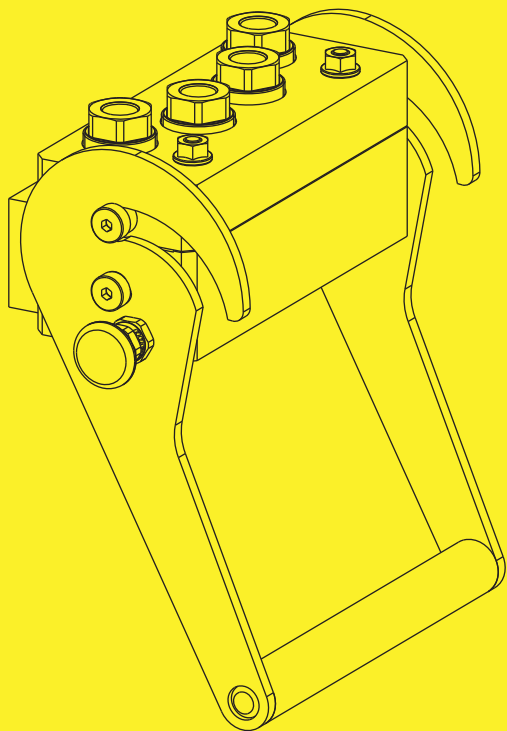
vaxjo@dunlophiflex.se
0104 14 45 10

Örebro

orebro@dunlophiflex.se
0104 14 45 50

Östersund

ostersund@dunlophiflex.se
0104 14 46 10



HEAD OFFICE

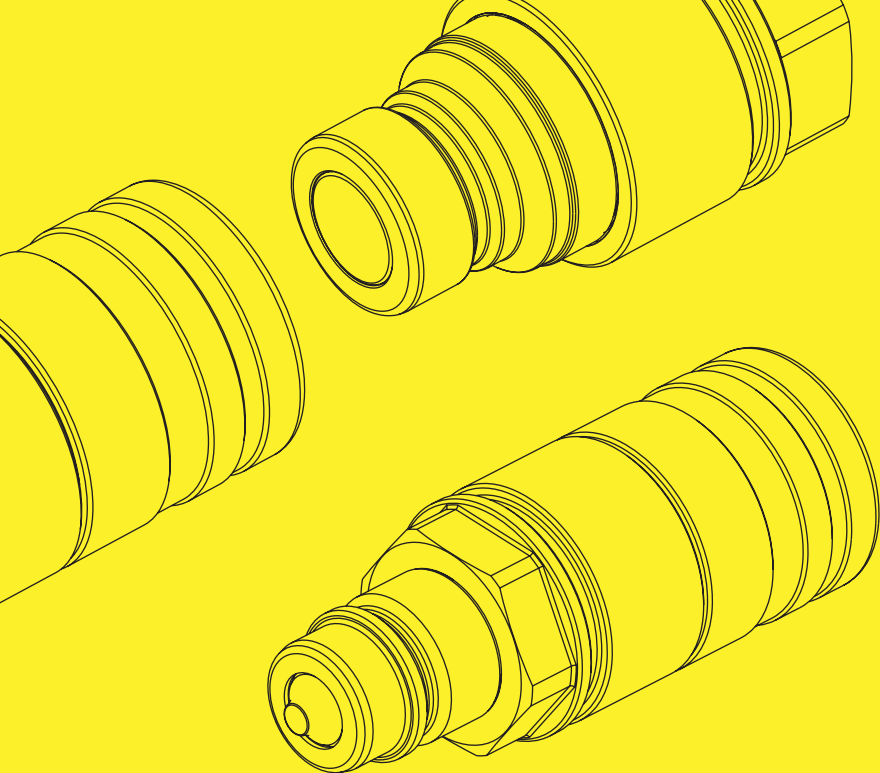
Dunlop Hiflex AB

Kistinge Industriområde, Seldonsvägen 2, Box 536

301 80 Halmstad (Sweden)

Tel +46 (0) 104 14 44 00

info@dunlophiflex.se – www.dunlophiflex.se



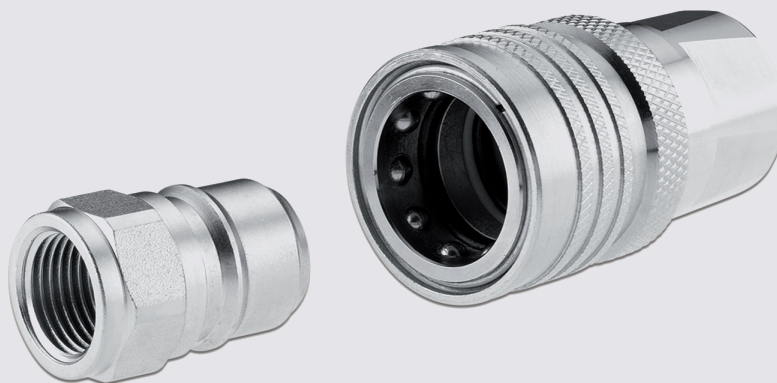
SLK **QUICK RELEASE COUPLINGS NORDIC SERIES**



// SLK

LOCKABLE TYPE POPPET

TOP COAT



DN 6 to 25



to max WP 450 bar

- // Locking system for safety purposes
- // Optional pressure elimination system
- // Compatibility with other couplings in-use
- // Nordic range

General features: ARGUS SLK are used for quick coupling and uncoupling of hydraulic lines. During the coupling action in zero or low-pressure ranges, valves that release or block the flow are automatically activated. The SLK quick release coupling, formed by the coupling plug and the coupling socket, is coupled by pushing on a sleeve. This guarantees a flush connection between the two coupling halves. The sleeve is designed so that it has only to be moved in the relevant direction for disconnecting or connecting of coupling halves.

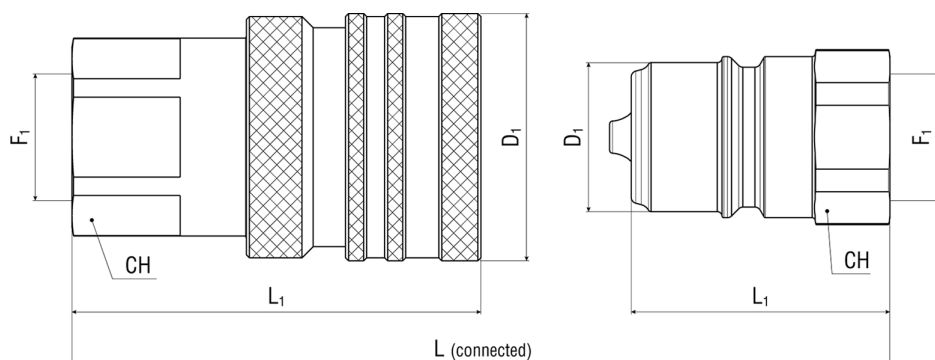
Materials: galvanised steel with hardened parts subject to wear – NBR O-rings (other materials optional). Top Coat Cr-III zinc plating with additional trivalent passivation for outstanding surface protection.

Application: suitable for liquid lines with mineral oil-based hydraulic fluids to DIN 51524 T1+T2.

Temperature range:
-30 °C +125 °C


Note: rated flow / pressure drop values on request.
Other sizes and connection types available on request.
Specific instructions for installation, use and maintenance are separately provided.






LOCKABLE TYPE - POPPET SLK *

Female coupling - Female thread


Item Code				WP Conn.	BP Disconn.	Thread 1	F1	D1	CH	L1	L
	Dash	mm	inch	MPa	MPa			mm	mm	mm	mm
1232506	04	6,0	1/4"	45,0	180,0	BSPP	1/4-19	26,0	21,0	60,0	82,00
1232507	06	10,0	3/8"	35,0	140,0	BSPP	3/8-19	34,0	25,0	61,5	76,50
1232508	08	13,0	1/2"	30,0	120,0	BSPP	1/2-14	40,0	30,0	67,5	85,50
1232509	12	19,0	3/4"	28,0	112,0	BSPP	3/4-14	50,0	38,0	76,0	94,50
1232510	16	25,0	1"	25,0	100,0	BSPP	1-11	60,0	48,0	92,0	113,50

Male coupling - Female thread


Item Code				WP Conn.	BP Disconn.	Thread 1	F1	D1	CH	L1	L
	Dash	mm	inch	MPa	MPa			mm	mm	mm	mm
1232511	04	6,0	1/4"	45,0	180,0	BSPP	1/4-19	11,9	19,0	48,5	82,00
1232512	06	10,0	3/8"	35,0	140,0	BSPP	3/8-19	19,9	22,0	38,0	76,50
1232513	08	13,0	1/2"	30,0	120,0	BSPP	1/2-14	24,7	27,0	42,5	85,50
1232514	12	19,0	3/4"	28,0	112,0	BSPP	3/4-14	32,7	36,0	47,0	94,50
1232515	16	25,0	1"	25,0	100,0	BSPP	1-11	40,9	45,0	56,5	113,50

LOCKABLE TYPE PRESSURE ELIMINATION SYSTEM - POPPET SLK *

Female coupling - Female thread

Item Code				WP Conn.	BP Disconn.	Thread 1	F1	D1	CH	L1	L
	Dash	mm	inch	MPa	MPa			mm	mm	mm	mm
1233056	06	10,0	3/8"	35,0	140,0	BSPP	3/8-19	34,0	25,0	61,5	76,50
1233057	08	13,0	1/2"	30,0	120,0	BSPP	1/2-14	40,0	30,0	67,5	85,50
1233058	12	19,0	3/4"	28,0	112,0	BSPP	3/4-14	50,0	38,0	76,0	94,50
1233059	16	25,0	1"	25,0	100,0	BSPP	1-11	60,0	48,0	92,0	113,50

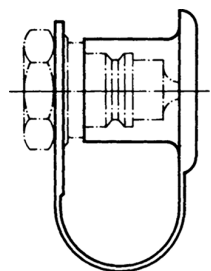
Male coupling - Female thread


Item Code				WP Conn.	BP Disconn.	Thread 1	F1	D1	CH	L1	L
	Dash	mm	inch	MPa	MPa			mm	mm	mm	mm
1233061	06	10,0	3/8"	35,0	140,0	BSPP	3/8-19	19,9	22,0	38,0	76,50
1233062	08	13,0	1/2"	30,0	120,0	BSPP	1/2-14	24,7	27,0	42,5	85,50
1233063	12	19,0	3/4"	28,0	112,0	BSPP	3/4-14	32,7	36,0	47,0	94,50
1233064	16	25,0	1"	25,0	100,0	BSPP	1-11	40,9	45,0	56,5	113,50

*BSPP connection according to DIN 3852-2-x

STANDARD SLK NORDIC SERIES

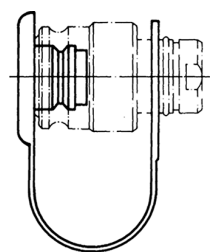
Dust cap for male coupling




Item Code	Colour	Material			
			Dash	mm	inch
1246226	BLK	PE	04	6,0	1/4"
1246227	BLK	PE	06	10,0	3/8"
1246228	BLK	PE	08	13,0	1/2"
1246229	BLK	PE	12	19,0	3/4"
1246230	BLK	PE	16	25,0	1"

STANDARD SLK NORDIC SERIES

Dust plug for female coupling



Item Code	Colour	Material			
			Dash	mm	inch
1246234	BLK	PE	04	6,0	1/4"
1246235	BLK	PE	06	10,0	3/8"
1246237	BLK	PE	08	13,0	1/2"
1246238	BLK	PE	12	19,0	3/4"
1246239	BLK	PE	16	25,0	1"

