

## SPECIAL HOSES ASSEMBLY & COMPETENCE CENTER



## // SPECIAL HOSES

Dunlop Hiflex offers a wide range of industrial hoses and couplings to meet the high demands of the market.

### HOSE

- // Composite Hoses
- // Stainless Steel Corrugated Hoses
- // PTFE Hoses
- // Rubber Industrial Hoses
- // Thermoplastic Industrial Hoses
- // Concrete Hoses



### FITTINGS

- // Custom made fittings and adaptors
- // Cam & Groove
- // Symmetric Guillemin
- // Storz
- // DIN11851 - SMS - Tri Clamp ISO/DIN
- // Victaulic
- // Claw Couplings
- // Safety Clamp (EN14 420 – EN 14 423)
- // Clamp and Band-it system
- // Flanges
- // Tank Wagon



The Dunlop Hiflex Special Hose Division focuses on all market segments.



**AGRICULTURE**



**CONSTRUCTION EQUIPMENT**



**FISH INDUSTRIES**



**FOOD & BEVERAGES**



**FORESTRY**



**INDUSTRIAL MACHINERY & MAINTENANCE**



**MATERIAL HANDLING**



**MILITARY & DEFENCE**



**MINING**



**OIL & GAS**



**PETROCHEMICAL**



**POWER GENERATION**



**SHIPBUILDING & MARINE**



**TRANSPORTATION**



## // SPECIAL HOSE DIVISION

Dunlop Hiflex is a part of the Alfagomma Group who is a global manufacturer specializing in highly engineered fluid handling systems designed for both hydraulic and industrial applications.

The company has expanded its **industrial hose assembly facilities** in **Scandinavia** by adding a **Special Hoses assembly & competence center** in Helsingborg, Sweden to cover the Scandinavian market.

- Rigorous quality assurance
- High flexibility
- High availability

The Alfagomma and Dunlop Hiflex **highly qualified technical team** is dedicated to **engineering calculations, simulations and mechanical drawings to assist customers** in the right choice of hoses and fittings and/or to **develop personalized solutions**.



### DUNLOP HIFLEX



2500m<sup>2</sup> stock and production of **special hoses, metal hoses, composite hoses** and **industrial hoses!**

**Direct shipments** throughout Scandinavia!

#### CONTACT

##### DUNLOP HIFLEX

Diabasgatan 5  
254 68 Helsingborg, Sweden  
[specialhoses@dunlophiflex.se](mailto:specialhoses@dunlophiflex.se)

# // ASSEMBLY PROCESS

1

## ASSEMBLY METHODS

Dunlop Hiflex offer different assembly methods depending on the application requirements:

- Crimping - Hose ID from 1/8" up to 10"
- Safety Clamps (EN14 420 – EN 14 423)
- Clamping and Banding
- External binding with wire
- Welding - performed by certified personnel



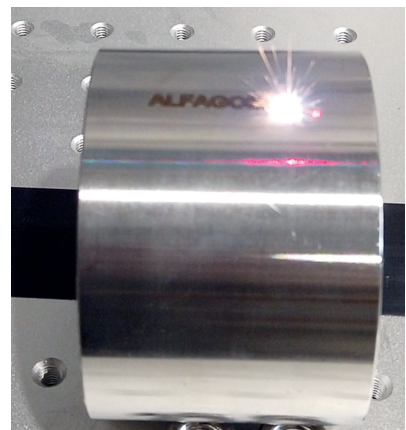
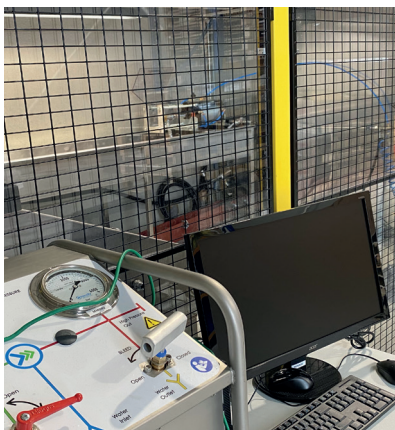
2

## QUALITY SYSTEM

Dunlop Hiflex and Alfagomma's assembly centers are committed to constant high quality and reliability.

The evaluation of the best solution for the customer application relies on international standards and regulations requirements (e.g. EN 1761, EN 12115, 2004/1935 EC, 2006/2023 EC, 2014/68 EU-PED).

The Quality System guarantees full traceability of all assemblies using laser engraving or other suitable marking.





# 3

## TESTS

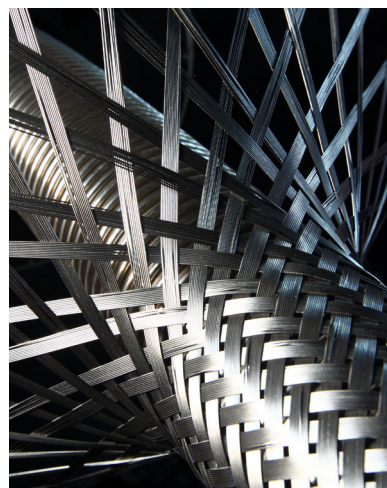
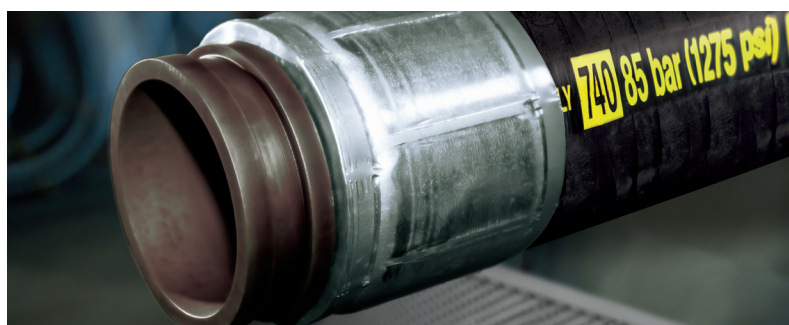
We provide following tests and certifications:

PRESSURE TESTS

ELECTRICAL  
CONDUCTIVITY  
( $\Omega$ , M,  $\Omega$ /T)

PERSONALIZED  
TESTS ON REQUEST

CONFORMITY CERTIFICATES ARE ISSUED ACCORDING TO EN10204 2.1, 2.2 AND 3.1.





HEAD OFFICE DUNLOP HIFLEX SCANDINAVIA  
**Dunlop Hiflex AB**  
Seldonsvägen 2, 302 62 Halmstad - Sweden  
Tel +46 (0) 10 414 44 00  
info@dunlophiflex.se  
www.dunlophiflex.se