

CONCRETE INDUSTRY





Dunlop Hiflex is one of the market's most established suppliers of hydraulic fluid conveyance and industrial fluid conveyance products and systems.

The manufacturing of hoses and couplings, for both high and low pressure, gives Dunlop Hiflex extensive knowledge of the products and enables us to put forward suggestions for new solutions and improvements for the industry.





REV.1.1

// INDEX

// DUNLOP HIFLEX	6-7
// ASSEMBLED CONCRETE HOSES	8-10
// CONCRETE HOSES	11-12
// CONCRETE COUPLINGS	13-16
// MORTAR HOSES	17
// MORTAR COUPLINGS	18-22

// ICON



Conductive tube & cover
 $R \leq 10^6 \Omega/\text{length}$



High performance
product

// DUNLOP HIFLEX

// THE FIRST HOSES

Scotland, 1887. John Boyd Dunlop, a Scottish born inventive veterinarian observes his son as he's cycling down a bumpy road. The bike has hard solid rubber tyres and the ride is rough and shaky. The ride is neither fast nor particularly comfortable. He then comes up with an idea of wrapping an air filled rubber hose around the rim. In 1888 he patented the idea and the rest as we say, is history.



// A PRODUCT THAT CHANGED THE WORLD

John Dunlop's idea about air-filled rubber hoses was the beginning of an industrial manufacturing of air-filled tires and, later, a development of hydraulic and industrial hoses.

We, at Dunlop Hiflex, **are specialists at hoses for high and low pressure** and through our unique position with **manufacturing** in our own factories, in **Halmstad, Kolding, Bergen, Kristiansand, Stavanger** and **Pirkkala**, we are leading the development of the **next generation of top-quality hoses**. Moreover, our widespread branch network throughout the Nordic Countries and Germany provides customers with an excellent service.

Today we are a part of the Alfacomma Group, one of the leading manufactures of hoses in the world. But we still carry the name that originated from a Scot and bike with pride.

6

PLANTS

39

STORES

121

DISTRIBUTORS

FINLAND

- Hämeenlinna
- Imatra
- Joensuu
- Jyväskylä
- Kotka
- Kouvola
- Lahti
- Mikkeli
- Pirkkala**
- Pori
- Rovaniemi
- Turku
- Vantaa

ESTONIA

- Tallinn
- Tartu

SWEDEN

- Borlänge
- Göteborg
- Halmstad**
- Helsingborg Ljungby
- Malmö
- Norrköping
- Stockholm Järfälla
- Stockholm Kungens Kurva
- Umeå
- Växjö
- Örebro

DENMARK

- Kolding**

NORWAY

- Bergen**
- Harstad
- Kristiansand**
- Kjeller
- Stavanger**
- Sarpsborg
- Tromsø
- Trondheim
- Ålesund

GERMANY

- Hamburg
- Nürnberg
- Wiehl

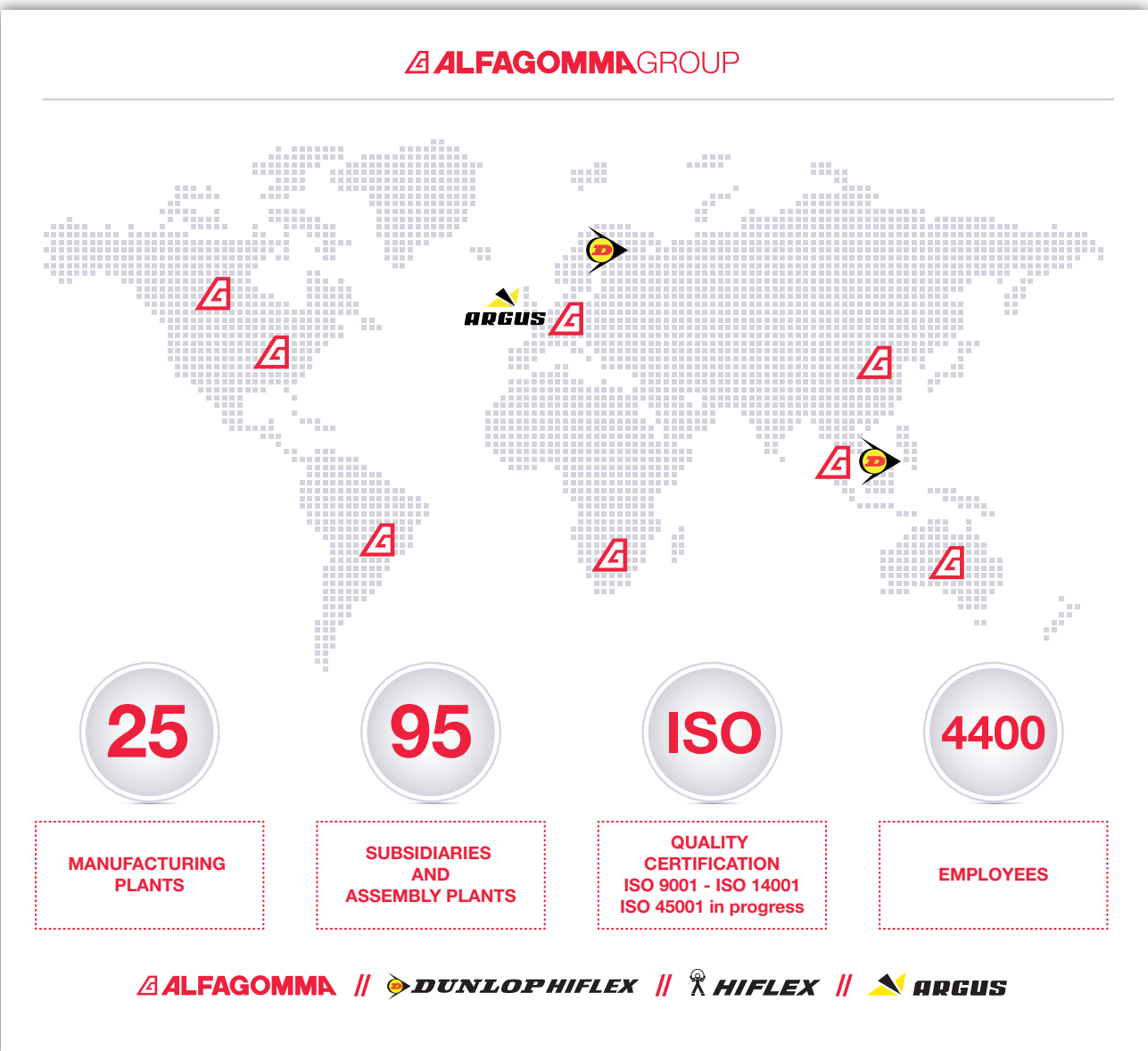


// ALFAGOMMA GROUP

Dunlop Hiflex was acquired by Alfacomma Group in 2005. The Group, established in 1956, is a global manufacturer specialized in highly engineered, technically demanding hydraulic and industrial products, created with a commitment to excellence in quality and innovation.

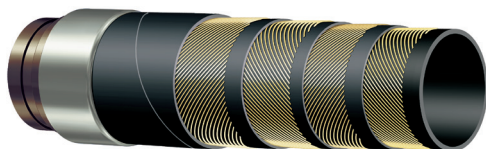
// RESEARCH AND DEVELOPMENT

Alfacomma is focused on continuous improvement, proven by its by its constant engineering innovation of products, processes and production excellence, which improving products performance, safety and efficiency. The company's distinguishing feature is its ability to innovate, by investing in research and development of products and materials, and designing solutions that meet customer's requirements, in compliance with international regulations.



// ASSEMBLED CONCRETE HOSES

// 740AA



Concrete pumping 100 bar (1500 psi) - Heavy duty - Steel reinforced

Tube: black conductive NR - abrasion resistant.

Reinforcement: high-tensile steel cords.

Cover: black conductive SBR/NR - abrasion and ozone resistant.

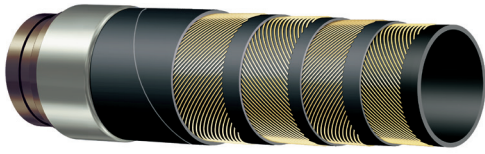
Application: high pressure concrete pumping.

Temperature: -30 °C +80 °C (-22 °F +176 °F)

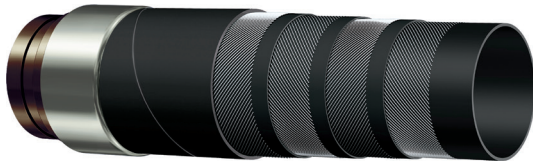
Item Code	Description	ID (in)	Length (m)	Coupling type	Head DN (in)	Head DN (mm)	Number of couplings	BR (mm)	Kg (m)
9033292	IASS-740AA 051/1CALIF 2" 10M AG	2	10	CALIF	2	78	2	255	2,1
9033294	IASS-740AA 051/1CALIF 2" 20M AG	2	20	CALIF	2	78	2	255	2,1
9033291	IASS-740AA 051/2CALIF 2" 10M AG	2	10	CALIF	2	78	2	255	2,1
9033293	IASS-740AA 051/2CALIF 2" 20M AG	2	20	CALIF	2	78	2	255	2,1
9052666	IASS-740AA 051/1VICT 3" 10M AG	2	10	VICT	3	89	1	255	2,1
9052667	IASS-740AA 051/1VICT 3" 30M AG	2	30	VICT	3	89	1	255	2,1
9052664	IASS-740AA 051/2VICT 3" 5M AG	2	5	VICT	3	89	2	255	2,1
9052665	IASS-740AA 051/2VICT 3" 7,5M AG	2	7,5	VICT	3	89	2	255	2,1
9052663	IASS-740AA 051/2VICT 3" 10M AG	2	10	VICT	3	89	2	255	2,1
9083544	IASS-740AA 076/1VICT 3" 4M AG	3	4	VICT	3	89	1	380	4,49
9119299	IASS-740AA 076/1VICT 3" 5M AG	3	5	VICT	3	89	1	380	4,49
9007903	IASS-740AA 076/2VICT 3" 3M AG	3	3	VICT	3	89	2	380	4,49
9007986	IASS-740AA 076/2VICT 3" 4M AG	3	4	VICT	3	89	2	380	4,49
9007491	IASS-740AA 076/2VICT 3" 5M AG	3	5	VICT	3	89	2	380	4,49
9007493	IASS-740AA 076/2VICT 3" 10M AG	3	10	VICT	3	89	2	380	4,49
9112103	IASS-740AA 090/1 VICT 4 1/2" 4M AG	3 1/2	4	VICT	4 1/2	127	1	450	5,61
9008631	IASS-740AA 102/1VICT 4"1/2 4M AG	4	4	VICT	4 1/2	127	1	510	6,52
9007494	IASS-740AA 102/2VICT 4"1/2 0,6M AG	4	0,6	VICT	4 1/2	127	2	510	6,52
9007520	IASS-740AA 102/2VICT 4"1/2 3M AG	4	3	VICT	4 1/2	127	2	510	6,52
9007527	IASS-740AA 102/2VICT 4"1/2 4M AG	4	4	VICT	4 1/2	127	2	510	6,52
9008694	IASS-740AA 127/2VICT 5"1/2 0,65M	5	0,65	VICT	5 1/2	148	2	635	9,72
9007580	IASS-740AA 127/2VICT 5"1/2 0,8M A	5	0,8	VICT	5 1/2	148	2	635	9,72
9009049	IASS-740AA 127/2VICT 5"1/2 1,5M A	5	1,5	VICT	5 1/2	148	2	635	9,72
9010890	IASS-740AA 127/2VICT 5"1/2 1M AG	5	1	VICT	5 1/2	148	2	635	9,72
9009050	IASS-740AA 127/2VICT 5"1/2 2M AG	5	2	VICT	5 1/2	148	2	635	9,72
9007579	IASS-740AA 127/2VICT 5"1/2 3M AG	5	3	VICT	5 1/2	148	2	635	9,72
9008162	IASS-740AA 127/2VICT 5"1/2 4M AG	5	4	VICT	5 1/2	148	2	635	9,72
9007685	IASS-740AA 127/2VICT 5"1/2 5M AG	5	5	VICT	5 1/2	148	2	635	9,72

REV.1.1

// 741AA

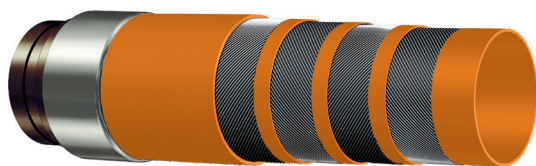
**Concrete pumping 100 bar (1500 PSI) - Extra service - Steel reinforced****Tube:** black conductive NR - abrasion resistant.**Reinforcement:** high-tensile steel cords.**Cover:** black conductive SBR/NR - abrasion and ozone resistant.**Application:** high pressure concrete pumping. Designed for long service life in heavy duty applications.**Temperature:** -30 °C +80 °C (-22 °F +176 °F)

Item Code	Description	ID (in)	Length (m)	Coupling type	Head DN (in)	Head DN (mm)	Number of couplings	BR (mm)	Kg (m)
9134985	IASS-741AA 051/2VICT 3" 5M AG IP	2	5	VICT	3	89	2	255	2,57
9072892	IASS-741AA 065/1VICT 3" 10M AG	2 1/2	10	VICT	3	89	1	315	3,30
9072899	IASS-741AA 065/2VICT 3" 4M AG 2	2 1/2	4	VICT	3	89	2	315	3,30
9072901	IASS-741AA 065/2VICT 3" 5M AG 2	2 1/2	5	VICT	3	89	2	315	3,30
9072902	IASS-741AA 065/2VICT 3" 10M AG	2 1/2	10	VICT	3	89	2	315	3,30
9072903	IASS-741AA 065/2VICT 3" 15M AG	2 1/2	15	VICT	3	89	2	315	3,30
9134986	IASS-741AA 076/2VICT 3" 3M AG	3	3	VICT	3	89	2	380	4,95
9140615	IASS-741AA 076/2VICT 3" 4,5M AG	3	4,5	VICT	3	89	2	380	4,95
9134987	IASS-741AA 076/2VICT 3" 5M AG	3	5	VICT	3	89	2	380	4,95
9008145	IASS-741AA 102/2VICT 4"1/2 4M AG	4	4	VICT	4 1/2	127	2	510	7,63

// 74SAA **NEW****Concrete pumping 85 bar (1275 psi) - Heavy duty - Textile reinforced****Tube:** black conductive NR - abrasion resistant.**Reinforcement:** high-tensile textile cords.**Cover:** black conductive SBR/NR - abrasion and ozone resistant.**Application:** high pressure concrete pumping. Special lightweight construction.**Temperature:** -30 °C +80 °C (-22 °F +176 °F)

Item Code	Description	ID (in)	Length (m)	Coupling type	Head DN (in)	Head DN (mm)	Number of couplings	BR (mm)	Kg (m)
9127495	IASS-74SAA 051/2VICT 2" 5M AG	2	5	VICT	2	60	2	255	2,15
9127496	IASS-74SAA 051/2VICT 2" 10M AG	2	10	VICT	2	60	2	255	2,15
9127497	IASS-74SAA 051/1VICT 3" 5M AG IP	2	5	VICT	3	89	1	255	2,15
9127498	IASS-74SAA 051/1VICT 3" 10M AG IP	2	10	VICT	3	89	1	255	2,15
9080219	IASS-74SAA 051/2VICT 3" 5M AG IP	2	5	VICT	3	89	2	255	2,15
9080218	IASS-74SAA 051/2VICT 3" 10M AG IP	2	10	VICT	3	89	2	255	2,15
9137176	IASS-74SAA 065/1VICT 3" 10M AG	2 1/2	10	VICT	3	89	1	315	2,7
9140946	IASS-74SAA 065/2VICT 3" 3M AG 2	2 1/2	3	VICT	3	89	2	315	2,7
9137177	IASS-74SAA065/2VICT 3" 4M AG 2	2 1/2	4	VICT	3	89	2	315	2,7
9137178	IASS-74SAA 065/2VICT 3" 5M AG 2	2 1/2	5	VICT	3	89	2	315	2,7
9137179	IASS-74SAA 065/2VICT 3" 10M AG	2 1/2	10	VICT	3	89	2	315	2,7
9137180	IASS-74SAA 065/2VICT 3" 15M AG	2 1/2	15	VICT	3	89	2	315	2,7
9127499	IASS-74SAA 076/1VICT 3" 4M AG	3	4	VICT	3	89	1	380	3,65
9127500	IASS-74SAA 076/1VICT 3" 5M	3	5	VICT	3	89	1	380	3,65
9127501	IASS-74SAA 076/1VICT 3" 10M AG	3	10	VICT	3	89	1	380	3,65
9127502	IASS-74SAA 076/2VICT 3" 3M AG	3	3	VICT	3	89	2	380	3,65
9127504	IASS-74SAA 076/2VICT 3" 4M AG	3	4	VICT	3	89	2	380	3,65
9080216	IASS-74SAA 076/2VICT 3" 5M AG	3	5	VICT	3	89	2	380	3,65
9127502	IASS-74SAA 076/2VICT 3" 10M AG	3	10	VICT	3	89	2	380	3,65

// CONCRETE FLAT HD **NEW**



Concrete Pumping 85 bar (1275 psi) Heavy Duty Textile reinforced

Tube: TPU - abrasion resistant.

Reinforcement: high tensile aramid yarns.

Cover: TPU - abrasion resistant.

Application: Lay flat end hose for concrete pumping.

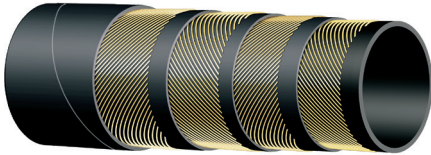
Temperature: -50 °C +75 °C (-58 °F +167 °F)

Item Code	Description	ID (in)	Length (m)	Coupling type	Head DN (in)	Head DN (mm)	Number of couplings	Kg (m)
9139094	CONCRETE FLAT HD 110/1VICT 4 1/2" 4M	4	4	VICT	4 1/2	127	1	1,73
9139095	CONCRETE FLAT HD 110/1VICT 4 1/2" 6M	4	6	VICT	4 1/2	127	1	1,73
9139096	CONCRETE FLAT HD 110/1VICT 4 1/2" 8M	4	8	VICT	4 1/2	127	1	1,73
9139097	CONCRETE FLAT HD 110/1VICT 4 1/2" 10M	4	10	VICT	4 1/2	127	1	1,73
9139098	CONCRETE FLAT HD 135/1VICT 5 1/2" 4M	5	4	VICT	5 1/2	148	1	2,46
9139099	CONCRETE FLAT HD 135/1VICT 5 1/2" 6M	5	6	VICT	5 1/2	148	1	2,46
9139100	CONCRETE FLAT HD 135/1VICT 5 1/2" 8M	5	8	VICT	5 1/2	148	1	2,46
9139101	CONCRETE FLAT HD 135/1VICT 5 1/2" 10M	5	10	VICT	5 1/2	148	1	2,46

REV.1.1

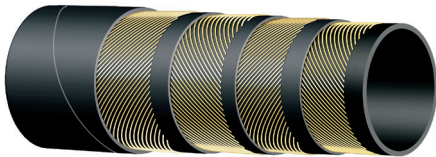
// CONCRETE HOSES

// 740AA

**Concrete pumping 100 bar (1500 psi) - Heavy duty - Steel reinforced****Tube:** black conductive NR - abrasion resistant.**Reinforcement:** high tensile steel cords.**Cover:** black conductive SBR/NR - abrasion and ozone resistant.**Application:** high pressure concrete pumping.**Temperature:** -30 °C +80 °C (-22 °F +176 °F)

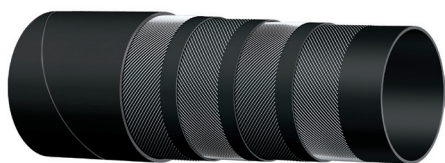
Item Code	ID (mm)	ID (in)	OD (mm)	WP (bar)	BP (bar)	BR (mm)	Weight (kg/m)	Length (m)
2006408	51,0	2"	69,0	100	200	255	2,440	20,000
2006419	76,0	3"	100,0	100	200	380	4,650	3,900
2006420	76,0	3"	100,0	100	200	380	4,650	4,900
2001927	76,0	3"	100,0	100	200	380	4,650	20,000
2015286	90,0	3 1/2"	116,0	100	200	450	5,610	3,900
2014189	102,0	4"	126,0	100	200	510	6,710	20,000
2014180	127,0	5"	153,0	100	200	635	9,970	20,000

// 741AA

**Concrete pumping 100 bar (1500 psi) - Extra service - Steel reinforced****Tube:** black conductive NR - abrasion resistant.**Reinforcement:** high tensile steel cords.**Cover:** black conductive SBR/NR - abrasion and ozone resistant.**Application:** high pressure concrete pumping. Designed for long service life in heavy duty applications.**Temperature:** -30 °C +80 °C (-22 °F +176 °F)

Item Code	ID (mm)	ID (in)	OD (mm)	WP (bar)	BP (bar)	BR (mm)	Weight (kg/m)	Length (m)
2006449	51,0	2"	69,0	100	200	255	2,420	20,000
2015637	65,0	2 9/16"	87,0	100	200	335	3,930	4,000
2015638	65,0	2 9/16"	87,0	100	200	335	3,930	5,000
2014453	65,0	2 9/16"	87,0	100	200	335	3,930	61,000
2011840	76,0	3"	128,0	100	200	380	5,090	30,500
2001932	102,0	4"	128,0	100	200	510	7,820	20,000

// 74SAA **NEW**



Concrete pumping 85 bar (1275 psi) - Heavy duty - Textile reinforced

Tube: black conductive NR - abrasion resistant.

Reinforcement: high tensile textile cords.

Cover: black conductive SBR/NR - abrasion and ozone resistant.

Application: high pressure concrete pumping. Special lightweight construction.

Temperature: -30 °C +80 °C (-22 °F +176 °F)

Item Code	ID (mm)	ID (in)	OD (mm)	WP (bar)	BP (bar)	Weight (kg/m)	Length (m)
2016888	51,0	2"	71,0	85	170	2,150	4,900
2015738	51,0	2"	71,0	85	170	2,150	30,500
2016889	65,0	2 9/16"	85,0	85	170	2,700	3,900
2016890	65,0	2 9/16"	85,0	85	170	2,700	4,900
2016754	65,0	2 9/16"	85,0	85	170	2,700	61,000
2016891	76,0	3"	101,0	85	170	3,680	2,900
2016892	76,0	3"	101,0	85	170	3,680	3,900
2016846	76,0	3"	101,0	85	170	3,680	4,900
2016232	76,0	3"	101,0	85	170	3,680	30,500

// 375AH



Hot water 10 bar (150 psi)

Tube: black EPDM.

Reinforcement: high tensile textile cords.

Cover: red EPDM - heat, abrasion and ozone resistant.

Application: general purpose-hot water.

Temperature: -35 °C +100 °C (-31 °F +212 °F)

Item Code	ID (mm)	ID (in)	OD (mm)	WP (bar)	BP (bar)	BR (mm)	Weight (kg/m)	Length (m)
2003773	13,0	1/2"	19,0	10	30	130	0,240	50,000
2003775	16,0	5/8"	22,0	10	30	160	0,280	50,000
2003777	19,0	3/4"	27,0	10	30	190	0,450	50,000
2003779	25,0	1"	33,0	10	30	250	0,570	50,000

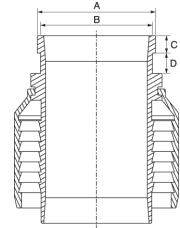
REV.1.1

// CONCRETE COUPLINGS

// IV39VL00

VICTAULIC COMPATIBLE STYLE

Hardened steel hose shank complete with pre-crimped ferrule

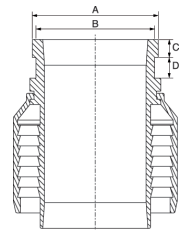


Item Code	ID (in)	Hose ID (mm)	Head DN (in)	Head DN (mm)	A (mm)	B (mm)	C (mm)	D (mm)	Hose OD Range (min) (mm)	Hose OD Range (max) (mm)
2306772	2"	51,0	2"	60,3	60	57	16	20	66,0	69,0
2307707	2"	51,0	3"	88,9	89	85	16	20	66,0	69,0
2307873	2 9/16"	65,0	3"	88,9	89	85	16	20	82,0	86,0
2301754	3"	76,0	3"	88,9	89	85	16	20	97,0	103,0
2302217	4"	102,0	4"	114,3	114	108	17	20	125,0	130,0
2302216	4"	102,0	4 1/2"	127,0	127	115	17	20	125,0	130,0
2302220	5"	127,0	5 1/2"	148,0	148	139	17	20	154,0	157,0

// IV39RL00

SHOULDERED STYLE

Hardened steel hose shank complete with pre-crimped ferrule

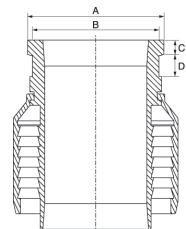


Item Code	ID (in)	Hose ID (mm)	Head DN (in)	Head DN (mm)	A (mm)	B (mm)	C (mm)	D (mm)	Hose OD Range (min) (mm)	Hose OD Range (max) (mm)
2306505	3 1/2"	90,0	4 1/2"	127,0	127	115	17	20	113,0	116,0

// IV39JL00

CALIFORNIA STYLE - HEAVY DUTY RAISED END

Hardened steel hose shank complete with pre-crimped ferrule



Item Code	ID (in)	Hose ID (mm)	Head DN (in)	Head DN (mm)	A (mm)	B (mm)	C (mm)	D (mm)	Hose OD Range (min) (mm)	Hose OD Range (max) (mm)
2303026	2"	51,0	2"	77,7	78	70	13	20	66,0	69,0

// I1Y9V-COAS

VICTAULIC COMPATIBLE STYLE

Connection Clamp - Adjustable snap lever type - Painted Steel



Item Code	DN (max) (mm)	DN (in)
2305541	89	3"
2305543	114	4"
2305544	127	4"1/2
2305546	148	5"1/2

// I1Y9V-COFX

VICTAULIC COMPATIBLE STYLE

Connection Clamp - Fixed lever type - Painted Steel



Item Code	DN (min) (mm)	DN (in)
2307587	89	3"
2307588	127	4"1/2
2307589	148	5"1/2

// ISJM9V

VICTAULIC COMPATIBLE STYLE

Profiled seal for connection clamp - SBR



Item Code	DN (mm)	Technical Note
2307373	89	DN3" SOFT
2305547	114	DN4"SOFT
2305548	127	DN4"1/2 SOFT
2305550	148	DN5"1/2 SOFT

REV.1.1

// I1Y9J-COFX

CALIFORNIA STYLE - HEAVY DUTY RAISED END
Connection clamp - Fixed lever type - Painted Steel



Item Code	DN (min) (mm)	DN (in)
2307702	78	2"

Clamp complete with seal

// ISJM9J

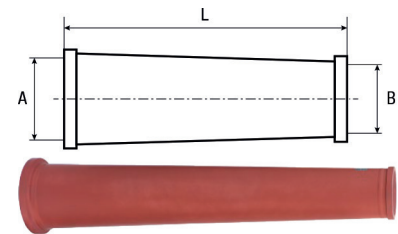
CALIFORNIA STYLE - HEAVY DUTY RAISED END
Profiled seal for connection clamp - SBR



Item Code	DN (mm)	Technical Note
2307703	78	DN2"

// I1A9V19V

VICTAULIC COMPATIBLE STYLE
Reducer pipe - Painted steel



Item Code	Thread Type 1	DN Head 1 (in)	DN Head 1 (mm)	Thread Type 2	DN Head 2 (in)	DN Head 2 (mm)	A (mm)	B (mm)	L (mm)
2307595	VICT	3"	89	VICT	3"	89	75	50	500,0
2307596	VICT	3"	89	VICT	3"	89	75	65	500,0
2307594	VICT	4 1/2"	127	VICT	3"	89	100	65	500,0
2307593	VICT	4 1/2"	127	VICT	3"	89	100	75	500,0
2307592	VICT	5 1/2"	148	VICT	3"	89	125	75	1000,0
2307590	VICT	5 1/2"	148	VICT	4 1/2"	127	125	100	500,0
2307591	VICT	5 1/2"	148	VICT	4 1/2"	127	125	100	2000,0

// IAY-BALL-S

CONCRETE COUPLING - ACCESSORY

Cleaning soft ball - Sponge



Item Code	DN (min) (mm)
2305551	60
2305552	80
2305553	100
2305554	125
2305555	150
2305556	200

// IAY-BALL-M

CONCRETE COUPLING - ACCESSORY

Cleaning ball - medium - Sponge



Item Code	DN (min) (mm)
2308442	60

REV.1.1

// MORTAR HOSES

// 757AA

**Plaster 40 bar (600 psi)****Tube:** black conductive NR - abrasion resistant.**Reinforcement:** high tensile textile cords.**Cover:** black SBR/NR - abrasion and ozone resistant - pin pricked.**Application:** plaster pumping.**Temperature:** -30 °C +80 °C (-22 °F +176 °F)

Item Code	ID (mm)	ID (in)	OD (mm)	WP (bar)	BP (bar)	Weight (kg/m)	Length (m)
2015461	19,0	3/4"	32,0	40	100	0,600	61,000
2001943	25,0	1"	38,0	40	100	0,730	40,000
2004809	25,0	1"	38,0	40	100	0,730	61,000
2001944	32,0	1 1/4"	46,0	40	100	0,910	40,000
2004700	32,0	1 1/4"	46,0	40	100	0,910	61,000
2001945	35,0	1 3/8"	49,0	40	100	1,000	40,000
2001946	38,0	1 1/2"	54,0	40	100	1,250	40,000
2001947	51,0	2"	67,0	40	100	1,680	40,000

// MORTAR COUPLINGS

// I978C1IP

MORTAR

System 22 - Male adapter - Serrated hose shank with collar - full flow bore - Malleable iron



Item Code	ID (in)	Hose ID (mm)	Head DN (mm)
2305260	1"	25,0	41,0
2305706	1 3/8"	35,0	49,5
2305147	1 1/2"	38,0	49,5
2304631	2"	50,0	63,0

// I978C1IP1

MORTAR

System 23.5 - Male adapter - Serrated hose shank with collar - full flow bore - Malleable iron



Item Code	ID (in)	Hose ID (mm)	Head DN (mm)
2307841	1"	25,0	63,0
2307842	1 3/8"	35,0	63,0
2307843	1 5/8"	42,0	63,0
2308170	2"	50,0	63,0

// I978C2IP

MORTAR

System 22 - Female coupler complete with seal - Serrated hose shank with collar - full flow bore - Malleable iron



Item Code	ID (in)	Hose ID (mm)	Head DN (mm)
2305261	1"	25,0	42,0
2305149	1 3/8"	35,0	51,0
2305150	1 1/2"	38,0	51,0
2304634	2"	50,0	64,0

REV.1.1

// I970618C

MORTAR**BSPP Male - Serrated hose shank with collar - full flow bore -
Malleable iron**

Item Code	ID (in)	Hose ID (mm)	Thread Type	Thread (in)
2305262	1"	25,0	BSPP	1"
2305152	1 3/8"	35,0	BSPP	1"1/4
2305153	1 3/8"	35,0	BSPP	2"
2305677	1 1/2"	38,0	BSPP	1"1/4
2305678	1 5/8"	42,0	BSPP	1"1/2
2305154	1 5/8"	42,0	BSPP	2"
2304635	2"	50,0	BSPP	2"

// I938C100

MORTAR**System 22 - Male adapter - Hose shank - Malleable iron**

Item Code	ID (in)	Hose ID (mm)	Head DN (mm)
2302084	1"	25,0	35,0
2301758	1"	25,0	41,0
2302086	1 3/8"	35,0	49,5
2307098	1 1/2"	38,0	49,5
2302088	2"	51,0	63,0

// I938C200

MORTAR**System 22 - Female coupler complete with seal - Hose shank -
Malleable iron**

Item Code	ID (in)	Hose ID (mm)	Head DN (mm)
2302092	1"	25,0	35,5
2302093	1"	25,0	42,0
2302094	1 3/8"	35,0	51,0
2302819	1 3/8"	35,0	64,0
2302095	2"	51,0	64,0

// I1306100

MORTAR

BSPP Male - Hose shank - Plated steel



Item Code	ID (in)	Hose ID (mm)	Thread Type	Thread (in)
2302310	1"	25,0	BSPP	1"
2302311	1 3/8"	35,0	BSPP	1"1/4
2302083	2"	51,0	BSPP	2"

// I107U-PH

I107U-PH

Serrated ferrule - Plated steel

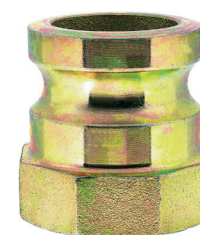


Item Code	ID (in)	Hose ID (mm)	Ferrule ID (mm)	Ferrule OD (mm)	L (mm)	Hose OD Range (min) (mm)	Hose OD Range (max) (mm)
2304505	1"	25,0	41,0	50,0	50,0	39,0	39,0
2304501	1 3/8"	35,0	49,0	58,0	55,0	49,0	49,0
2304502	1 1/2"	38,0	53,0	61,0	55,0	52,0	52,0
2305894	1 5/8"	42,0	56,0	65,0	55,0	56,0	56,0
2304542	2"	50,0	68,5	75,0	60,0	68,0	68,0

// I9A8C606

MORTAR

System 22 - Male adapter - BSPP Female - Malleable iron



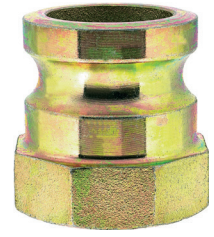
Item Code	DN Head 1 (mm)	Thread Type 2	DN Head 2 (in)
2305699	35	BSPP	1"
2305701	41	BSPP	1"
2305700	50	BSPP	1"
2305704	50	BSPP	1 1/4"
2305702	50	BSPP	1 1/2"
2305703	63	BSPP	2"

REV.1.1

// I9A8C6061

MORTAR

System 23.5 - Male adapter - BSPP Female - Malleable iron



Item Code	DN Head 1 (mm)	Thread Type 2	DN Head 2 (in)
2301553	50	BSPP	1 1/4"
2300345	63	BSPP	2"

// I9A8C806

MORTAR

System 22 - Female coupler complete with seal - BSPP Female - Malleable iron



Item Code	DN Head 1 (mm)	Thread Type 2	DN Head 2 (in)
2305668	36	BSPP	1"
2305670	42	BSPP	1"
2305669	51	BSPP	1"
2305672	51	BSPP	1 1/4"
2304633	51	BSPP	1 1/2"
2305671	64	BSPP	2"

// I9A8C8061

MORTAR

System 23.5 - Female coupler complete with seal - BSPP Female - Malleable iron



Item Code	DN Head 1 (mm)	Thread Type 2	DN Head 2 (in)
2301405	51	BSPP	1 1/4"
2300346	64	BSPP	2"

// I9A8C58C

MORTAR

System 22 - Reducing Male adapter - Male adapter - Malleable iron



Item Code	DN Head 1 (mm)	Thread Type 2	DN Head 2 (mm)
2305892	50	MORTAR	35
2305893	50	MORTAR	41

// DUNLOP HIFLEX SCANDINAVIA

// SWEDEN

**HEADQUARTER
DUNLOP HIFLEX AB**
Seldonsvägen 2, Halmstad
+46 (0)104 14 44 00
info@dunlophiflex.se

BORLÄNGE
+46 (0)104 14 46 00
borlange@dunlophiflex.se

GÖTEBORG
+46 (0)104 14 45 40
goteborg@dunlophiflex.se

HALMSTAD
+46 (0)104 14 44 04
halmstad@dunlophiflex.se

HELSINGBORG
helsingborg@dunlophiflex.se
+46 (0)104 14 45 60

LJUNGBY
+46 (0)104 14 45 20
ljungby@dunlophiflex.se

MALMÖ
+46 (0)104 14 45 00
malmo@dunlophiflex.se

NORRKÖPING
+46 (0)104 14 45 70
norrkoping@dunlophiflex.se

STOCKHOLM JÄRFÄLLA
+46 (0)104 14 45 80
stockholm@dunlophiflex.se

STOCKHOLM KUNGENS KURVA
+46 (0)104 14 45 90
kungenskurva@dunlophiflex.se

UMEÅ
+46 (0)104 14 45 30
umea@dunlophiflex.se

VÄXJÖ
+46 (0)104 14 45 10
vaxjo@dunlophiflex.se

ÖREBRO
+46 (0)104 14 45 50
orebro@dunlophiflex.se

// NORWAY

**HEADQUARTER
DUNLOP HIFLEX AS**
Jogstadsveien 39, Kjeller
+47 23 00 47 00
info@dunlophiflex.no

BERGEN
+47 23 00 47 70
bergen@dunlophiflex.no

HARSTAD
+47 23 00 48 10
harstad@dunlophiflex.no

KRISTIANSAND
+47 23 00 47 50
kristiansand@dunlophiflex.no

KJELLER
+47 23 00 47 00
oslo@dunlophiflex.no

STAVANGER
+47 23 00 47 60
stavanger@dunlophiflex.no

SARPSBORG
+47 23 00 48 30
sarpborg@dunlophiflex.no

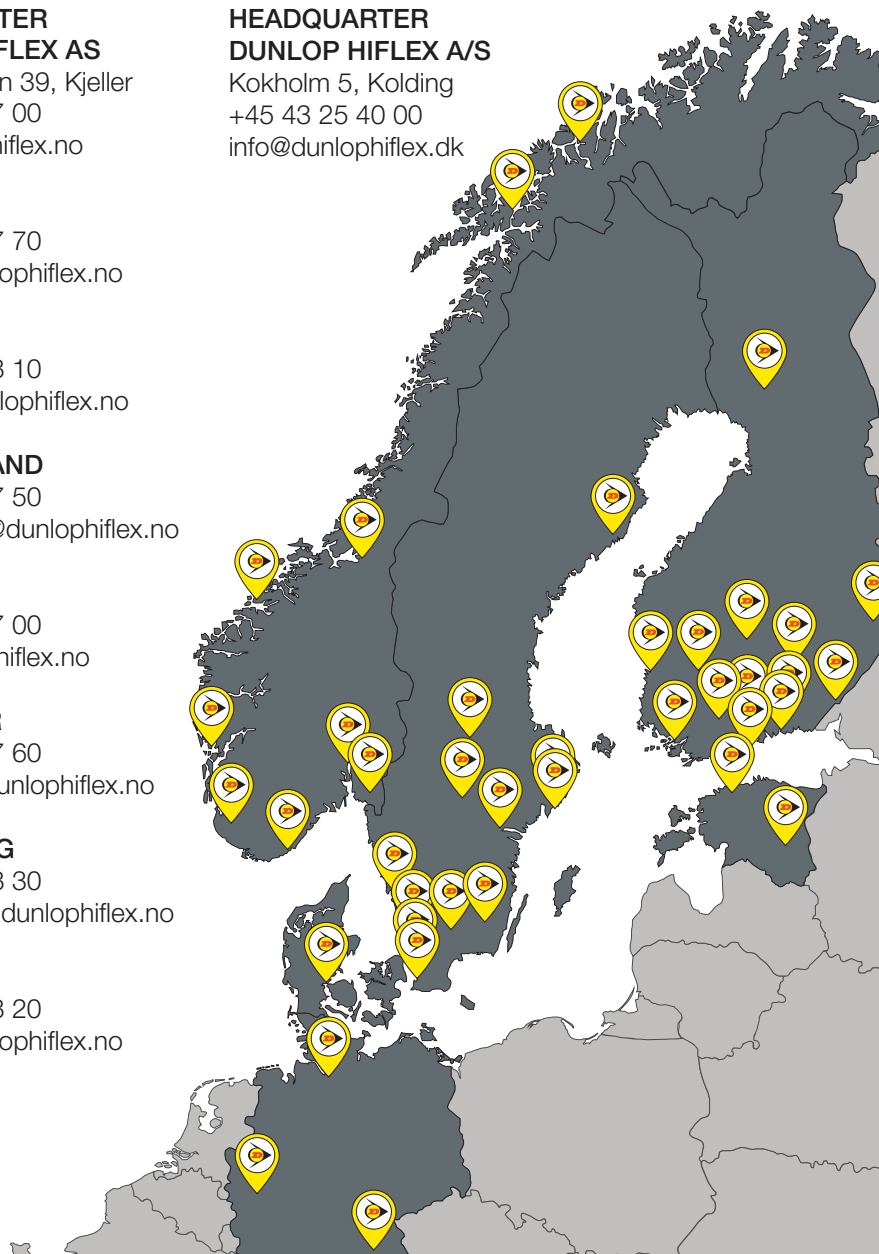
TROMSØ
+47 23 00 48 20
tromso@dunlophiflex.no

TRONDHEIM
+47 23 00 48 00
trondheim@dunlophiflex.no

ÅLESUND
+47 23 00 47 80
alesund@dunlophiflex.no

// DENMARK

**HEADQUARTER
DUNLOP HIFLEX A/S**
Kokholm 5, Kolding
+45 43 25 40 00
info@dunlophiflex.dk



**HEADQUARTER
Dunlop Hiflex AB**
Seldonsvägen 2
301 62 Halmstad - Sweden
Tel +46 (0) 10 414 44 00 - info@dunlophiflex.se
www.dunlophiflex.se