



DATA CENTRE LIQUID COOLING SOLUTIONS



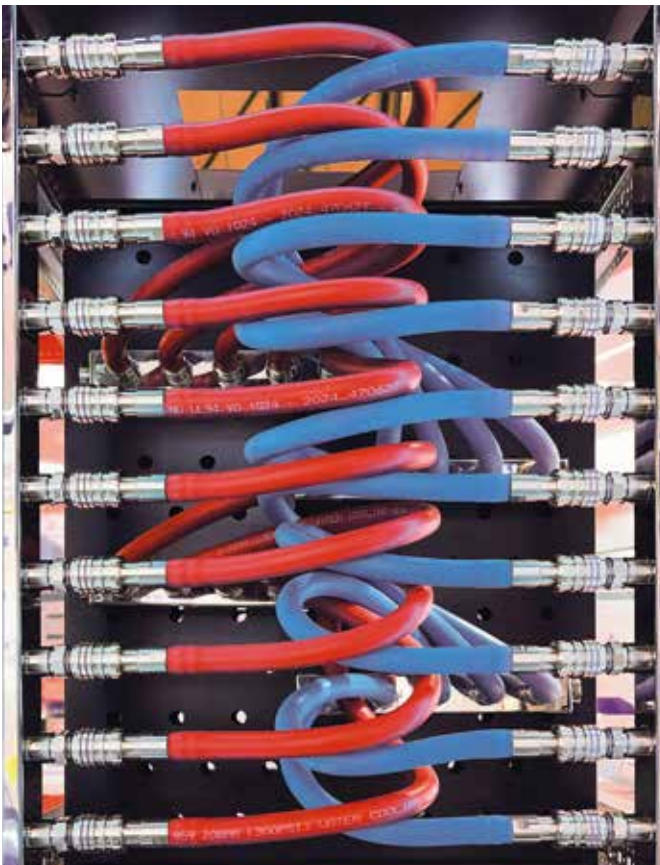
// LIQUID COOLING SOLUTIONS FOR DATA CENTRES

Alfagomma offers a comprehensive range of high-performance products for Direct Liquid Cooling (DLC) application, specifically engineered to meet the demanding requirements of modern data centres.

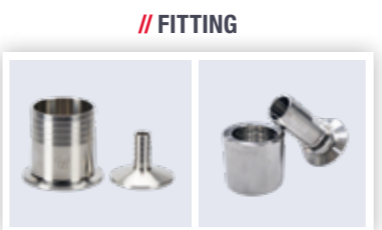
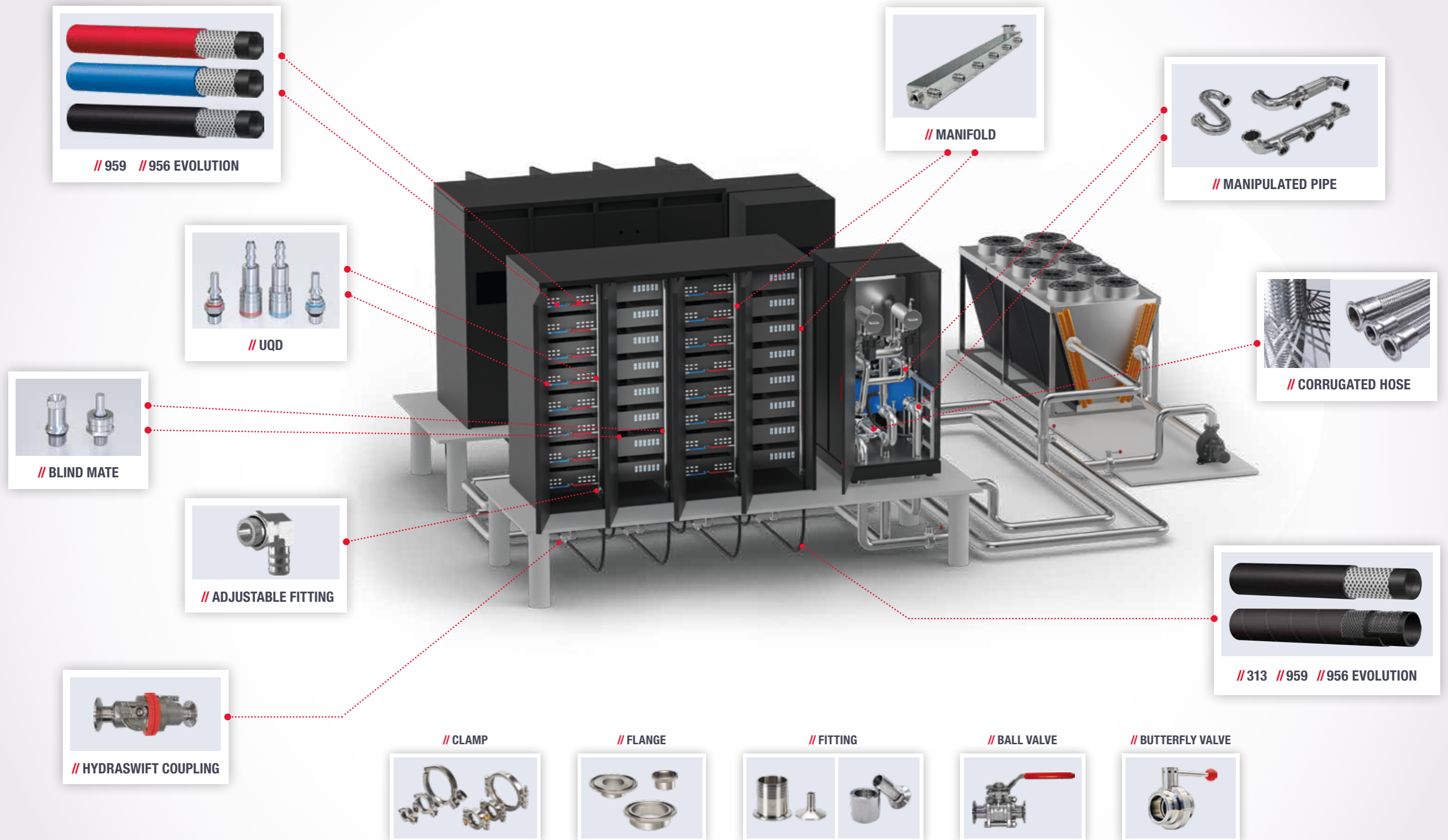
Alfagomma solutions include **rubber hoses and assemblies**, **universal quick disconnect couplings**, **manifolds**, **stainless steel rigid pipes** & **wire braided corrugated flexible hose assemblies**, and **accessories**.

Designed for use in both **primary** and **secondary loop cooling systems**.

As data centres increasingly adopt energy-efficient and sustainable cooling technologies, **Alfagomma's solutions** play a vital role in **maintaining optimal temperatures**, **improving operational stability**, **security** and **reliability** across critical infrastructure.



// DATA CENTRE LIQUID COOLING SOLUTIONS



// EPDM HOSE

Alfagomma **rubber hose** cooling range is designed to **guarantee long service life, high safety,** and **ease of use** in **data center applications.**

FEATURES

- ▲ The TOP series grants:
 - Peroxide cured, Calcium and Zinc free EPDM tube, ensuring high purity of the cooling solutions
 - UL 94 V0 flame resistant cover for maximum reliability
- ▲ The **braided or hard wall constructions** provide **superior kink** and **tight bend radius resistance** for **easy installation** and **replacement.**

// 959 EVOLUTION **NEW**



EXTRUDED
TUBE

★
TOP

Liquid cooling 16 bar (240 psi) - EPDM UL 94 V0

Tube: black peroxide cured EPDM, calcium and zinc free.

Reinforcement: high tensile textile braids.

Cover: black/red/blue EPDM - abrasion, ozone and UL94 V0 flame resistant.

ID ≤ 25mm smooth finish, ID > 25mm wrapped.

Application: data center liquid cooling.

Compatible with push-on fittings.

Temperature: -40 °C +120 °C (-40 °F +248 °F)

ID (mm)	ID (in)	OD (mm)	OD (in)	WP (bar)	WP (psi)	BP (bar)	BP (psi)	BR (mm)	BR (in)	Weight (kg/m)	Weight (lb/ft)
5,0	3/16"	11,0	0,43	16	240	64	960	20	0,79	0,100	0,07
6,0	1/4"	13,0	0,51	16	240	64	960	24	0,94	0,140	0,10
10,0	3/8"	17,0	0,67	16	240	64	960	40	1,57	0,250	0,17
13,0	1/2"	22,0	0,87	16	240	64	960	52	2,05	0,320	0,22
16,0	5/8"	25,0	0,98	16	240	64	960	64	2,52	0,390	0,27
19,0	3/4"	29,0	1,14	16	240	64	960	76	2,99	0,500	0,34
25,0	1"	36,0	1,42	16	240	64	960	100	3,94	0,690	0,47
32,0	1 1/4"	45,0	1,77	16	240	64	960	128	5,04	1,020	0,69
38,0	1 1/2"	51,0	2,01	16	240	64	960	152	5,98	1,190	0,80
51,0	2"	65,0	2,56	16	240	64	960	204	8,03	1,670	1,13

// 313AA EVOLUTION **NEW**



Liquid cooling 10 bar (150 psi) - EPDM - Hard wall

UL 94 V0

Tube: black peroxide cured EPDM, calcium and zinc free.

Reinforcement: high tensile textile cords with embedded steel helix wire.

Cover: black EPDM - abrasion, ozone and UL94 V0 flame resistant.

Application: Liquid cooling in applications where tight bend radius is required.

Temperature: -40 °C +120 °C (-40 °F +248 °F)

ID (mm)	ID (in)	OD (mm)	OD (in)	WP (bar)	WP (psi)	BP (bar)	BP (psi)	BR (mm)	BR (in)	Vacuum %	Weight (kg/m)	Weight (lb/ft)
25,0	1"	36,0	1,42	10	150	40	600	50	1,97	100,00	0,780	0,53
32,0	1 1/4"	44,0	1,73	10	150	40	600	64	2,52	100,00	1,010	0,68
38,0	1 1/2"	50,0	1,97	10	150	40	600	76	2,99	100,00	1,180	0,80
51,0	2"	64,0	2,52	10	150	40	600	102	4,02	100,00	1,750	1,18

// 956 EVOLUTION **NEW**



General purpose 20 bar (300 psi) - EPDM

Tube: black conductive EPDM.

Reinforcement: high tensile textile braid up to ID 25mm - ID>25mm spiralled.

Cover: black/red/blue EPDM - abrasion and ozone resistant. ID≤ 25mm smooth finish, ID>25mm wrapped.

Application: air, water and mild chemicals delivery in general industrial applications.

Also suitable for cooling systems.

Temperature: -40 °C +120 °C (-40 °F +248 °F)

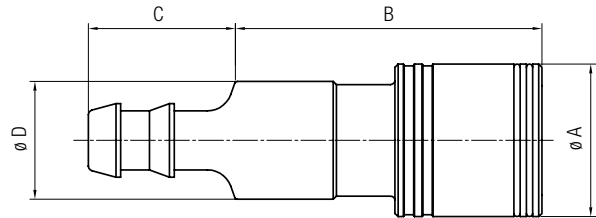
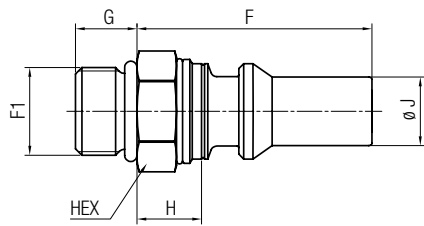
ID (mm)	ID (in)	OD (mm)	OD (in)	WP (bar)	WP (psi)	BP (bar)	BP (psi)	BR (mm)	BR (in)	Weight (kg/m)	Weight (lb/ft)
6,0	1/4"	13,0	0,51	20	300	80	1200	36	1,42	0,120	0,09
8,0	5/16"	15,0	0,59	20	300	80	1200	48	1,89	0,150	0,11
10,0	3/8"	17,0	0,67	20	300	80	1200	60	2,36	0,190	0,13
13,0	1/2"	21,0	0,83	20	300	80	1200	78	3,07	0,270	0,19
16,0	5/8"	25,0	0,98	20	300	80	1200	96	3,78	0,340	0,23
19,0	3/4"	28,0	1,10	20	300	80	1200	114	4,49	0,400	0,27
25,0	1"	35,0	1,38	20	300	80	1200	150	5,91	0,560	0,38
32,0	1 1/4"	44,0	1,73	20	300	60	900	192	7,56	0,760	0,52
38,0	1 1/2"	50,0	1,97	20	300	60	900	228	8,98	0,880	0,60
51,0	2"	64,0	2,52	20	300	60	900	306	12,05	1,230	0,83

// COUPLINGS

The Alfagomma quick-connect coupling series is an **essential component for liquid cooling systems in data centres**. With a focus on **secure and easy connections, leak-proof design, high flow rates, and resistance to mechanical stresses**, it is tailored to meet the rigorous demands of data centre liquid cooling. **UQD blind-mate and adjustable fittings** complete the offering.

FEATURES

- ▲ Stainless steel
- ▲ EPDM seal material
- ▲ 100% helium leak tested
- ▲ Color coding available
- ▲ Sizes: 1/4" to 2"
- ▲ Customisable solutions



UNIVERSAL QUICK DISCONNECT

Male ORB ISO 11926-3



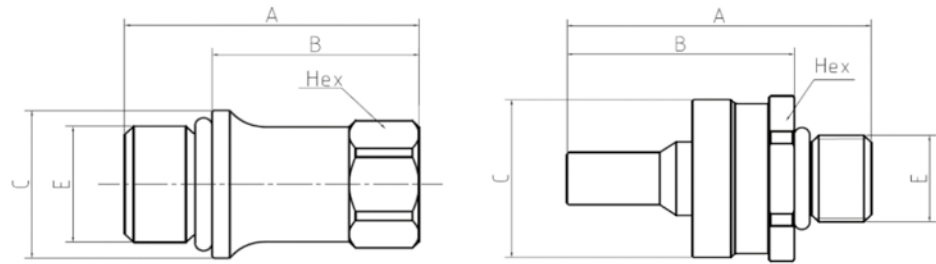
Item	Thread F1 (in)	F (mm)	F (in)	G (mm)	G (in)	H (mm)	H (in)	J (mm)	J (in)	HEX (mm)	HEX (in)
UQD02	7/16-20"	29,2	1,15	9,1	0,36	8,7	0,34	6,65	0,26	14,0	0,55
UQD04	9/16-18"	38,0	1,50	9,9	0,39	9,8	0,39	11,00	0,43	17,0	0,67
UQD06	3/4-16"	41,5	1,63	11,0	0,43	10,2	0,40	14,30	0,56	22,0	0,87
UQD08	7/8-14"	47,6	1,87	12,7	0,50	12,0	0,47	17,50	0,69	27,0	1,06

UNIVERSAL QUICK DISCONNECT

Push-on Female



Item	End size / Hose Tail (in)	A (mm)	A (in)	B (mm)	B (in)	C (mm)	C (in)	D (mm)	D (in)
UQD02	1/4"	18,5	0,73	38,5	1,52	19,0	0,75	14,0	0,55
UQD04	3/8"	24,5	0,96	49,5	1,95	23,7	0,93	19,0	0,75
UQD06	1/2"	28,0	1,10	52,0	2,05	25,8	1,02	23,0	0,91
UQD08	5/8"	31,8	1,25	60,6	2,39	38,5	1,52	27,5	1,08



BLIND MATE

Socket



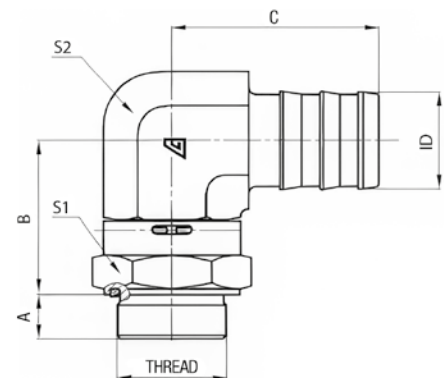
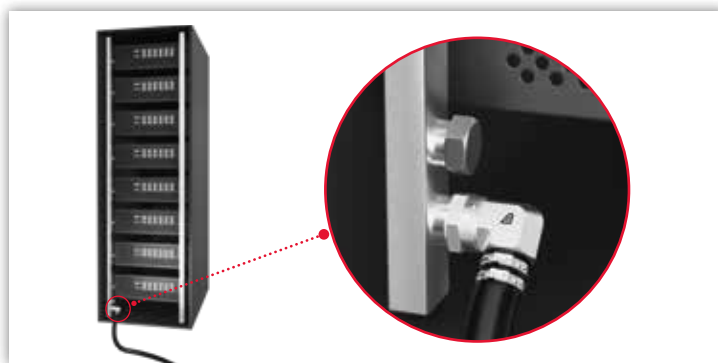
Item	Thread F1 (in)	A (mm)	A (in)	B (mm)	B (in)	C (mm)	C (in)	Hex (mm)	Hex (in)	E2E length (mm)
UQDB02	9/16"-18	33,6	1,32	23,6	0,93	18,0	0,71	14,0	0,55	35,8-37,2
UQDB04	3/4"-16	39,5	1,56	28,5	1,12	22,5	0,89	19,0	0,75	44,0-45,4
UQDB06	7/8"-14	44,5	1,75	31,8	1,25	27,4	1,08	24,0	0,94	47,5-48,9
UQDB08	1-1/16"-12	50,5	1,99	35,4	1,39	31,4	1,24	27,0	1,06	51,8-53,4

BLIND MATE

Plug ORB ISO 11926-3



Item	Thread F1 (in)	A (mm)	A (in)	B (mm)	B (in)	C (mm)	C (in)	J (mm)	J (in)	Hex (mm)	Hex (in)	E2E length (mm)
UQDB02	7/16"-20"	36,0	1,42	27,0	1,06	20,0	0,79	6,65	0,26	19,0	0,75	35,8-37,2
UQDB04	9/16"-18"	45,3	1,78	35,4	1,39	25,0	0,98	11,00	0,43	22,0	0,87	44,0-45,4
UQDB06	3/4"-16"	50,0	1,97	38,9	1,53	28,3	1,11	14,30	0,56	27,0	1,06	47,5-48,9
UQDB08	7/8"-14"	55,6	2,19	42,9	1,69	29,5	1,16	17,50	0,69	27,0	1,06	51,8-53,4



ADJUSTABLE FITTING

Port type ISO 1179-1



Item	Hose ID	End Thread & Type	A (mm)	A (in)	B (mm)	B (in)	C (mm)	C (in)	S1 (mm)	S1 (in)	S2 (mm)	S2 (in)
AF-16	1"	G1 -11 ISO1179-2 BSPP	18,0	0,71	60,8	2,93	55,7	2,19	41,0	1,61	41,0	1,61
AF-24	1 1/2"	G1.1/4 -11 ISO1179-2 BSPP	20,0	0,79	84,5	3,33	104,0	4,09	70,7	2,76	65,0	2,56
AF-32	2"	G2 -11 ISO1179-2 BSPP	24,0	0,94	84,5	3,33	113,0	4,45	75,0	2,95	65,0	2,56

// STAINLESS STEEL RIGID PIPES & CORRUGATED HOSE ASSEMBLIES

Alfagomma **designs, manufactures,** and distributes **stainless steel rigid pipes and wire braided corrugated flexible hose assemblies for cooling applications in data centres.**

Through continuous research and development, as well as technical and production expertise, Alfagomma customises products to meet **customers' specifications and requirements.**



// ACCESSORIES

Alfagomma is a **trusted single-source supplier** of **complete Direct Liquid Cooling systems**. In addition to advanced hose, coupling, and pipe solutions, the **offering includes all complementary components** – clamps, valves, manifolds, flanges, and fittings – engineered for seamless integration.

This all-in-one approach **ensures streamlined procurement, full compatibility, and consistent system performance.**



THE ALFAGOMMA GROUP

ALFAGOMMA

ARGENTINA – Buenos Aires
Moreno Store Center
Belisario Roldán 2616 - CP. 1744
La Reja - Bs. As.
+54 (11) 5365-6062/6063

AUSTRALIA – Sydney
50 Honeycomb Drive
Eastern Creek
Sydney, NSW 2766
+61 (2) 98 53 09 00
sydney@alfagomma.com.au

BELGIUM & NETHERLANDS – Benelux
Z5 Mollem 340
1730 Asse – Mollem
+32 (2) 209 27 40
info.benelux@alfagomma.com

BRAZIL – Guaraniésia
Rua Felice Gennasio 401
Distrito Indl. Dr. Firmino Rocha de Freitas
37810-000 - Guaraniésia, MG - Brasil
+55 (35) 35 55 0408
contato@alfagomma.com.br

CANADA – Montreal
6550 Abrams
St. Laurent, Montreal
Quebec H4S 1Y2
+1 (514) 33 35 577
info@alfagomma.ca

CHINA – Ningbo
No. 1 Cidong South Avenue
Coastal Economic Development Zone
Cixi, Zhejiang, China 315311
+86 (574) 88 15 72 88
alfagomma.china@alfagomma.com.cn

FRANCE – Villepinte
Le Sisley – Parc d'activité Paris Nord 2
23 Allée des Impressionnistes
93420 Villepinte
+33 (1) 48172121
agfrance.info@alfagomma.com

GERMANY – Herne
Friedrich der Grosse 10
44628 Herne
+49 (2323) 14 730
info.germany@alfagomma.com

GREECE – Athens
85 Kifissou Avenue
12241 Aigaleo, Athens
+30 (210) 41 19 909
info.hellas@alfagomma.com

INDONESIA – Tangerang
Jalan Raya Serang km. 16
Sukamulya Cikupa
Tangerang Banten 15710
+62 (21) 59 66 4792
jakarta@alfagomma.co.id

ITALY – Vimercate
Via Torri Bianche 1
20871 Vimercate (MB)
+39 (039) 60 161
info@alfagomma.com

MALAYSIA – Pasir Gudang
Plo 405, Jalan Perak 4
81707 Pasir Gudang
Negeri Johor Darul Takzim
+60 (7) 25 72 000
alfagomma@alfagomma.com.my

MEXICO – Torreón
Av. Industria de la transformacion
Parque Pymes 585
27400 Torreón, Coahuila
+52 8713125026
alfagomma.mexico@alfagomma.com

SINGAPORE
14 Tuas Ave 11
Singapore 639080
+65 6360 9000
alfagomma@alfagomma.com.sg

SOUTH AFRICA – Johannesburg
17 Quark Crescent Linbro Business Park
Sandton 2065
+27 (11) 20 10 900
alfagomma@alfagomma.co.za

SOUTH KOREA – Hwasung
15 Julteo Gil
Yangkam-Myun, Hwasung-Si
Kyungki-Do 18630
+82 (31) 35 28 671
alfagomma@alfagomma.co.kr

THAILAND – Bangkok
60/21 Moo.4 King Kaew Road
Racha Thewa SubDistrict, Bang Phli District
Samut Prakan Province, 10540
+66 (0) 2 136 2388
sales@alfagomma.co.th

UNITED KINGDOM – Haydock
43 Wilcock Road
Old Boston Trading Estate Haydock
St. Helens WA11 9TG
+44 (1942) 40 76 80
haydock.sales@alfagomma.com

UNITED STATES OF AMERICA – Burlington
3520 West Avenue
IA 52601 Burlington
+1 (319) 75 89 224
info@alfagomma.us

DUNLOPHIFLEX

DENMARK – Kolding
Kokbjerg 1A
6000 Kolding
+45 43 25 40 00
kundeservice@dunlophiflex.dk

ESTONIA – Tallin
Läike tee 32/1 - Peetri alevik,
Rae vald - 75312 Harjumaa (Tallinn)
+372 (0) 605 4900
tallinn@dunlophiflex.ee

FINLAND – Pirkkala
Jasperintie 320
33960 Pirkkala
+358 (207) 625 700
info@dunlophiflex.fi

NORWAY – Kristiansand
Buråsen 7
4636 Kristiansand
+47 23 00 47 00
sales@dunlophiflex.no

SWEDEN – Halmstad
Kistinge Industriområde
Seldonsvägen 2
302 62 Halmstad
+46 (0)10-414 44 00
info@dunlophiflex.se

ARGUS

GERMANY – Ettlingen
Pforzheimer Str. 126
76275 Ettlingen
+49 (7243) 50 550
info@argus-fluidtechnik.de

UNITED KINGDOM – Salisbury
Telford Road
Salisbury, Wiltshire SP2 7PH
+44 (1722) 42 05 90
sales@hiflex-europe.com

KIOWA

UNITED KINGDOM – Sleaford
Kiowa Ltd, The Reservation, East Road
Sleaford, Lincolnshire, NG34 7BY
+44 (0) 1529 416200
sales@kiowa.co.uk



HEADQUARTERS
Alfagomma SpA
Via Torri Bianche 1
20871 Vimercate (MB) Italy
marketing@alfagomma.com
www.alfagomma.com