

# HYDRAULIC COMPONENTS







---

Dunlop Hiflex is one of the market's most established suppliers of hydraulic fluid conveyance and industrial fluid conveyance products and systems.

The manufacturing of hoses and couplings, for both high and low pressure, gives Dunlop Hiflex extensive knowledge of the products and enables us to put forward suggestions for new solutions and improvements for the industry.



# // DUNLOP HIFLEX

## // THE FIRST HOSES

**Scotland, 1887.** John Boyd Dunlop, a Scottish born inventive veterinarian observes his son as he's cycling down a bumpy road. The bike has hard solid rubber tyres and the ride is rough and shaky. The ride is neither fast nor particularly comfortable. He then comes up with an idea of wrapping an air filled rubber hose around the rim. In 1888 he patented the idea and the rest as we say, is history.



## // A PRODUCT THAT CHANGED THE WORLD

John Dunlop's idea about air-filled rubber hoses was the beginning of an industrial manufacturing of air-filled tires and, later, a development of hydraulic and industrial hoses.

We, at Dunlop Hiflex, **are specialists at hoses for high and low pressure** and through our unique position with **manufacturing** in our own factories, in **Halmstad, Kolding, Bergen, Kristiansand, Stavanger** and **Pirkkala**, we are leading the development of the **next generation of top-quality hoses**. Moreover, our widespread branch network throughout the Nordic Countries and Germany provides customers with an excellent service.

Today we are a part of the Alfacomma Group, one of the leading manufactures of hoses in the world. But we still carry the name that originated from a Scot and bike with pride.

**6**

PLANTS

**39**

STORES

**121**

DISTRIBUTORS

**FINLAND**

Hämeenlinna  
Imatra  
Joensuu  
Jyväskylä  
Kotka  
Kouvola  
Lahti  
Mikkeli  
**Pirkkala**  
Pori  
Rovaniemi  
Turku  
Vantaa

**ESTONIA**

Tallinn  
Tartu

**SWEDEN**

Borlänge  
Göteborg  
**Halmstad**  
Helsingborg  
Ljungby  
Malmö  
Norrköping  
Stockholm Järfälla  
Stockholm Kungens Kurva  
Umeå  
Växjö  
Örebro

**DENMARK**

**Kolding**

**NORWAY**

**Bergen**  
Harstad  
**Kristiansand**  
Kjeller  
**Stavanger**  
Sarpsborg  
Tromsø  
Trondheim  
Ålesund

**GERMANY**

Hamburg  
Nürnberg  
Wiel

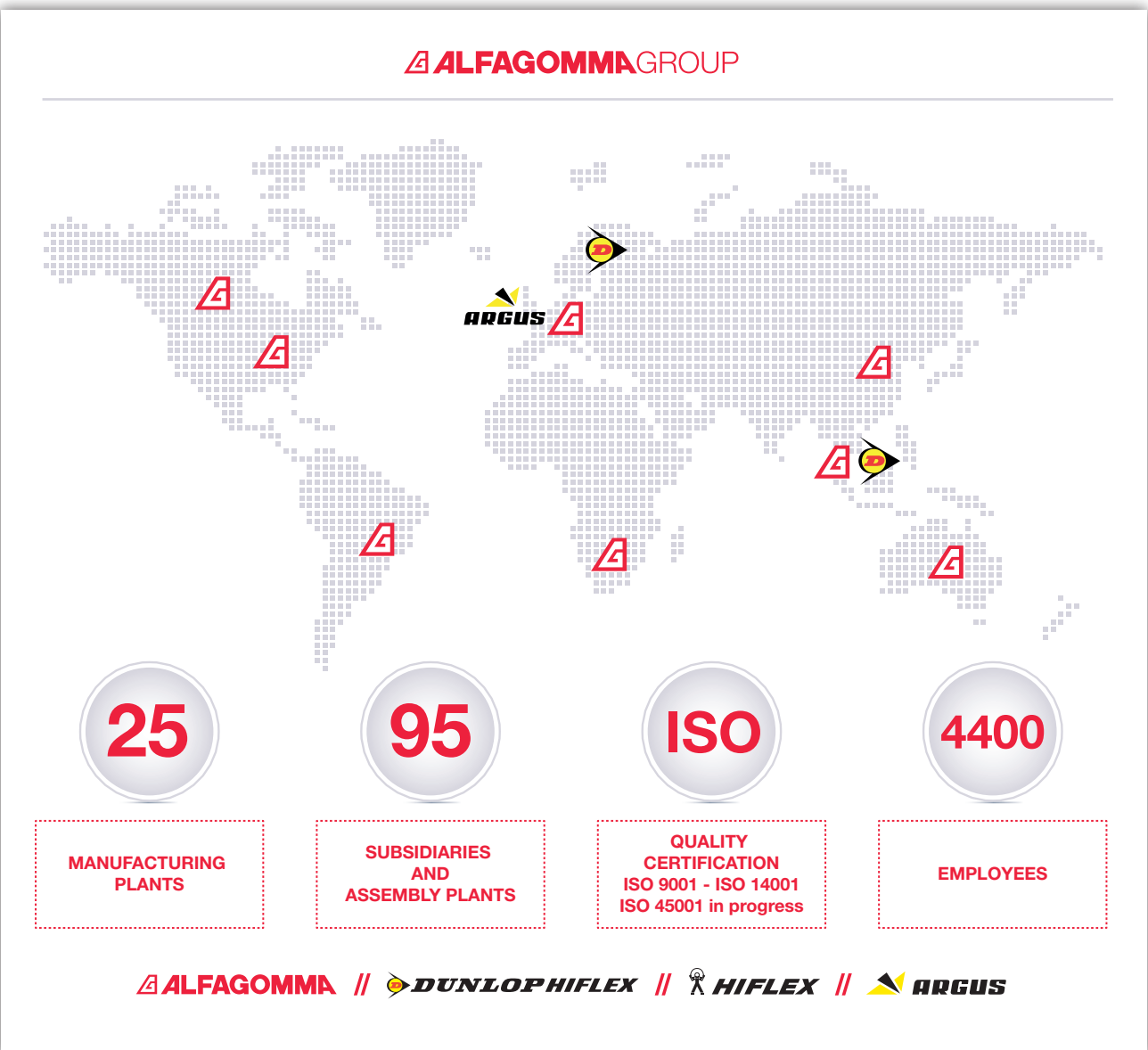


## // ALFAGOMMA GROUP

Dunlop Hiflex was acquired by Alfacomma Group in 2005. The Group, established in 1956, is a global manufacturer specialized in highly engineered, technically demanding hydraulic and industrial products, created with a commitment to excellence in quality and innovation.

## // RESEARCH AND DEVELOPMENT

Alfacomma is focused on continuous improvement, proven by its constant engineering innovation of products, processes and production excellence, which improving products performance, safety and efficiency. The company's distinguishing feature is its ability to innovate, by investing in research and development of products and materials, and designing solutions that meet customer's requirements, in compliance with international regulations.



**// INDEX**

<b>// ABOUT DUNLOP HIFLEX</b>	4
<b>// PUMPS</b>	
GEAR PUMPS	8
PISTON PUMPS OPEN LOOP	11
HANDPUMPS	16
<b>// MOTORS</b>	
GEAR MOTORS	18
ORBITAL MOTORS	20
<b>// ROTATING FLOW DEVIDERS</b>	
ROTATING FLOW DEVIDER	24
<b>// HYDRAULIC CYLINDERS</b>	
WELDED HYDRAULIC CYLINDER	25
<b>// VALVES</b>	
MONOBLOCK	28
MANUAL MONOBLOCK	30
ELECTRICAL MONOBLOCK	32
MANUAL VALVES	33
DIVERTERS	34
CETOP / NG	36
CARTRIDGE	45
INLINE	50
<b>// MANIFOLDS</b>	
CETOP / NG	57
CARTRIDGE	59
CUSTOMIZED MANIFOLDS	59
<b>// FILTERS</b>	
RETURN	60
SPIN - ON	63
PRESSURE	64
<b>// ACCUMULATORS</b>	
MEMBRANE	68
BLADDER	70
ACCESSORIES	72
<b>// RESERVOIR EQUIPMENT</b>	
BELL HOUSES	73
COUPLINGS	74
TANKS	76
ACCESSORIES	78
<b>// PRESSURE GAUGES</b>	
PRESSURE GAGUES	79
ACCESSORIES	82
PRESSURE SWITCHES	83
CONTROL & ELECTRONICS	83
PRESSURE TRANSDUCERS	84
TEMPERATURE SWITCHES	85
<b>// CONNECTORS</b>	
CONNECTORS	86
<b>// MINI POWER PACKS</b>	86



**Dunlop Hiflex Scandinavia – Part of the Alfagomma Group**  
Global leading manufacturer of hydraulic and industrial fluid conveyance products and systems.

**We have more than 25 plants worldwide manufacturing components from raw material to ready made products and solutions both for the OEM and the Aftermarket.**

**In addition we have a close network of strategic partners of premium products to be the single source solution provider for you.**

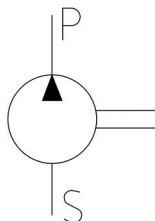
As from 2021 we have intensified our work to be the single source solution provider and added on top of this a number of global partners within the area of active components. The premium brands and products are well established and well-known in Scandinavia and with this we also secure future growth and demands from all our customers on a global perspective within and throughout the Alfagomma Group.

We have a strong organization with long experience of active components. We cannot show all products in this catalogue. If you have any requests just ask us and we help you out to find the most suitable products or solution for your application.

If you can't find your product, contact your sales representative, we stock a wider range than the existing products in this catalogue.

## // GEAR PUMPS

### // GPALU01-1 - GEAR PUMP GROUP 1



**Termination:** Flanged european standard

**Rotation:** Right hand

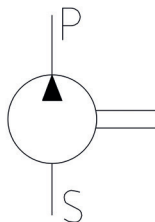
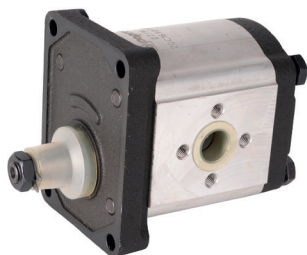
**Shaft:** Conical 1:8

**Ports:** European standard

**Material:** Aluminium

Item Code	Note	Displacement (cm <sup>3</sup> /rv)	Max Contin. Press. (bar)	Max Contin. Speed (rpm)	Fl. Bolt Inlet Diam.	Fl. Bolt Outlet Diam.
1252822	10C1X056	1,0	250	3500	30,0	30,0
1252823	10C1,25X056	1,2	250	3500	30,0	30,0
1252824	10C1,6X056	1,6	250	3500	30,0	30,0
1252825	10C2X056	2,0	250	3500	30,0	30,0
1252826	10C2,5X056	2,5	250	3500	30,0	30,0
1252827	10C3,15X056	3,1	250	3500	30,0	30,0
1252829	10C3,65X056	3,6	250	3500	30,0	30,0
1252830	10C4,2X056	4,2	250	3500	30,0	30,0
1252831	10C5X056	5,0	250	3000	30,0	30,0
1252832	10C5,7X056	5,7	200	3000	30,0	30,0
1252833	10C6,1X056	6,1	200	2500	30,0	30,0
1252834	10C7,4X056	7,4	180	2500	30,0	30,0
1252835	10C8,5X056	8,5	150	2000	30,0	30,0
1252836	10C9,8X056	9,8	120	2000	30,0	30,0

### // GPALU01-2 - GEAR PUMP GROUP 2



**Termination:** Flanged european standard

**Rotation:** Right hand

**Shaft:** Conical 1:8

**Ports:** European standard

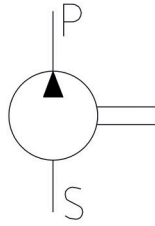
**Material:** Aluminium

Item Code	Note	Displacement (cm <sup>3</sup> /rv)	Max Contin. Press. (bar)	Max Contin. Speed (rpm)	Fl. Bolt Inlet Diam.	Fl. Bolt Outlet Diam.
1227051	20C4,5X006F	4,5	250	3500	30,0	30,0
1227055	20C6,3X006F	6,3	250	3500	30,0	30,0
1227059	20C8,2X006F	8,2	250	3500	40,0	30,0
1227063	20C10X006F	10,0	250	3500	40,0	30,0
1252837	20C11X006F	11,0	250	3500	40,0	30,0
1227067	20C12X006F	12,0	250	3500	40,0	30,0
1227071	20C14X006HF	14,0	250	3500	40,0	30,0
1252838	20C15X006HF	15,0	250	3000	40,0	30,0
1227075	20C16X006HF	16,0	250	3000	40,0	30,0
1227079	20C19X006HF	19,0	200	3000	40,0	30,0
1252839	20C22X006HF	22,0	180	2500	40,0	30,0



REV.1.1

## // GPALU01-3 - GEAR PUMP GROUP 3

**Termination:** Flanged european standard**Rotation:** Right hand**Shaft:** Conical 1:8**Ports:** European standard**Material:** Aluminium

Item Code	Note	Displacement (cm <sup>3</sup> /rv)	Max Contin. Press. (bar)	Max Contin. Speed (rpm)	Fl. Bolt Inlet Diam.	Fl. Bolt Outlet Diam.
1227087	30C20X146HF	20,0	220	3000	40,0	40,0
1227091	30C22,2X146HF	22,5	220	3000	40,0	40,0
1227095	30C25X146HF	25,0	220	3000	40,0	40,0
1227099	30C28X146H	28,0	220	3000	40,0	40,0
1227103	30C32X146HF	32,0	220	3000	51,0	40,0
1227107	30C36X146HF	36,0	220	2800	51,0	40,0
1227111	30C42X146HF	42,0	200	2500	51,0	40,0
1227115	30C46X146HF	46,0	200	2300	51,0	40,0
1227119	30C50X146HF	50,0	170	2100	51,0	40,0
1227123	30C55X146HF	55,0	170	1750	51,0	40,0
1227127	30C60X146HF	60,0	150	1750	51,0	40,0

## // MULTIPLE GEAR PUMPS

We can supply you with multiple gear pumps from our workshop.  
The sizes we got are from 1 cm<sup>3</sup> (group 1) to 50 cm<sup>3</sup> (group 3).

Our stock contains standard conical shafts and european standard flanges.



## // CONNECTIONS GEARPUMP

### // GPARPAS12 - GEAR PUMP CONNECTION

Termination: BSPP  
 Construction: 90°  
 General: Mounting screws included (3 pcs)  
 Material: Steel  
 Manufacturer: OMT



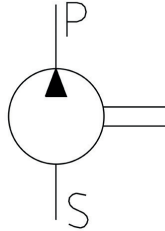
10

PUMPS

Item Code	Note	Inlet Thread Size	Fl. Bolt Outlet Diam.	Notes
1222859	RPA1-038	3/8"	30,0	M6X20
1222858	RPA1-012	1/2"	30,0	M6X20
1222860	RPA2-012	1/2"	40,0	M8X25
1222861	RPA2-034	3/4"	40,0	M8X25
1222863	RPA3-034	3/4"	51,0	M10X30
1222862	RPA3-100	1"	51,0	M10X30

REV.1.1

## // FIXED PISTON PUMPS

// PPAOLF05 - AXIAL PISTON PUMP  
OPEN LOOP - FIXED

**Construction:** Single or double piston pumps with fixed displacement

**Application:** Pumps for trucks/mobile vehicles, open loop

**Termination:** ISO/DIN PN10

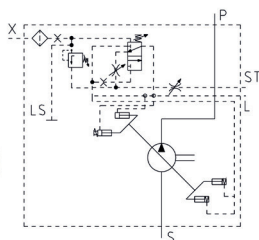
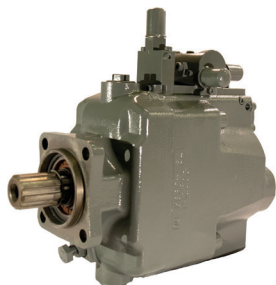
**Shaft:** Splined ISO 8X32X36 (PTO)

**Manufacturer:** Sunfab

Item Code	Note	Nom. Displ. (cm3/rev)	Nom. Displ. 2 (cm3/rev)	Max Contin. Speed (rpm)	Max Contin. Press. (bar)	Rotation
1253203	SAP-012L-N-DL4-L35-S0S-000	12,6	0,0	2300	400	Left hand
1253204	SAP-012R-N-DL4-L35-S0S-000	12,6	0,0	2300	400	Right hand
1253206	SAP-017R-N-DL4-L35-S0S-000	17,0	0,0	2300	400	Right hand
1253205	SAP-017L-N-DL4-L35-S0S-000	17,0	0,0	2300	400	Left hand
1253235	SLPD-20/20W-N-DL4-L35-S4S	20,0	20,0	2200	350	Bi-directional
1253207	SAP-025L-N-DL4-L35-S0S-000	25,4	0,0	2300	400	Left hand
1253208	SAP-025R-N-DL4-L35-S0S-000	25,4	0,0	2300	400	Right hand
1253236	SLPD-28/28W-N-DL4-L35-S4S	28,0	28,0	1800	350	Bi-directional
1253209	SAP-034L-N-DL4-L35-S0S-000	34,2	0,0	2300	400	Left hand
1253210	SAP-034R-N-DL4-L35-S0S-000	34,2	0,0	2300	400	Right hand
1253238	SLPD-35/35W-N-DL4-L35-S4S	35,0	35,0	2200	330	Bi-directional
1253237	SLPD-40/20W-N-DL4-L35-S4S	40,0	20,0	2200	350	Bi-directional
1253211	SAP-040L-N-DL4-L35-S0S-000	41,2	0,0	1900	400	Left hand
1253212	SAP-040R-N-DL4-L35-S0S-000	41,2	0,0	1900	400	Right hand
1253240	SLPD-46/46W-N-DL4-L35-S4S	46,0	46,0	1800	330	Bi-directional
1253214	SAP-047R-N-DL4-L35-S0S-000	47,1	0,0	1900	400	Right hand
1253213	SAP-047L-N-DL4-L35-S0S-000	47,1	0,0	1900	400	Left hand
1253241	SLPD-53/53W-N-DL4-L35-S4S	53,0	53,0	1600	330	Bi-directional
1253231	SCPD-56/26L-V-DL4-L35-S0S-200	56,0	26,0	1850	400	Left hand
1253215	SAP-056L-N-DL4-L35-S0S-000	56,0	0,0	1900	400	Left hand
1253216	SAP-056R-N-DL4-L35-S0S-000	56,0	0,0	1900	400	Right hand
1253239	SLPD-56/28W-N-DL4-L35-S4S	56,0	28,0	1800	350	Bi-directional
1253232	SCPD-56/26R-V-DL4-L35-S0S-200	56,0	26,0	1850	400	Right hand
1255319	SAP-064L-V-DL4-L35-S0S-000	63,6	0,0	1900	400	Left hand
1253559	SAP-064R-V-DL4-L35-S0S-000	63,6	0,0	1900	400	Right hand
1253217	SAP-064L-N-DL4-L35-S0S-000	63,6	0,0	1900	400	Left hand
1253218	SAP-064R-N-DL4-L35-S0S-000	63,6	0,0	1900	400	Right hand
1253242	SLPD-64/32W-N-DL4-L35-S4S	64,0	32,0	1600	350	Bi-directional
1253234	SCPD-76/76R-V-DL4-L35-S0S-200	76,0	76,0	1500	350	Right hand
1253233	SCPD-76/76L-V-DL4-L35-S0S-200	76,0	76,0	1500	350	Left hand
1253219	SAP-084L-N-DL4-L35-S0S-000	83,6	0,0	1600	400	Right hand
1253576	SAP-084R-V-DL4-L35-S0S-000	83,6	0,0	1600	400	Right hand
1253224	SAP-084R-V-DL4-L35-S0S-200	83,6	0,0	1800	400	Right hand
1253220	SAP-084R-N-DL4-L35-S0S-000	83,6	0,0	1600	400	Left hand
1253223	SAP-084L-V-DL4-L35-S0S-200	83,6	0,0	1800	400	Left hand
1253227	SAPT-090L-N-DL4-L35-S0S-000	90,0	0,0	1500	300	Left hand
1253228	SAPT-090R-N-DL4-L35-S0S-000	90,0	0,0	1500	300	Right hand
1253222	SAP-108R-N-DL4-L35-S0S-000	108,0	0,0	1600	400	Right hand
1253221	SAP-108L-N-DL4-L35-S0S-000	108,0	0,0	1600	400	Left hand
1253226	SAP-108R-V-DL4-L35-S0S-200	108,0	0,0	1800	400	Right hand
1253575	SAP-108R-V-DL4-L35-S0S-000	108,0	0,0	1600	400	Right hand
1253225	SAP-108L-V-DL4-L35-S0S-200	108,0	0,0	1800	400	Left hand
1253230	SAPT-130R-N-DL4-L35-S0S-000	130,0	0,0	1500	300	Right hand
1253229	SAPT-130L-N-DL4-L35-S0S-000	130,0	0,0	1500	300	Left hand

## // VARIABLE PISTON PUMPS

### // PPAOLV05 - AXIAL PISTON PUMP OPEN LOOP - VARIABLE



**Construction:** Single or double piston pumps with variable displacement. Regulator: Load-sensing, adjustable power limitation

**Application:** Pumps for trucks/mobile vehicles, open loop

**Termination:** ISO/DIN PN10

**Shaft:** Splined ISO 8X32X36 (PTO)

**Manufacturer:** Sunfab

Item Code	Note	Displacement (cm <sup>3</sup> /rv)	Max Contin. Speed (rpm)	Max Contin. Press. (bar)	Outlet Thread Size	Rotation
1253244	SVH-062LDYN-1-LSP	62,4	2500	350	3/4"	Left hand
1253243	SVH-062RDYN-1-LSP	62,4	2500	350	3/4"	Right hand
1253246	SVH-092LDYN-1-LSP	87,2	2300	350	1"	Left hand
1253245	SVH-092RDYN-1-LSP	87,2	2300	350	1"	Right hand
1253248	SVH-112LDYN-1-LSP	110,4	2200	350	1"	Left hand
1253247	SVH-112RDYN-1-LSP	110,4	2200	350	1"	Right hand
1253250	SVH-130LDYN-1-LSP	130,0	2100	400	1"	Left hand
1253249	SVH-130RDYN-1-LSP	130,0	2100	400	1"	Right hand

REV.1.1

## // CONNECTIONS PISTON PUMP

## // PPAACC05 - PISTON PUMP AXIAL CONNECTIONS SIZE S



**Application:** Suction connections for truck pumps, fixed displacement

**General:** Fits for:

SAP 012-064

SCP 012-064

SAPT 090

**Manufacturer:** Sunfab

Item Code	Note	Inlet Connect.	OD Tube (mm)	Angle °
1253251	18245	Hose Mender	32,0	0,0
1253252	18048	Hose Mender	38,0	0,0
1253253	20100	Hose Mender	38,0	45,0
1253254	18400	Hose Mender	38,0	90,0
1253255	20136	Hose Mender	42,0	45,0
1253256	20423	Hose Mender	45,0	45,0
1253259	18401	Hose Mender	50,0	90,0
1253258	20101	Hose Mender	50,0	45,0
1253257	18047	Hose Mender	50,0	0,0
1253260	20139	Hose Mender	64,0	45,0

## // PPAACC205 - PISTON PUMP AXIAL CONNECTIONS SIZE L



**Application:** Suction connections for truck pumps, fixed and variable displacement

**General:** Fits for:

SAP 084-108

SCP 084-108

SAPT 130

SCPD 52/26 + 76/76

SLPD 20/20-64/32

SVH 062-130

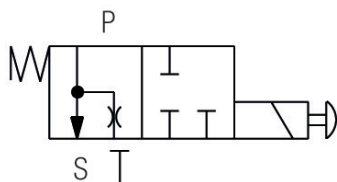
**Manufacturer:** Sunfab

Item Code	Note	Inlet Connect.	OD Tube (mm)	Angle °
1253262	18402	Hose Mender	38,0	90,0
1253261	18049	Hose Mender	38,0	0,0
1253263	20137	Hose Mender	42,0	45,0
1253264	20424	Hose Mender	45,0	45,0
1253267	18403	Hose Mender	50,0	90,0
1253266	20102	Hose Mender	50,0	45,0
1253265	17890	Hose Mender	50,0	0,0
1253270	18394	Hose Mender	64,0	90,0
1253269	20103	Hose Mender	64,0	45,0
1253268	18603	Hose Mender	64,0	0,0
1253272	20274	Hose Mender	75,0	45,0
1253271	18366	Hose Mender	75,0	0,0

# // VALVES PISTON PUMP

## // PPAACV05 - PISTON PUMP SHUT-OFF VALVE

Construction: SBP-1 = SAP 012-064  
 SBP-2 = SAP 084-108  
 Manufacturer: Sunfab



Item Code	WP (bar)	Voltage (V)	Notes
1253275	400	12V DC	SBP-1-M-12V
1253277	400	12V DC	SBP-2-M-12V
1253276	400	24V DC	SBP-1-M-24V
1253278	400	24V DC	SBP-2-M-24V
1253279	400	24V DC	SCPD 56/26 24V

REV.1.1

## // ELECTRIC ACCESSORIES PISTON PUMP

## // PPAACE05 - PISTON PUMP ELECTRIC CABLE

Construction: Deutch connection one side  
Manufacturer: Sunfab

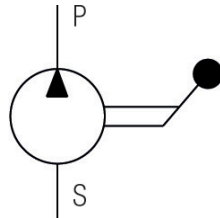


Item Code	Note	Notes
4900448	91078	CABLE LENGTH 2,5M

# // PUMPS

## // HPPAMTS24 - HAND PUMP SINGLE/ DOUBLE ACTING

**Construction:** TS = Single acting includes lowering valve  
 TDS = Double acting includes directional valve  
**Manufacturer:** Contarini Leopoldo SRL



Item Code	Note	Displacement (cm <sup>3</sup> /rv)	Max Contin. Press. (bar)	Outlet Thread Size	Notes
1225772	PAM-TDS 12	12,0	380	3/8"	12CC DOUBLE PORT DCV VALVE
1225769	PAM-TS 12	12,0	380	3/8"	12CC SINGLE PORT LOWERING VALV
1225773	PAM-TDS 25	25,0	350	3/8"	25CC DOUBLE PORT DCV VALVE
1225770	PAM-TS 25	25,0	350	3/8"	25CC SINGLE PORT LOWERING VALV
1225774	PAM-TDS 45	45,0	280	3/8"	45CC DOUBLE PORT DCV VALVE
1225771	PAM-TS 45	45,0	280	3/8"	45CC SINGLE PORT LOWERING VALV



REV.1.1

## // TANKS HANDPUMP

## // HPATPM24 - HAND PUMP TANK

Construction: PAM0290000 = Handle (1 meter)

Manufacturer: Contarini Leopoldo SRL



Item Code	Note	Volume (l)	Material	Notes
1227150	PAM0290000		Steel (Carbon Steel)	HAND LEVER
1225775	PM00220001	1,00	Steel (Carbon Steel)	TANK 1L.
1225776	PM00220003	3,00	Steel (Carbon Steel)	TANK 3L.
1225777	PM00220005	5,00	Steel (Carbon Steel)	TANK 5L.
1227151	PM00220010	10,00	Steel (Carbon Steel)	TANK 10L.

# // GEAR MOTORS

## // GMALEU01-1 -GEAR MOTOR GROUP 1

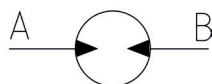
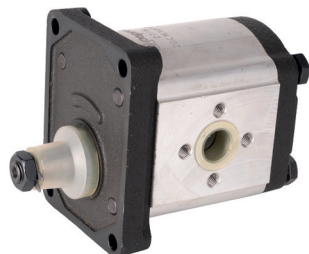
**Termination:** European standard flange

**Rotation:** Bi-directional

**Shaft:** Tapered 1:8

**Material:** Aluminium

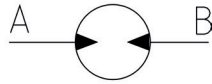
**Manufacturer:** Caproni



Item Code	Note	Nom. Displ. (cm <sup>3</sup> /rev)	Max Contin. Speed (rpm)	Max Contin. Press. (bar)	Ports Size
1252770	10MR1,6X0563G	1,6	3500	210	3/8"
1252771	10MR2X0563G	2,0	3500	210	3/8"
1252772	10MR2,5X0563G	2,5	3500	210	3/8"
1252773	10MR2,65X0563G	2,6	3500	210	1/2"
1252774	10MR3,15X0563G	3,1	3500	210	1/2"
1252775	10MR3,65X0563G	3,6	3500	210	1/2"
1252776	10MR4,2X0563G	4,2	3500	210	1/2"
1252777	10MR4,7X0563G	4,7	3500	210	1/2"
1252778	10MR5X0563G	5,0	3500	210	1/2"
1252779	10MR5,7X0563G	5,7	3000	200	1/2"
1252780	10MR6,1X0563G	6,1	3000	200	1/2"
1252781	10MR7,4X0563G	7,4	2500	180	1/2"
1252782	10MR8X0563G	8,0	2500	150	1/2"
1252783	10MR8,5X0563G	8,5	2500	150	1/2"
1252784	10MR9,8X0563G	9,8	2000	120	1/2"

REV.1.1

## // GMALEU01-2 -GEAR MOTOR GROUP 2



**Termination:** European standard flange

**Rotation:** Bi-directional

**Shaft:** Tapered 1:8

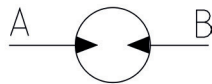
**Ports:** European standard

**Material:** Aluminium

**Manufacturer:** Caproni

Item Code	Note	Nom. Displ. (cm <sup>3</sup> /rev)	Max Contin. Speed (rpm)	Max Contin. Press. (bar)	Fl. Bolt Inlet Diam.	Fl. Bolt Outlet Diam.
1252785	20MR6,3X0546	6,3	3500	200	30,0	30,0
1252786	20MR8,2X0546	8,2	3500	200	30,0	30,0
1252787	20MR10X0546	10,0	3500	200	40,0	40,0
1252788	20MR11X0546	11,0	3500	200	40,0	40,0
1252789	20MR12X0546	12,0	3500	200	40,0	40,0
1252790	20MR14X0546	14,0	3500	200	40,0	40,0
1252791	20MR15X0546	15,0	3500	200	40,0	40,0
1252792	20MR16X0546	16,0	3500	200	40,0	40,0
1252793	20MR19X0546	19,0	2500	180	40,0	40,0
1252794	20MR22X0546	22,0	2500	180	40,0	40,0
1252795	20MR25X0546	25,0	2000	160	40,0	40,0

## // GMALEU01-3 -GEAR MOTOR GROUP 3



**Termination:** European standard flange

**Rotation:** Bi-directional

**Shaft:** Tapered 1:8

**Material:** Aluminium

**Manufacturer:** Caproni

Item Code	Note	Nom. Displ. (cm <sup>3</sup> /rev)	Max Contin. Speed (rpm)	Max Contin. Press. (bar)	Ports Size
1252796	30MR22,5X568HG	22,5	2500	200	3/4"
1252886	30MR25X568HG	25,0	2500	200	3/4"
1252887	30MR28X568HG	28,0	2500	200	3/4"
1252888	30MR32X568HG	32,0	2500	200	1"
1252816	30MR36X568HG	36,0	2300	200	1"
1252817	30MR42X568HG	42,0	2300	200	1"
1252818	30MR46X568HG	46,0	2100	200	1"
1252819	30MR50X568HG	50,0	2100	200	1"
1252820	30MR55X568HG	55,0	1750	200	1"

# // MOTORS

## // OMMP02-ORBITAL MOTORS TYPE MP



**Construction:** Gerotor type design

**Shaft:** Straight key 25mm

**Flange:** SAE A-2

**Ports:** 1/2" BSPP

**Application:** Conveyors, food industries, metal working machines, road building machines, mining machinery, special vehicles

**General:** Shaft seal 150 bar

**Benefits:** Low speed, high torque, high starting torque, high efficiency.

**Manufacturer:** M+S

Item Code	Note	Nom. Displ. (cm <sup>3</sup> /rev)	Max Contin. Speed (rpm)	Peak Speed (rpm)	Max Contin. Press. (bar)	Peak Press. (bar)	Max Contin. Torque (Nm)	Peak Torque (Nm)	Max Contin. Power (kW)	Peak Power (kW)	Max Contin. Flowrate (l/min)
1251975	MP25CDP	25,0	1408	1584	200	225	33	7	4,5	6,1	40
1251976	MP32CDP	32,0	1450	1594	200	225	43	9	5,8	7,8	50
1251977	MP40CDP	40,0	1480	1555	200	225	62	11	8,4	11,6	60
1251978	MP50CDP	50,0	1210	1515	200	225	94	14	10,1	12,2	60
1251979	MP80CDP	80,0	755	945	200	225	151	22	10,2	12,5	60
1251980	MP100CDP	100,0	605	755	200	225	193	28	10,5	12,8	60
1251981	MP125CDP	125,0	486	605	200	225	237	37	10,2	12,0	60
1251982	MP160CDP	160,0	378	472	200	225	311	44	10,1	12,1	60
1251983	MP200CDP	200,0	303	378	200	225	366	55	10,0	12,0	60
1251984	MP250CDP	250,0	242	303	200	225	470	69	9,0	12,0	60
1251985	MP315CDP	315,0	190	236	200	225	480	85	7,6	9,0	60
1251986	MP400CDP	400,0	150	189	200	225	500	85	6,2	7,8	60
1251987	MP500CDP	500,0	120	150	175	225	390	78	3,5	7,2	60
1251988	MP630CDP	630,0	95	120	175	225	440	82	3,3	5,6	60

REV.1.1

## // OMMR02-ORBITAL MOTORS TYPE MR



**Construction:** Geroler type design

**Shaft:** Straight key 25mm

**Flange:** SAE A-2

**Ports:** 1/2" BSPP

**Application:** Conveyors, food industries, metal working machines, road building machines, mining machinery, special vehicles.

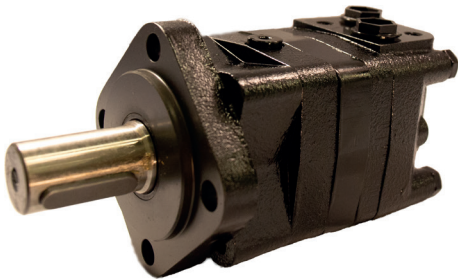
**General:** Shaft seal 150 bar

**Benefits:** Low speed, high torque, high starting torque, high efficiency.

**Manufacturer:** M+S

Item Code	Note	Nom. Displ. (cm <sup>3</sup> /rev)	Max Contin. Speed (rpm)	Peak Speed (rpm)	Max Contin. Press. (bar)	Peak Press. (bar)	Max Contin. Torque (Nm)	Peak Torque (Nm)	Max Contin. Power (kW)	Peak Power (kW)	Max Contin. Flowrate (l/min)
1251989	MR50CDP	50,0	775	970	200	225	100	17	7,0	8,5	40
1251990	MR80CDP	80,0	750	940	200	225	200	27	12,5	15,0	60
1251991	MR100CDP	100,0	600	750	200	225	240	32	13,0	15,0	60
1251992	MR125CDP	125,0	475	600	200	225	300	37	12,5	14,5	60
1251993	MR160CDP	160,0	375	470	200	225	390	46	11,5	14,0	60
1251994	MR200CDP	200,0	300	375	200	225	385	56	9,0	12,0	60
1251995	MR250CDP	250,0	240	300	200	225	390	60	8,0	9,5	60
1251996	MR315CDP	315,0	190	240	200	225	360	61	5,0	8,0	60
1251997	MR400CDP	400,0	150	190	200	225	380	61	4,8	6,8	60

## // OMMS02-ORBITAL MOTORS TYPE MS



**Construction:** Geroler type design

**Shaft:** Straight key 32mm

**Flange:** SAE A-4

**Ports:** 1/2" BSPP

**Application:** Conveyors, food industries, metal working machines, road building machines, mining machinery, special vehicles.

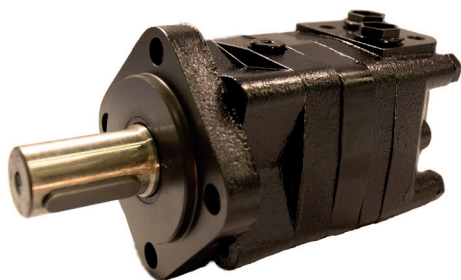
**General:** Standard shaft seal

**Benefits:** Low speed, high torque, high starting torque, high efficiency.

**Manufacturer:** M+S

Item Code	Note	Nom. Displ. (cm <sup>3</sup> /rev)	Max Contin. Speed (rpm)	Peak Speed (rpm)	Max Contin. Press. (bar)	Peak Press. (bar)	Max Contin. Torque (Nm)	Max Contin. Power (kW)	Peak Power (kW)	Max Contin. Flowrate (l/min)
1251998	MS80CP	80,0	810	1000	230	300	240	15,5	19,5	65
1251999	MS100CP	100,0	750	900	230	300	305	18,0	22,8	75
1252000	MS125CP	125,0	600	720	230	300	375	18,0	22,5	75
1252001	MS160CP	160,0	470	560	230	300	490	16,5	23,0	75
1252002	MS200CP	200,0	375	450	230	300	610	16,5	22,0	75
1252003	MS250CP	250,0	300	360	230	300	720	14,5	18,0	75
1252004	MS315CP	315,0	240	290	230	300	825	15,0	17,0	75
1252005	MS400CP	400,0	190	230	230	300	865	11,0	12,5	75
1252006	MS475CP	475,0	160	190	230	300	850	8,4	11,3	75
1252007	MS525CP	525,0	145	175	230	300	850	7,6	10,4	75
1252008	MS565CP	565,0	130	160	230	300	850	6,9	9,6	75

**// OMMT02-ORBITAL MOTORS  
TYPE MT**



**Construction:** Geroler type design

**Shaft:** Straight key 40mm

**Flange:** ISO 3019 4H D125 flange

**Ports:** 3/4" BSPP

**Application:** Conveyors, food industries, metal working machines, road building machines, mining machinery, special vehicles.

**General:** Standard shaft seal

**Benefits:** Low speed, high torque, high starting torque, high efficiency.

**Manufacturer:** M+S

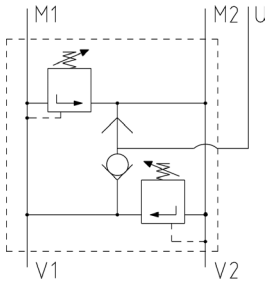
Item Code	Note	Nom. Displ. (cm <sup>3</sup> /rev)	Max Contin. Speed (rpm)	Peak Speed (rpm)	Max Contin. Press. (bar)	Peak Press. (bar)	Max Contin. Torque (Nm)	Peak Torque (Nm)	Max Contin. Power (kW)	Peak Power (kW)	Max Contin. Flowrate (l/min)
1253001	MT160CP	160,0	622	755	250	300	470	660	26,5	32,0	100
1253002	MT200CP	200,0	620	752	250	300	590	820	33,5	40,0	125
1253003	MT250CP	250,0	496	601	250	300	730	1020	33,5	40,0	125
1253004	MT315CP	315,0	382	461	250	300	950	1330	33,5	40,0	125
1253005	MT400CP	400,0	238	368	250	300	1080	1440	30,0	35,0	125
1253006	MT500CP	500,0	238	289	250	300	1220	1600	26,5	30,0	125
1253011	MT630CP	630,0	197	234	250	300	1300	1760	24,3	27,5	125
1253012	MT725CP	725,0	172	209	250	300	1270	1750	20,2	26,8	125

REV.1.1

## // ORBITAL MOTOR VALVES

### // PRVOM11 - RELIEF VALVE FOR ORBITAL MOTOR

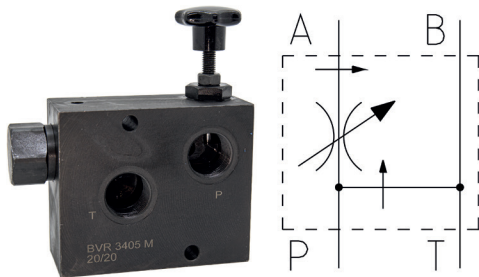
**Application:** Fits M+S orbit motors  
**General:** Double relief valve / chock valve  
**Manufacturer:** Marchesini



Item Code	Note	Ports Size	Flow Rate (l/min)	Press. Range (bar)
1225310	VAU1/2" OMS	1/2"	50,0	30 - 180
1225311	VAU1/2" DE OMP/OMR	1/2"	60,0	30 - 180
1225312	VAU3/4" OMT	3/4"	100,0	30 - 180

### // FCVPVOM02 - PRIORITY VALVE ORBITAL MOTOR

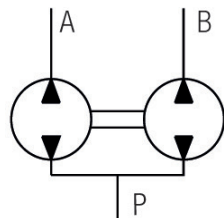
**General:** Fits M+S orbit motors,  
**Series:** MP + MR  
**Manufacturer:** Hydrosell



Item Code	Note	Flow Rate (l/min)	WP (bar)
1254248	BVR1205	70,0	250
1254249	BVR3405	70,0	250

# // ROTATING FLOW DIVIDERS

## // FDGTW0V17 - ROTATING FLOW DIVIDER



**Construction:** Rotating flow divider, gear type  
Without anti cavitation valves  
**Material:** Flow Divider: Aluminium  
**Gasket:** NBR  
**Manufacturer:** Vivoil

Item Code	Note	Nom. Displ. (cm3/rev)	Nom. Displ. 2 (cm3/rev)	Nom. Displ. 3 (cm3/rev)	Max Contin. Speed (rpm)	Inlet Thread Size	Outlet Thread Size	Rotation
1227192	RV-1D/3,8X2	3,8	3,8		2700	1/2"	2X3/8"	Bi-directional
1227193	RV-1D/4,9X2	4,9	4,9		2700	1/2"	2X3/8"	Bi-directional
1227194	RV-1D/6,5X2	6,5	6,5		2700	1/2"	2X3/8"	Bi-directional
1227195	RV-2D/9X2	9,0	9,0		2500	3/4"	2X1/2"	Bi-directional
1227199	RV-2D/9X3	9,0	9,0	9,0	2500	3/4"	3X1/2"	Bi-directional
1227196	RV-2D/14X2	14,0	14,0		2500	3/4"	2X1/2"	Bi-directional
1227200	RV-2D/14X3	14,0	14,0	14,0	2500	3/4"	3X1/2"	Bi-directional
1227197	RV-2D/22X2	22,0	22,0		2500	3/4"	2X1/2"	Bi-directional
1227198	RV-2D/30X2	30,0	30,0		2500	1"	2X1/2"	Bi-directional
1227201	RV-2D/22X3	22,0	22,0	22,0	2500	1"	3X1/2"	Bi-directional
1227202	RV-2D/30X3	30,0	30,0	30,0	2500	1"	3X1/2"	Bi-directional



REV.1.1

## // WELDED HYDRAULIC CYLINDERS

## // HCWC28 - HYDRAULIC CYLINDER



**General:** Welded hydraulic cylinders with spherical bearings front and rear

Other dimensions/types are available upon request

**Pressure:** Max pressure 250 bar

**Construction:** SL= Stroke Length

L = C-C measure (retracted)

**Ports:** All ports has BSPP thread, see size in table below

Item Code	ID (mm)	OD Piston Rod (mm)	SL (mm)	L (mm)	Inlet Thread Size	Connect. Size - Body	Connect. Size - Rod
1256269	25	16	100	207,0	1/4	10	10
1256270	25	16	200	307,0	1/4	10	10
1256271	25	16	300	407,0	1/4	10	10
1256272	25	16	400	507,0	1/4	10	10
1256273	40	25	100	280,0	3/8	20	20
1256274	40	25	200	340,0	3/8	20	20
1256275	40	25	300	480,0	3/8	20	20
1256276	40	25	400	580,0	3/8	20	20
1256277	40	25	500	680,0	3/8	20	20
1256278	40	25	600	780,0	3/8	20	20
1256279	50	32	100	290,0	3/8	25	25
1256521	50	32	150	340,0	3/8	25	25
1256280	50	32	200	390,0	3/8	25	25
1256522	50	32	250	440,0	3/8	25	25
1256281	50	32	300	490,0	3/8	25	25
1256523	50	32	350	540,0	3/8	25	25
1256282	50	32	400	590,0	3/8	25	25
1256524	50	32	450	640,0	3/8	25	25
1256283	50	32	500	690,0	3/8	25	25
1256284	50	32	600	790,0	3/8	25	25
1256285	50	32	700	890,0	3/8	25	25
1256286	50	32	800	990,0	3/8	25	25
1256287	50	32	1000	1190,0	3/8	25	25
1256288	50	32	1200	1390,0	3/8	25	25
1256289	50	32	1500	1690,0	3/8	25	25
1256290	63	32	100	320,0	1/2	30	30
1256525	63	32	150	370,0	1/2	30	30
1256291	63	32	200	420,0	1/2	30	30
1256526	63	32	250	470,0	1/2	30	30
1256292	63	32	300	520,0	1/2	30	30
1256527	63	32	350	570,0	1/2	30	30
1256293	63	32	400	620,0	1/2	30	30
1256528	63	32	450	670,0	1/2	30	30
1256294	63	32	500	720,0	1/2	30	30
1256529	63	32	550	770,0	1/2	30	30
1256295	63	32	600	820,0	1/2	30	30
1256530	63	32	650	870,0	1/2	30	30
1256296	63	32	700	920,0	1/2	30	30
1256297	63	40	600	820,0	1/2	30	30
1256298	63	40	700	920,0	1/2	30	30
1256299	63	40	800	1020,0	1/2	30	30
1256300	63	40	1000	1220,0	1/2	30	30
1256531	80	40	150	385,0	1/2	35	35
1256301	80	40	200	435,0	1/2	35	35
1256302	80	40	300	535,0	1/2	35	35
1256533	80	40	350	585,0	1/2	35	35
1256303	80	40	400	635,0	1/2	35	35

Item Code	ID (mm)	OD Piston Rod (mm)	SL (mm)	L (mm)	Inlet Thread Size	Connect. Size - Body	Connect. Size - Rod
1256534	80	40	450	685,0	1/2	35	35
1256304	80	40	500	735,0	1/2	35	35
1256535	80	40	550	785,0	1/2	35	35
1256305	80	40	600	835,0	1/2	35	35
1256536	80	40	650	885,0	1/2	35	35
1256306	80	40	700	935,0	1/2	35	35
1256307	80	40	800	1035,0	1/2	35	35
1256537	80	50	500	735,0	1/2	35	35
1256308	80	50	600	835,0	1/2	35	35
1256309	80	50	700	935,0	1/2	35	35
1256310	80	50	800	1035,0	1/2	35	35
1256311	80	50	1000	1235,0	1/2	35	35
1256538	100	50	150	430,0	3/4	45	20
1256312	100	50	200	480,0	3/4	45	20
1256539	100	50	250	530,0	3/4	45	20
1256313	100	50	300	580,0	3/4	45	45
1256540	100	50	350	630,0	3/4	45	20
1256314	100	50	400	680,0	3/4	45	45
1256541	100	50	450	730,0	3/4	45	20
1256315	100	50	500	780,0	3/4	45	45
1256542	100	50	550	830,0	3/4	45	20
1256316	100	50	600	880,0	3/4	45	45
1256543	100	50	650	930,0	3/4	45	20
1256317	100	50	700	980,0	3/4	45	45
1256318	100	50	800	1080,0	3/4	45	45
1256319	100	50	1000	1280,0	3/4	45	45
1256320	100	63	700	980,0	3/4	45	45
1256321	100	63	800	1080,0	3/4	45	45
1256322	100	63	1000	1280,0	3/4	45	45

// HCWCSK28 - SEAL KIT HYDRAULIC CYLINDER

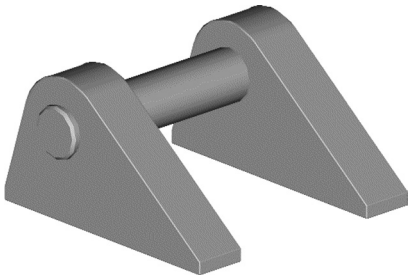
General: Seal kits for our hydraulic cylinders.

Item Code	ID (mm)	OD Piston Rod (mm)
1256507	25	16
1256508	40	25
1256509	50	32
1256510	63	32
1256511	63	40
1256512	80	40
1256513	80	50
1256514	100	50
1256515	100	63

REV.1.1

## // HCWCCM28 - CYLINDER MOUNTS HYDRAULIC CYLINDER

**General:** Welding mounts for hydraulic cylinders  
Shaft and locking rings are included  
See shaft diameter in table below.



Item Code	Connect. Size - Body
1256516	20
1256517	25
1256518	30
1256519	35
1256520	45

## // MONOBLOCK VALVES

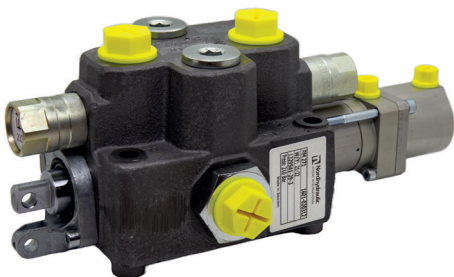
### // DCVMB7025 - DIRECTIONAL CONTROL VALVE - 70 L/MIN



**General:** Directional control valve RM230  
 Manual control with hand lever  
 Spool type C = double acting with closed center  
**Ports:** P, A, B and T2 = 1/2"  
 T1 = 3/4"  
**Manufacturer:** Nordhydraulic

Item Code	Note	Operation Type	Spool Type	N. of positions	Flow Rate (l/min)	WP (bar)
1256329	1571-020316	Manual	C	1	70,0	210
1256330	1572-020317	Manual	C	2	70,0	210
1256331	1573-020318	Manual	C	3	70,0	210
1256332	1574-020319	Manual	C	4	70,0	210

### // DCVMB12025 - DIRECTIONAL CONTROL VALVE - 120 L/MIN



**General:** Directional control valve RM270  
 Pneumatic controlled, other possibilities available  
 Spool type C = double acting with closed center  
**Ports:** P, A, B and T2 = 3/4"  
 T1 = 1"  
**Manufacturer:** Nordhydraulic

Item Code	Note	Operation Type	Spool Type	N. of positions	Flow Rate (l/min)	WP (bar)
1256325	1601-020312	Pneumatic	C	1	120,0	210
1256326	1602-020313	Pneumatic	C	2	120,0	210
1256327	1603-020314	Pneumatic	C	3	120,0	210
1256328	1604-020315	Pneumatic	C	4	120,0	210

REV.1.1

## // MONOBLOCK VALVES ACCESSORIES

## // DCVMBSP25 - SPARE PARTS FOR MONOBLOCK VALVES

Application: Spare parts for RM230 + RM 270 Series  
 Manufacturer: Nordhydraulic



Item Code	Note	Flow Rate (l/min)	WP (bar)	Notes
1256336	2100-267507	70,0		SPOOL 4-POS FLOAT RM23X
1256335	2100-267511	70,0		SPOOL MOTOR RM23X
1256343	2160-266112	70,0	210	SPOOL CTRL. 11 RM23X
1256345	2190-266999	70,0		BRACKET M29 RM23X
1256341	2230-266987	70,0		VAL.SERIE ADAPTER RM23X
1256347	2240-265363	70,0	210	SPOOL SEAL KIT RM23X
1256339	2275-129233	70,0	190	VAL.PRESS.REL. 190B RM23X
1256349	8020-210269	70,0	210	SEAL DISC S RM23X
1256350	8150-210450	70,0	64	SPRING PRESS.REL. 64B RM23X
1256351	8150-210451	70,0	94	SPRING PRESS.REL. 94B RM23X
1256352	8150-210452	70,0	124	SPRING PRESS.REL. 124B RM23X
1256353	8150-210453	70,0	159	SPRING PRESS.REL. 159B RM23X
1256354	8150-210454	70,0	199	SPRING PRESS.REL. 199B RM23X
1256355	8150-210455	70,0	239	SPRING PRESS.REL. 239B RM23X
1256334	2125-269844	120,0		SPOOL 4-POS FLOAT RM27X
1256333	2125-6902944	120,0		SPOOL MOTOR RM27X
1256342	2175-269605	120,0	210	SPOOL CTRL. 9 RM27X
1256340	2230-260049	120,0		VAL.SERIE ADAPTER RM27X
1256344	2230-6915574	120,0		KIT EL/PNEUMATIC RM27X
1256346	2240-2604549	120,0	210	SPOOL SEAL KIT RM27X
1256338	2275-200236	120,0	200	VAL.PRESS.REL. 200B RM27X
1256337	2275-701200	120,0	205	VAL.CHOCK 205B RM27X
1256348	8020-210665	120,0	210	SEAL DISC S RM27X
1256356	8150-210462	120,0	65	SPRING PRESS.REL. 65B RM27X
1256357	8150-210463	120,0	90	SPRING PRESS.REL. 90B RM27X
1256358	8150-210464	120,0	125	SPRING PRESS.REL. 125B RM27X
1256359	8150-210465	120,0	155	SPRING PRESS.REL. 155B RM27X
1256360	8150-210466	120,0	210	SPRING PRESS.REL. 210B RM27X
1256361	8150-210467	120,0	270	SPRING PRESS.REL. 270B RM27X
1256362	8150-210468	120,0	300	SPRING PRESS.REL. 300B RM27X

## // MANUAL MONOBLOCK VALVES

### // DCVMB4015 - MANUAL DIRECTIONAL CONTROL VALVE - 40 L/ MIN



**General:** Including pressure relief valve  
 Max pressure = 250 bar  
 Max Flow = 40 l/min  
 Prepared for carry over adapter  
 Spool type A = double acting with closed center  
**Ports:** F1 = P & T  
 F2 = A & B

Item Code	Note	Spool Type	F1	F2
1227793	DE41A1	A	1/2-14	3/8-19
1227794	DE42A1A1	AA	1/2-14	3/8-19
1227795	DE42A1B1	Single + Double	1/2-14	3/8-19
1227796	DE42A1L12	Double	1/2-14	3/8-19
1227797	DE43A1A1A1	AAA	1/2-14	3/8-19
1227798	DE44A1A1A1A1	AAAA	1/2-14	3/8-19
1231842	DE455XA1	AAAAA	1/2-14	3/8-19
1231843	DE466XA1	AAAAAA	1/2-14	3/8-19
1231844	DE477XA1	AAAAAAA	1/2-14	3/8-19

### // DCVMB8015 - MANUAL DIRECTIONAL CONTROL VALVE - 80 L/ MIN



**General:** Including pressure relief valve  
 Max pressure = 250 bar  
 Max flow = 80 l/min  
 Prepared for carry over adapter  
 Spool type A = double acting with closed center  
**Ports:** F1 = P & T  
 F2 = A & B

Item Code	Note	Spool Type	F1	F2
1227811	DE81A1	A	3/4-14	1/2-14
1227812	DE82A1A1	AA	3/4-14	1/2-14
1227813	DE82A1B1	Single + Double	3/4-14	1/2-14
1227814	DE82A1L12	Double	3/4-14	1/2-14
1227815	DE83A1A1A1	AAA	3/4-14	1/2-14
1227816	DE84A1A1A1A1	AAAA	3/4-14	1/2-14
1231846	DE855XA1	AAAAA	3/4-14	1/2-14
1231847	DE866XA1	Double	3/4-14	1/2-14
1225813	P80U17GKZ1T	Double	3/4-14	1/2

## // ACCESSORIES MONOBLOCK VALVES

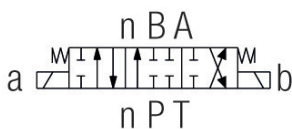
// DCVMBSP15 - SPARE PARTS FOR  
MANUAL MONOBLOCK VALVES

General: For DCVMB4015 and DCVMB8015

Item Code	Flow Rate (l/min)	WP (bar)	Notes
1227789	40,0	250	SPRING CENT./DET.(PUSH) P40
1227785	40,0	250	SPOOL B (SINGLE ACTING)FOR P40
1227791	40,0	250	SPOOL D (MOTOR) FOR P40
1231845	40,0	250	SPOOL C SINGLE ACTING FOR P40
1227819	40,0	250	STD SERIE ADAPTER P40
1227788	40,0	250	SPRING CENT./DET. (PULL) P40
1227800	40,0	250	HAND LEVER FOR P40,BADESTNOST
1227792	40,0	250	SPOOL L FLOATING) FOR P40
1227786	40,0	250	SPRING CENTERED FOR P40
1227821	40,0	250	CARRY OVER PLUG FOR P40
1227817	40,0	250	HAND LEVER KIT FOR P40
1227784	40,0	250	SPOOL A (DOUBLE ACTING)FOR P40
1227790	40,0	250	DET. A+B P40
1227787	40,0	250	DET.IN FLOAT. POSITION FOR P40
1227799	80,0	250	HAND LEVER FOR P80,BADESTNOST
1228267	80,0	250	STD SERIE ADAPTER P80
1227806	80,0	250	SPRING CENT./DET. (PUSH) P80
1227818	80,0	250	HAND LEVER KIT FOR P80
1227809	80,0	250	SPOOL L FLOATING) FOR P80
1227803	80,0	250	SPRING CENTERED FOR P80
1231848	80,0	250	SPOOL C SINGLE ACTING FOR P80
1231849	80,0	250	CARRY OVER PLUG FOR P80
1227807	80,0	250	DET. A+B P80
1227804	80,0	250	DET. IN FLOAT.POSITION FOR P80
1227801	80,0	250	SPOOL A (DOUBLE ACT.) FOR P80
1227808	80,0	250	SPOOL D (MOTOR) FOR P80
1227805	80,0	250	SPRING CENT./DET. (PULL) P80
1227802	80,0	250	SPOOL B (SINGLE ACT.) FOR P80

# // ELECTRIC MONOBLOCK VALVES

## // DCVMBE5015 - ELECTRICAL DIRECTIONAL CONTROL VALVE - 50 L/ MIN



**General:** Including pressure relief valve  
 Max pressure = 250 Bar  
 Max flow = 50 l/min  
 Prepared for carry over adapter  
 Spool type A = double acting with closed center  
**Ports:** F1 = P & T  
 F2 = P & T

Item Code	Spool Control	Spool Type	F1	F2	Voltage (V)	Notes
1231865	Electric ON/OFF	A	1/2-14	3/8-19	24V DC	MONOBLOCK VALVE EL. 1
1231867	Electric ON/OFF	AA	1/2-14	3/8-19	24V DC	MONOBLOCK VALVE EL. 2
1231866	Electric ON/OFF	AA	1/2-14	3/8-19	12V DC	MONOBLOCK VALVE EL. 2
1231869	Electric ON/OFF	AAA	1/2-14	3/8-19	24V DC	MONOBLOCK VALVE EL. 3
1231868	Electric ON/OFF	AAA	1/2-14	3/8-19	12V DC	MONOBLOCK VALVE EL. 3
1231870	Electric ON/OFF	AAAA	1/2-14	3/8-19	12V DC	MONOBLOCK VALVE EL. 4
1231871	Electric ON/OFF	AAAA	1/2-14	3/8-19	24V DC	MONOBLOCK VALVE EL. 4
1231873	Electric ON/OFF	AAAAA	1/2-14	3/8-19	24V DC	MONOBLOCK VALVE EL. 5
1231872	Electric ON/OFF	AAAAA	1/2-14	3/8-19	12V DC	MONOBLOCK VALVE EL. 5
1231875	Electric ON/OFF	AAAAAA	1/2-14	3/8-19	24V DC	MONOBLOCK VALVE EL. 6
1231874	Electric ON/OFF	AAAAAA	1/2-14	3/8-19	12V DC	MONOBLOCK VALVE EL. 6
1231876	Electric ON/OFF	AAAAAAA	1/2-14	3/8-19	12V DC	MONOBLOCK VALVE EL. 7
1231864	Electric ON/OFF	A	1/2-14	3/8-19	12V DC	MONOBLOCK VALVE EL. 1

## // DCVMBE8015 - ELECTRICAL DIRECTIONAL CONTROL VALVE - 80 L/ MIN



**General:** Including pressure relief valve  
 Max pressure = 250 Bar  
 Max flow = 80 l/min  
 Prepared for carry over adapter  
 Spool type A = double acting with closed center  
**Ports:** F1 = A & B  
 F2 = P & T

Item Code	Spool Control	Spool Type	F1	F2	Voltage (V)	Notes
1231879	Electric ON/OFF	A	1/2-14	3/4-14	24V DC	MONOBLOCK VALVE EL. 1
1231878	Electric ON/OFF	A	1/2-14	3/4-14	12V DC	MONOBLOCK VALVE EL. 1
1231881	Electric ON/OFF	AA	1/2-14	3/4-14	24V DC	MONOBLOCK VALVE EL. 2
1231880	Electric ON/OFF	AA	1/2-14	3/4-14	12V DC	MONOBLOCK VALVE EL. 2
1231882	Electric ON/OFF	AAA	1/2-14	3/4-14	12V DC	MONOBLOCK VALVE EL. 3
1231883	Electric ON/OFF	AAA	1/2-14	3/4-14	24V DC	MONOBLOCK VALVE EL. 3
1231885	Electric ON/OFF	AAAA	1/2-14	3/4-14	24V DC	MONOBLOCK VALVE EL. 4
1231884	Electric ON/OFF	AAAA	1/2-14	3/4-14	12V DC	MONOBLOCK VALVE EL. 4
1231887	Electric ON/OFF	AAAAA	1/2-14	3/4-14	24V DC	MONOBLOCK VALVE EL. 5
1231886	Electric ON/OFF	AAAAA	1/2-14	3/4-14	12V DC	MONOBLOCK VALVE EL. 5
1231888	Electric ON/OFF	AAAAAA	1/2-14	3/4-14	12V DC	MONOBLOCK VALVE EL. 6
1231889	Electric ON/OFF	AAAAAA	1/2-14	3/4-14	24V DC	MONOBLOCK VALVE EL. 6

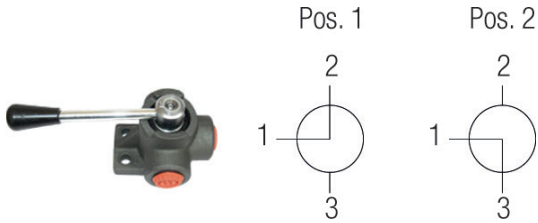


REV.1.1

# MANUAL VALVES

## DMVDF311 - SELECTOR VALVE 3 PORT MANUAL

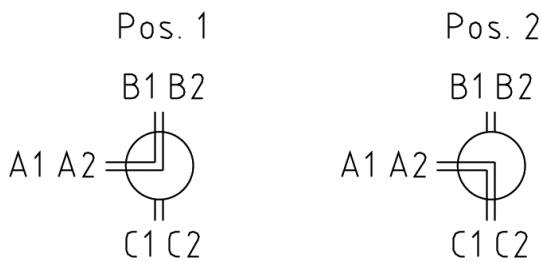
Construction: L bore  
 Manufacturer: Marchesini



Item Code	Note	Flow Rate (l/min)	WP (bar)	F1
1222715	DF3VIE3/8"	60,0	315	3/8-19
1222719	DF3VIE1/2"	90,0	280	1/2-14
1222705	DF3VIE3/4"	120,0	250	3/4-14
1222707	DF3VIE1"	180,0	250	1-11

## DMVDF611 - SELECTOR VALVE 6 PORT MANUAL

Construction: L bore  
 Manufacturer: Marchesini

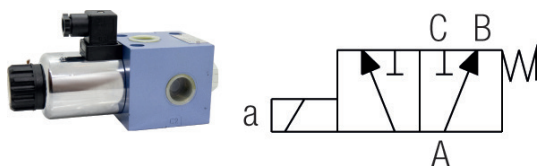


Item Code	Note	Flow Rate (l/min)	WP (bar)	F1
1222716	DF6VIE3/8"	60,0	315	3/8-19
1222720	DF6VIE1/2"	90,0	280	1/2-14
1227824	DF6VIE3/4"	100,0	250	3/4-14
1227825	DF6VIE1"	180,0	250	1-11

## // DIVERTER VALVES

### // DCVMB16 - 3/2 DIVERTER VALVE

Manufacturer: Ponar Wadowice S.A.

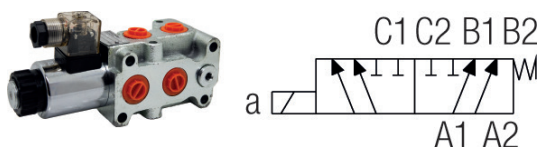


Item Code	Note	Ports Size	Flow Rate (l/min)	WP (bar)	Voltage (V)
1231899	3/2URER6-12/BG2YG12Z4	1/2"	60,0	315	12V DC
1231901	3/2URER10-12/BG2YG12Z4	3/4"	140,0	315	12V DC
1231900	3/2URER6-12/BG2YG24Z4	1/2"	60,0	315	24V DC
1231902	3/2URER10-12/BG2YG24Z4	3/4"	140,0	315	24V DC

### // DCVMB15 - 6/2 DIVERTER VALVE

Construction: Valve is buildable

Pressure: Max pressure with drain connected: 210 bar



Item Code	Note	Ports Size	Flow Rate (l/min)	WP (bar)	Voltage (V)
1231903	DVS6-6/2-L-12DC-G38-02	3/8"	50,0	315	12V DC
1228124	1SVV 6/2 12DC G	1/2"	90,0	210	12V DC
1231904	DVS6-6/2-L-24DC-G38-02	3/8"	50,0	315	24V DC
1231906	SVV6/2-24DC-G	1/2"	90,0	210	24V DC

REV.1.1

## // ACCESSORIES

## // DCVNG6SP16 - COILS DIVERTER/NG VALVES

Construction: MR-045 = NG6  
 MR-060 = NG10  
 Manufacturer: Ponar



Item Code	Note	Voltage (V)	Notes
1220012	MR-045-0-B-12DC	12V DC	3/2 60L/MIN & 6/2 50L/MIN
1233117	COIL-12VDC-SVV90	12V DC	6/2 90L/MIN
1220050	MR-060-0-12DC	12V DC	3/2 140L/MIN
1220013	MR-045-0-B-24DC	24V DC	3/2 60L/MIN & 6/2 50L/MIN
1233118	COIL-24VDC-SVV90	24V DC	6/2 90L/MIN
1220055	MR-060-0-24DC	24V DC	3/2 140L/MIN

# // CETOP/NG VALVES

## // DCVNG616 - DIRECTIONAL CONTROL VALVE - NG6



**General:** Coils buys separate, see page 37

**Construction:** Bolt M5x50, SAP code 121998 (Dir. control valve)  
Bolt M5x90, SAP code 122000 (Dir. control valve + additional valve)

**Manufacturer:** Ponar Wadowice S.A.

Item Code	Note	Spool Type	Flow Rate (l/min)	WP (bar)
1252852	4WE6C-32/XXXNZ4	C	80,0	350
1252847	4WE6E-32/XXXNZ4	E	80,0	350
1252850	4WE6G-32/XXXNZ4	G	80,0	350
1252851	4WE6H-32/XXXNZ4	H	80,0	350
1252853	4WE6HA-32/XXXNZ4	H-A	80,0	350
1252848	4WE6J-32/XXXNZ4	J	80,0	350

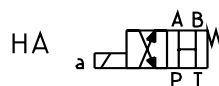
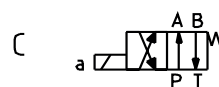
## // DCVNG1016 - DIRECTIONAL CONTROL VALVE - NG10



**General:** Coils buys separate, see page 37

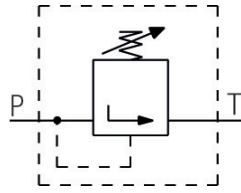
**Construction:** Bolt M6x40, SAP code 122001 (Dir. control valve)  
**Manufacturer:** Ponar Wadowice S.A.

Item Code	Note	Spool Type	Flow Rate (l/min)	WP (bar)
1253397	4WE10C-62/XXXNZ4	C	160,0	350
1253393	4WE10E-62/XXXNZ4	E	160,0	350
1253395	4WE10G-62/XXXNZ4	G	160,0	350
1253396	4WE10H-62/XXXNZ4	H	160,0	350
1253398	4WE10HA-62/XXXNZ4	H-A	160,0	350
1253394	4WE10J-62/XXXNZ4	J	160,0	350



REV.1.1

**// VPCVRLVC16 - PRESSURE RELIEF VALVE NG6/NG10**



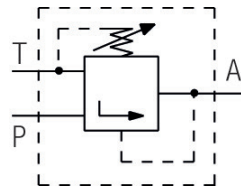
**Construction:** Height NG6 = 40 mm  
Height NG10 = 37 mm

AT = A to Tank  
BT = B to tank  
PT = P to tank  
ATBT = A & B to tank

**Manufacturer:** Ponar Wadowice S.A.

Item Code	Note	Spool Type	Valve Size	Flow Rate (l/min)	WP (bar)	Press. Range (bar)
1231927	UZPR6-42/350-2AT	A	NG6	60,0	350	15 - 200
1231929	UZPR6-42/350-2ATBT	AB	NG6	60,0	350	15 - 200
1231928	UZPR6-42/350-2BT	B	NG6	60,0	350	15 - 200
1231926	UZPR6-42/350-2PT	P	NG6	60,0	350	20 - 350
1253399	UZPR10S02/350-2PT	P	NG10	100,0	350	120 - 350
1253401	UZPR10S02/350-2BT	B	NG10	100,0	350	120 - 350
1253402	UZPR10S02/350-2ATBT	AB	NG10	100,0	350	120 - 350
1253400	UZPR10S02/350-2AT	A	NG10	100,0	350	120 - 350

**// VPCVRDVC16 - PRESSURE REDUCING VALVE NG6/NG10**



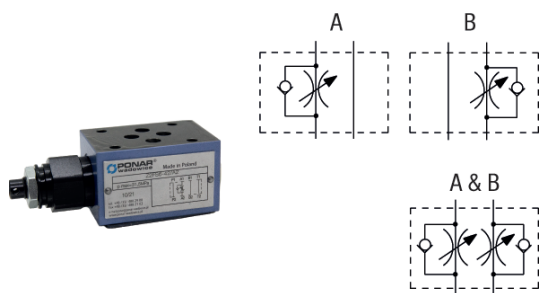
**Construction:** Height NG6 = 40 mm  
Height NG10 = 55 mm

**Manufacturer:** Ponar Wadowice S.A.

Item Code	Note	Valve Size	Flow Rate (l/min)	WP (bar)	Press. Range (bar)
1231932	UZRR6-42/350-25	NG6	50,0	350	120 - 350
1231931	UZRR6-42/200-25	NG6	50,0	350	50 - 220
1253403	UZCR10/23-21Y2P	NG10	120,0	350	50 - 210

**// FCVTCVC16 - THROTTLE/CHECK VALVE NG6/NG10**

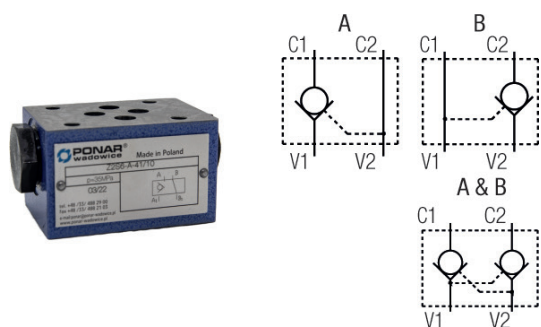
**Construction:** Height NG6 = 40 mm  
 Height NG10 = 34 mm  
**Manufacturer:** Ponar Wadowice S.A.



Item Code	Note	Spool Type	Valve Size	Flow Rate (l/min)	WP (bar)
1231936	Z2FS6-42/A1	A	NG6	60,0	315
1231938	Z2FS6-42/2	AB	NG6	60,0	315
1231937	Z2FS6-42/B1	B	NG6	60,0	315
1253404	Z2FS10A/23	A	NG10	80,0	315
1253406	Z2FS10/23	AB	NG10	80,0	315
1253405	Z2FS10B/23	B	NG10	80,0	315

**// FCVPOCVC16 - PILOT OPERATED CHECK VALVE NG6/NG10**

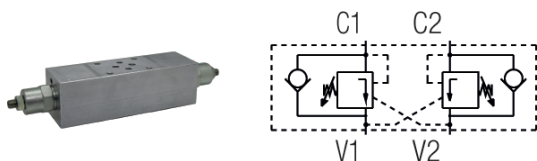
**Construction:** Height NG6 = 40 mm  
 Height NG10 = 50 mm  
**Manufacturer:** Ponar Wadowice S.A.



Item Code	Note	Spool Type	Valve Size	Flow Rate (l/min)	WP (bar)	Cracking Press (bar)
1231933	Z2S6A-41/10	A	NG6	60,0	315	1
1231935	Z2S6-41/10	AB	NG6	60,0	315	1
1231934	Z2S6B-41/10	B	NG6	60,0	315	1
1253407	Z2S10-A-10/	A	NG10	80,0	315	1,5
1253408	Z2S10-B-10/	B	NG10	80,0	315	1,5
1253409	Z2S10-10/	AB	NG10	80,0	315	1,5

REV.1.1

## // FCVOCVC12 - OVERCENTER VALVE NG6/NG10



**Construction:** Height NG6 = 45 mm

Height NG10 = 85 mm

**Manufacturer:** OMT S.p.a.

Item Code	Note	Valve Size	Flow Rate (l/min)	WP (bar)	Press. Range (bar)	Pilot Ratio
1219964	N01.226.0X0.A	NG6	35,0	350	60 - 350	1:4.5
1255297	001.292.0X0.A	NG10	90,0	350	60 - 350	1:5.5

## // DCVNG23 - DIRECTIONAL CONTROL VALVE NG6



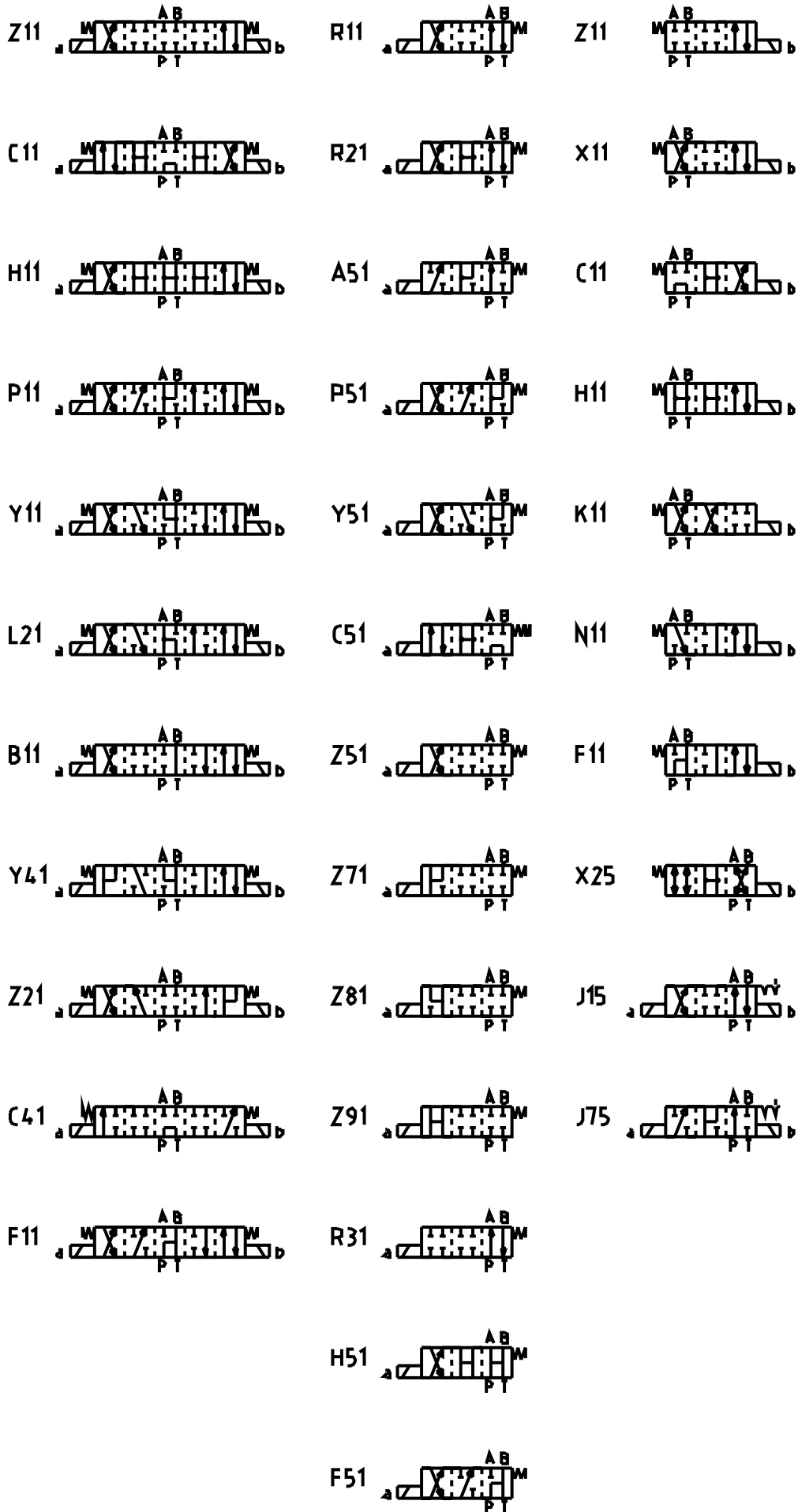
**General:** Coils buys separate, see page 37

**Construction:** Bolt M5x45, SAP code 121997 (Dir. control valve)

Bolt M5x85, SAP code 121999 (Dir. control valve + additional valve)

**Manufacturer:** Argo Hytos

Item Code	Note	Spool Type	Flow Rate (l/min)	WP (bar)
1254911	RPE3-062A51 15762200	A51	80,0	350
1254925	RPE3-062F11 21423400	F11	80,0	350
1254922	RPE3-062H11 15766200	H11	80,0	350
1254919	RPE3-062H51 15764800	H51	80,0	350
1254923	RPE3-062K11 15780800	K11	80,0	350
1254924	RPE3-062N11 15787900	N11	80,0	350
1254928	RPE3-062N51 27692000	N51	80,0	350
1254912	RPE3-062P51 15780600	P51	80,0	350
1254909	RPE3-062R11 15761200	R11	80,0	350
1254910	RPE3-062R21 15763200	R21	80,0	350
1254918	RPE3-062R31 15801600	R31	80,0	350
1254927	RPE3-062R51 15829900	R51	80,0	350
1254921	RPE3-062X11 15763800	X11	80,0	350
1254929	RPE3-062X51 27201900	X51	80,0	350
1254926	RPE3-062Y11 15787600	Y11	80,0	350
1254913	RPE3-062Y51 15765600	Y51	80,0	350
1254920	RPE3-062Z11 15770900	Z11	80,0	350
1254914	RPE3-062Z51 15766500	Z51	80,0	350
1254915	RPE3-062Z71 15808700	Z71	80,0	350
1254916	RPE3-062Z81 15787700	Z81	80,0	350
1254917	RPE3-062Z91 15802700	Z91	80,0	350
1254935	RPE3-063B11 15771300	B11	80,0	350
1255350	RPE3-063C11 15757600	C11	80,0	350
1254938	RPE3-063F11 15771700	F11	80,0	350
1254931	RPE3-063H11 15758600	H11	80,0	350
1254934	RPE3-063L21 15772000	L21	80,0	350
1254939	RPE3-063N11 21413700	N11	80,0	350
1254932	RPE3-063P11 15759500	P11	80,0	350
1254933	RPE3-063Y11 15759900	Y11	80,0	350
1254936	RPE3-063Y41 15783600	Y41	80,0	350
1254930	RPE3-063Z11 15756300	Z11	80,0	350
1254937	RPE3-063Z21 15788200	Z21	80,0	350

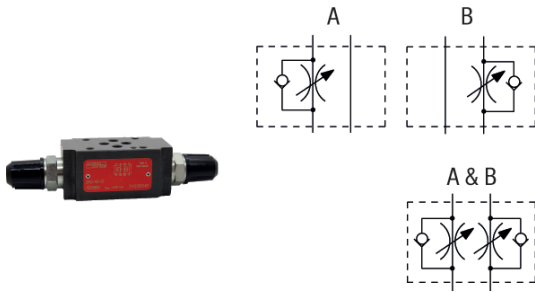




REV.1.1

### // FCVTCVC23 - THROTTLE/CHECK VALVE NG6

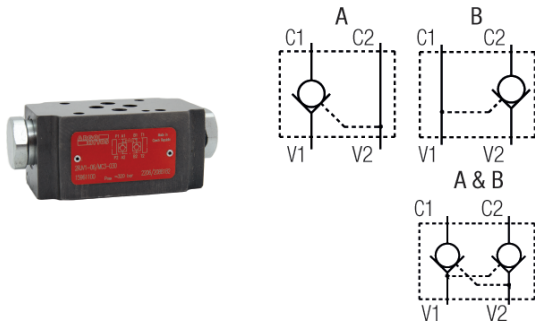
Construction: Height = 40 mm  
 Manufacturer: Argo Hytos



Item Code	Note	Spool Type	Valve Size	Flow Rate (l/min)	WP (bar)
1254977	2VS3-06-AT	A	NG6	80,0	320
1254978	2VS3-06-BT	B	NG6	80,0	320
1254979	2VS3-06-CT	AB	NG6	80,0	320

### // FCVPOCVC23 - PILOT OPERATED CHECK VALVE NG6

Construction: Height = 40 mm  
 Manufacturer: Argo Hytos



Item Code	Note	Spool Type	Valve Size	Flow Rate (l/min)	WP (bar)	Cracking Press (bar)
1254976	2RJV1-06/MC3-030	AB	NG6	60,0	320	3 BAR
1254975	2RJV1-06/MB3-030	B	NG6	60,0	320	3 BAR
1254974	2RJV1-06/MA3-030	A	NG6	60,0	320	3 BAR

## // ACCESSORIES CETOP VALVE

### // DCVNG6SP16 - COILS DIVERTER/NG VALVES

Construction: MR-045 = NG6  
 MR-060 = NG10  
 Manufacturer: Ponar



Item Code	Note	Voltage (V)
1220012	MR-045-0-B-12DC	12V DC
1220050	MR-060-0-12DC	12V DC
1220013	MR-045-0-B-24DC	24V DC
1220014	MR-045-0-B-230AC	230V AC
1220054	MR-060-0-230AC	230V AC
1220055	MR-060-0-24DC	24V DC

### // DCVC23 - COIL DIRECTIONAL CONTROL VALVE NG6

Manufacturer: Argo Hytos



Item Code	Note	Voltage (V)	Elect. Conn.
1254940	C22B-01200E1-4.41NA 16211400	12V DC	Hirschmann
1254941	C22B-01200E3A-4.41NA 24159600	12V DC	AMP
1254942	C22B-01200E12A-4.41NA 24930801	12V DC	Deutch
1254943	C22B-02400E1-18.6NA 16211600	24V DC	Hirschmann
1254944	C22B-02400E3A-18.6NA 24159800	24V DC	AMP
1254945	C22B-02400E12A-18.6NA 19695900	24V DC	Deutch
1254946	C22B-23050E5-1400NA 18849000	230V AC	Hirschmann

REV.1.1

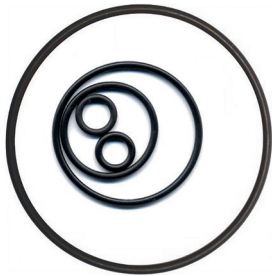
## // ACCCON21 - ELECTRICAL CONNECTOR FOR VALVES/SWITCHES/ TRANSDUCERS

**Construction:** 4900438 = 90 degrees + 5 m cable  
 4900439 = 90 degrees  
 4900440 = straight  
**Manufacturer:** API Pneumatic



Item Code	Note	Voltage (V)	Elect. Conn.	Rectifier	Varistor	LED
4900354	32119	-	Hirschmann	NO	NO	NO
4900429	032119X/ATEX	-	Hirschmann	NO	YES	NO
4900438	KM4-A-B-C2	-	M12	NO	NO	NO
4900440	KM4-S-B	-	M12	NO	NO	NO
4900439	KM4-A-B	-	M12	NO	NO	NO
4900430	32208	115V DC	Hirschmann	NO	YES	YES
4900246	53209TR2M1	230V AC	Hirschmann	YES	YES	YES
4900431	32209	230V AC	Hirschmann	NO	YES	YES
4900353	32207	24V DC	Hirschmann	NO	YES	YES

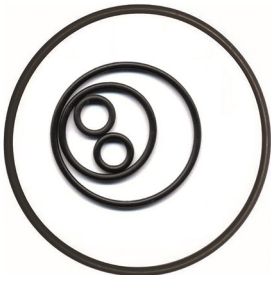
## // HNOJ09000 - O-RING FOR ORFS ADAPTERS AND VALVES NBR - 90SH



Item Code	ID (mm)	T (mm)	Valve Size
1903594	9,2	1,8	NG6
1903590	12,4	1,8	NG10

**// H10J0900 - OR FOR CETOP VALVES -  
FKM- 90SH**

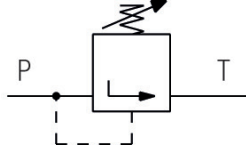
Construction: NG6 = 9,8 mm  
NG10 = 12,4 mm



Item Code	ID (mm)	T (mm)	Valve Size
1906951	9,8	1,8	NG6
1906952	12,4	1,8	NG10

REV.1.1

## // CARTRIDGE VALVES

// PCVRLVC23 - PRESSURE RELIEF  
CARTRIDGE VALVE

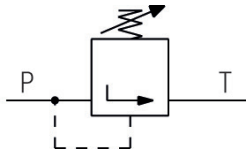
## Ports

P port = bottom

T port = side

Manufacturer: Argo Hytos

Item Code	Note	Flow Rate (l/min)	WP (bar)	Press. Range (bar)	Cavity Size
1254954	SR1A-A2/L6S-A	30,0	350	0 - 63	3/4-16 UNF 2B
1254955	SR1A-A2/L10S-A	30,0	350	0 - 100	3/4-16 UNF 2B
1254956	SR1A-A2/L16S-A	30,0	350	0 - 160	3/4-16 UNF 2B
1254957	SR1A-A2/L25S-A	30,0	350	0 - 250	3/4-16 UNF 2B
1254958	SR1A-A2/L35S-A	30,0	350	0 - 350	3/4-16 UNF 2B
1254949	SR1A-B2/H6S-B1	60,0	420	0 - 63	7/8-14 UNF 2B
1254950	SR1A-B2/H10S-B1	60,0	420	0 - 100	7/8-14 UNF 2B
1254951	SR1A-B2/H16S-B1	60,0	420	0 - 160	7/8-14 UNF 2B
1254952	SR1A-B2/H25S-B1	60,0	420	0 - 250	7/8-14 UNF 2B
1254953	SR1A-B2/H35S-B1	60,0	420	0 - 350	7/8-14 UNF 2B

// PCVRLVC19 - PRESSURE RELIEF  
CARTRIDGE VALVE

## Ports

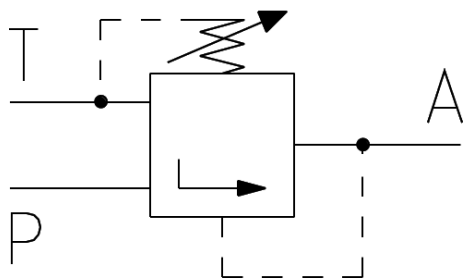
P port = bottom

T port = side

Manufacturer: Atlantic Fluid Tech

Item Code	Note	Flow Rate (l/min)	WP (bar)	Press. Range (bar)	Cavity Size
1253475	CPLN-120-PSNA-HN-S10-N350	120,0	350	140 - 350	7/8-14 UNF 2B
1253476	CPLN-300-PSNA-HN-S16-N350	300,0	350	140 - 350	1 5/16-12 UNF 2B

**// PCVRDVC23 - PRESSURE REDUCING CARTRIDGE VALVE**



**Ports**

P port = lower side

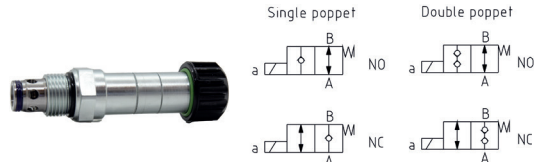
T port = upper side

A port = bottom

**Manufacturer:** Argo Hytos

Item Code	Note	Flow Rate (l/min)	WP (bar)	Press. Range (bar)	Cavity Size
1254959	VRN2-06/S-6T-A	40,0	320	10 - 63	M22x1.5-3
1254960	VRN2-06/S-21T-A	40,0	320	10 - 210	M22x1.5-3
1254961	SP4A-B3/H6S-A	60,0	350	10 - 63	7/8-14 UNF S
1254962	SP4A-B3/H10S-A	60,0	350	10 - 100	7/8-14 UNF C-10-3
1254963	SP4A-B3/H16S-A	60,0	350	10 - 160	7/8-14 UNF C-10-3
1254964	SP4A-B3/H25S-A	60,0	350	10 - 250	7/8-14 UNF C-10-3
1254965	SP4A-B3/H35S-A	60,0	350	10 - 350	7/8-14 UNF C-10-3

**// ECVO0SL23 - ON/OFF SINGLE/ DOUBLE LOCK CARTRIDGE VALVE**



**Construction:** Poppet type

**Ports**

A port = side

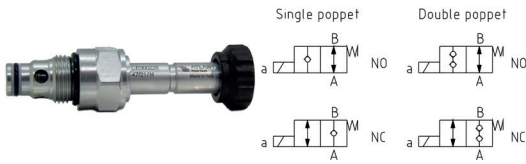
B port = bottom

**Manufacturer:** Argo Hytos

Item Code	Note	Flow Rate (l/min)	WP (bar)	Cavity Size	Notes
1254970	SD1E-A2/H2S5-A	30,0	350	3/4-16 UNF 2B	DOUBLE NC
1254969	SD3E-B2/H2L2M9-A	70,0	420	7/8-14 UNF 2B	SINGLE NC

REV.1.1

### // ECV00SL19 - ON/OFF SINGLE/ DOUBLE LOCK CARTRIDGE VALVE



Construction: Poppet type

Ports

A port = side

B port = bottom

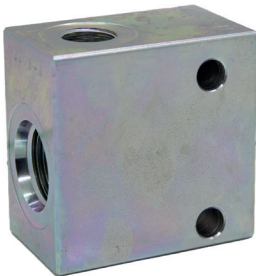
Manufacturer: Atlantic Fluid Tech

Item Code	Note	Flow Rate (l/min)	WP (bar)	Cavity Size	Notes
1253180	CEBN-040-NCFN-05-S08-N350	40,0	350	3/4-16 UNF 2B	SINGLE NC
1253183	CEBN-040-NAFN-06-S08-N350	40,0	350	3/4-16 UNF 2B	SINGLE NO
1253186	CEBN-040-NCFN-31-S08-N350	40,0	350	3/4-16 UNF 2B	DOUBLE NC
1253189	CEBN-040-NAFN-32-S08-N350	40,0	350	3/4-16 UNF 2B	DOUBLE NO
1253181	CEBN-070-NCFN-05-S10-N350	70,0	350	7/8-14 UNF 2B	SINGLE NC
1253184	CEBN-070-NAFN-06-S10-N350	70,0	350	7/8-14 UNF 2B	SINGLE NO
1253187	CEBN-070-NCFN-31-S10-N350	70,0	350	7/8-14 UNF 2B	DOUBLE NC
1253190	CEBN-070-NAFN-32-S10-N350	70,0	350	7/8-14 UNF 2B	DOUBLE NO
1253182	CEBN-180-NCFN-05-S12-N350	180,0	350	1 1/16-12 UNF C-12-3	SINGLE NC
1253185	CEBN-180-NAFN-06-S12-N350	180,0	350	1 1/16-12 UNF C-12-3	SINGLE NO
1253188	CEBN-180-NCFN-31-S12-N350	180,0	350	1 1/16-12 UNF C-12-3	DOUBLE NC
1253191	CEBN-180-NAFN-32-S12-N350	180,0	350	1 1/16-12 UNF C-12-3	DOUBLE NO

### // ECVSM19 - MANIFOLD CARTRIDGE VALVE

Material: Steel

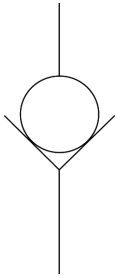
Manufacturer: Atlantic Fluid Tech



Item Code	Note	Dimensions	Cavity Size	Ports Size	Max Contin. Press. (bar)
1253192	LK000018	50X50X30	3/4-16 UNF 2B	1/4"	350
1253193	LK000020	50X50X30	3/4-16 UNF 2B	3/8"	350
1253194	LK000024	60X60X35	7/8-14 UNF 2B	1/2"	350
1253477	LK000047	60X60X40	7/8-14 UNF 2B	3/4"	350
1253195	LK000205	80X75X40	1 1/16-12 UNF 2B	3/4"	350
1253478	LK000154	90X80X50	1 5/16-12 UNF 2B	1"	350

**// CVC11 - CHECK VALVE CARTRIDGE**

Manufacturer: Marchesini



Item Code	Note	Ports Size	Max Contin. Flowrate (l/min)	WP (bar)	Cracking Press (bar)
1255287	VUI1/4"	1/4"	20	350	2,2
1255132	VUI3/8"	3/8"	30	350	1,8
1255288	VUI1/2"	1/2"	50	350	0,7
1255289	VUI3/4"	3/4"	80	350	0,9



REV.1.1

## // ACCESSORIES CARTRIDGE VALVES

## // ECVC19 - COIL ON/OFF VALVE

**General:** For Atlantic Fluid Tech on/off valves  
**Manufacturer:** Atlantic Fluid Tech



Item Code	Note	Voltage (V)	Elect. Conn.
1253196	AB000002	12V DC	Hirschmann
1253199	AB000022	12V DC	Deutch
1253197	AB000003	24V DC	Hirschmann
1253200	AB000023	24V DC	Deutch
1253198	AB000007	220V AC	Hirschmann

## // DCVC223 - COIL CARTRIDGE VALVES

**General:** For Argo Hytos cartridge valves  
**Manufacturer:** Argo Hytos

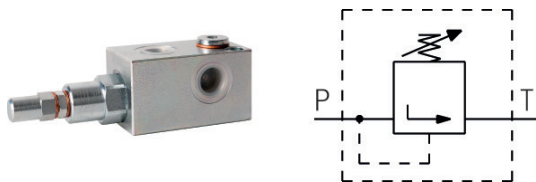


Item Code	Note	Voltage (V)	Elect. Conn.
1254947	C19B-02400E1-20,8NA	24V DC	Hirschmann
1254948	C19B-23050E5-1653NA	230V AC	Deutch

# // IN-LINE VALVES

## // PRV11 - PRESSURE RELIEF VALVE INLINE

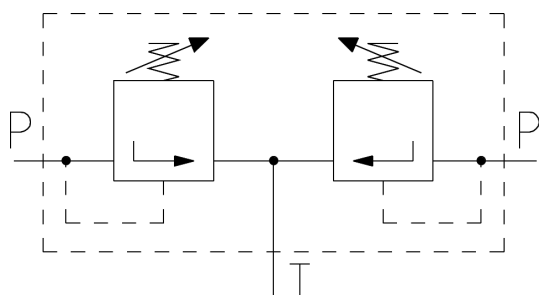
Manufacturer: Marchesini



Item Code	Note	Ports Size	Flow Rate (l/min)	WP (bar)	Press. Range (bar)
1225324	VMP1/4"L	1/4"	30,0	350	10 - 180
1225325	VMP1/4"L	1/4"	30,0	350	80 - 300
1225329	VMP3/8"	3/8"	45,0	350	10 - 180
1225331	VMP3/8"	3/8"	45,0	350	80 - 300
1225321	VMP1/2"	1/2"	70,0	350	10 - 180
1225323	VMP1/2"	1/2"	70,0	350	80 - 300
1225327	VMP3/4"	3/4"	90,0	350	10 - 180
1225328	VMP3/4"	3/4"	90,0	350	80 - 300
1225326	VMP1"	1"	160,0	350	50 - 400

## // PCVRLV219 - DOUBLE PRESSURE RELIEF VALVE INLINE

Construction: Double pressure relief valve/shock valve  
 Manufacturer: Atlantic Fluid Tech

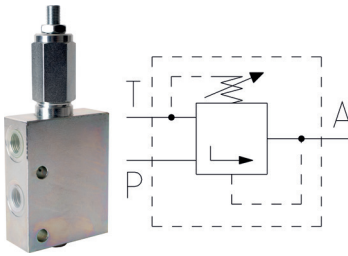


Item Code	Note	Ports Size	Flow Rate (l/min)	WP (bar)	Notes
1254276	MADN-040-LLNR-HN-G12-N200	1/2"	40,0	210	DOUBLE EFFECT

REV.1.1

**// PPRV11 - PRESSURE REDUCING VALVE INLINE**

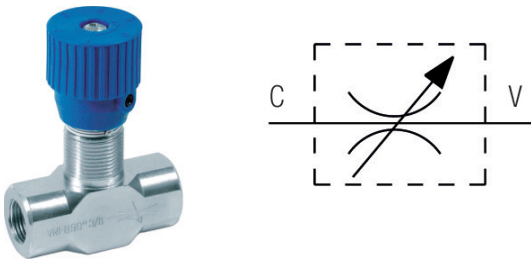
Manufacturer: Marchesini



Item Code	Note	Ports Size	Flow Rate (l/min)	WP (bar)	Press. Range (bar)
1252879	VRP1/2"	1/2"	30,0	350	30 - 165
1225330	VRP3/8"	3/8"	30,0	350	30 - 165

**// FCVTV11 - THROTTLE VALVE INLINE**

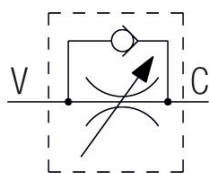
Manufacturer: Marchesini



Item Code	Note	Ports Size	Flow Rate (l/min)	WP (bar)
1219932	VRFB901/4"	1/4"	15,0	350
1219935	VRFB903/8"	3/8"	30,0	350
1219939	VRFB901/2"	1/2"	45,0	350
1222748	VRFB903/4"	3/4"	60,0	280
1225296	VRFB901"	1"	80,0	250

**// CV9011 - 90° THROTTLE / CHECK VALVE INLINE**

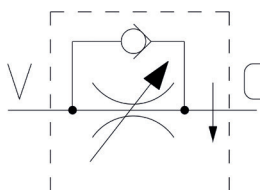
Manufacturer: Marchesini



Item Code	Note	Ports Size	Max Contin. Flowrate (l/min)	WP (bar)	Cracking Press (bar)
1219931	VRFU90°1/4"	1/4"	15	350	0,5
1219933	VRFU90°3/8"	3/8"	30	350	0,5
1219937	VRFU90°1/2"	1/2"	45	350	0,5
1225298	VRFU90°3/4"	3/4"	60	320	0,5
1252856	VRFU901"	1"	110	250	0,5

**// CV90C11 - 90° THROTTLE/CHECK VALVE - COMPENSATED INLINE**

Manufacturer: Marchesini

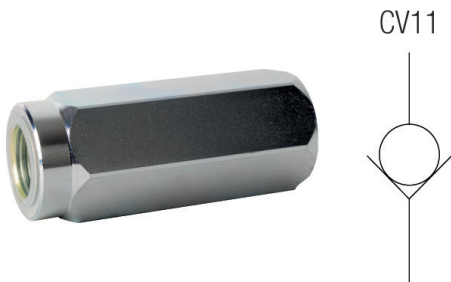


Item Code	Note	Ports Size	Max Contin. Flowrate (l/min)	WP (bar)	Cracking Press (bar)
1225778	VRFU90°1/4"COMPENSATO	1/4"	15	250	0,50 BAR
1225779	VRFU90°3/8"COMPENSATO	3/8"	16	250	0,50 BAR
1225780	VRFU90°1/2"COMPENSATO	1/2"	30	250	0,50 BAR

REV.1.1

**// CV11 - CHECK VALVE**

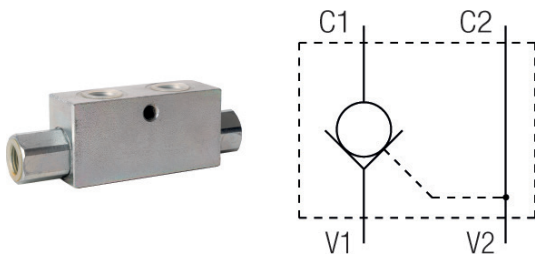
Manufacturer: Marchesini



Item Code	Note	Ports Size	Max Contin. Flowrate (l/min)	WP (bar)	Cracking Press (bar)
1252857	VU1/8"	1/8"	3	350	0,7
1219743	VU1/4"	1/4"	20	350	0,7
1222653	VU3/8"	3/8"	45	350	0,7
1219746	VU1/2"	1/2"	70	350	0,7
1219747	VU3/4"	3/4"	110	350	0,7
1222654	VU1"	1"	160	350	0,7
1219750	VU1 1/4"	1 1/4"	200	300	0,7
1219751	VU1 1/2"	1 1/2"	300	300	0,7
1252858	VU2"	2"	650	350	0,7

**// SPOCV11 - SINGLE PILOT OPERATED CHECK VALVE INLINE**

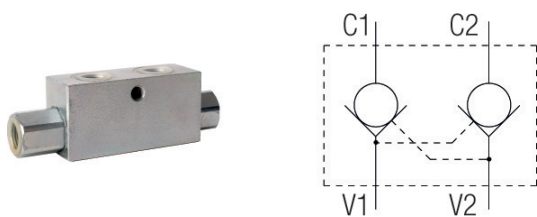
Manufacturer: Marchesini



Item Code	Note	Ports Size	Max Contin. Flowrate (l/min)	WP (bar)	Cracking Press (bar)	Pilot Ratio
1225284	VBPSE1/4"L4VIE	1/4"	20	350	4	1:5.5
1225286	VBPSE3/8"L4VIE	3/8"	35	350	3	1:5.5
1225283	VBPSE1/2"L4VIE	1/2"	50	350	6	1:5

**// DPOCV11 - DOUBLE PILOT OPERATED CHECK VALVE INLINE**

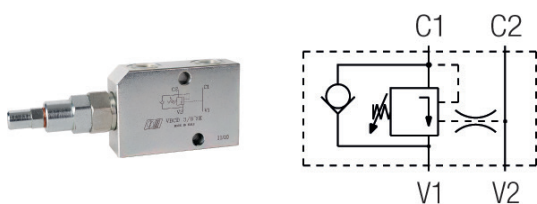
Manufacturer: Marchesini



Item Code	Note	Ports Size	Max Contin. Flowrate (l/min)	WP (bar)	Cracking Press (bar)	Pilot Ratio
1225271	VBPDE1/4"L	1/4"	20	350	4	1:5.5
1225272	VBPDE3/8"L	3/8"	45	350	3	1:5
1225270	VBPDE1/2"L	1/2"	70	350	6	1:5

**// SOC11 - SINGLE OVERCENTER VALVE INLINE**

Manufacturer: Marchesini



Item Code	Note	Ports Size	Max Contin. Flowrate (l/min)	WP (bar)	Press. Setting (bar)	Pilot Ratio	Notes
1225308	VBCD3/8"SE	3/8"	35	350	320	1:3.1	SINGLE EFFECT
1225304	VBCD1/2"SE	1/2"	50	350	320	1:3.1	SINGLE EFFECT
1225306	VBCD3/4"SE	3/4"	105	350	320	1:5.5	SINGLE EFFECT

**// DOC11 - DOUBLE OVERCENTER VALVE INLINE**

Manufacturer: Marchesini

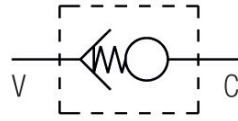


Item Code	Note	Ports Size	Max Contin. Flowrate (l/min)	WP (bar)	Press. Setting (bar)	Pilot Ratio	Notes
1225309	VBCD3/8"DE	3/8"	35	350	320	1:3.1	DOUBLE EFFECT
1225305	VBCD1/2"DE	1/2"	50	350	320	1:3.1	DOUBLE EFFECT
1225307	VBCD3/4"DE	3/4"	105	350	320	1:5.5	DOUBLE EFFECT

REV.1.1

**// FCVHBV11 - HOSE BURST VALVE INLINE**

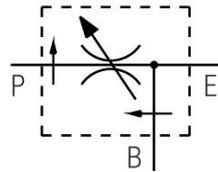
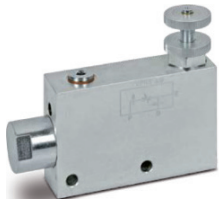
Manufacturer: Marchesini



Item Code	Note	Ports Size	Flow Rate (l/min)	WP (bar)	Notes
1219721	VUBA1/4" + MFF	1/4"	25,0	350	INTERNAL/EXTERNAL THREAD
1219724	VUBA3/8" + MFF	3/8"	50,0	350	INTERNAL/EXTERNAL THREAD
1219727	VUBA3/8" + MMF	3/8"	50,0	350	INTERNAL/INTERNAL THREAD
1219725	VUBA1/2" + MFF	1/2"	80,0	350	INTERNAL/EXTERNAL THREAD
1219728	VUBA1/2" + MMF	1/2"	80,0	350	INTERNAL/INTERNAL THREAD
1219722	VUBA3/4" + MFF	3/4"	140,0	350	INTERNAL/EXTERNAL THREAD
1219729	VUBA3/4" + MMF	3/4"	140,0	350	INTERNAL/INTERNAL THREAD
1227927	VUBA3/8" + MMF	1"	180,0	350	INTERNAL/EXTERNAL THREAD

**// FCVPV11 - PRIORITY VALVE INLINE**

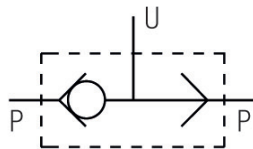
General: Exceeding flow possible to use for second circuit  
 Manufacturer: Marchesini



Item Code	Note	Ports Size	Flow Rate (l/min)	Max Adj. Flow (l/min)	WP (bar)
1225303	VPR33/8"	3/8"	60,0	50	350
1225300	VPR31/2"	1/2"	80,0	60	350
1225302	VPR33/4"	3/4"	120,0	100	350
1225301	VPR31"	1"	200,0	170	350

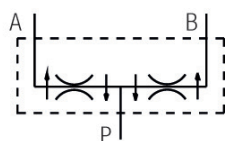
**// FCVSV11 - SHUTTLE VALVE INLINE**

Manufacturer: Marchesini



Item Code	Note	Ports Size	Flow Rate (l/min)	WP (bar)
1225336	VU2P1/4"	1/4"	30,0	450
1225338	VU2P3/8"	3/8"	45,0	450
1225335	VU2P1/2"	1/2"	70,0	450
1225337	VU2P3/4"	3/4"	110,0	350

**// FCVFD11 - FLOW DIVIDER INLINE**

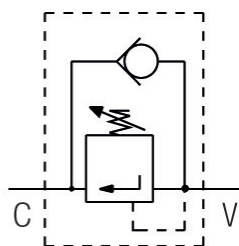
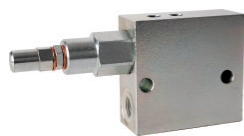


**General:** Equal distribution (50-50%)  
Do not exceed flow rate.  
**Manufacturer:** Marchesini

Item Code	Note	F1	Flow Rate (l/min)	WP (bar)
1252869	DFL1-3	3/8-19	3,0	250
1252870	DFL3-6	3/8-19	6,0	250
125292	DFL6-10	3/8-19	10,0	300
1225293	DFL10-20	3/8-19	20,0	300
1252871	DFL20-32	3/8-19	32,0	250
1225290	DFL25-40	1/2-14	40,0	300
1225291	DFL40-60	1/2-14	60,0	300

**// PSV11 - SEQUENCE VALVE INLINE**

**Manufacturer:** Marchesini



Item Code	Note	Ports Size	Flow Rate (l/min)	WP (bar)	Press. Range (bar)
1225334	VS2C3/8"	3/8"	35,0	350	30 - 180
1225332	VS2C1/2"	1/2"	70,0	350	30 - 180
1225333	VS2C3/4"	3/4"	110,0	400	30 - 180



REV.1.1

## // CETOP/NG MANIFOLDS

## // CMAM12 - MANIFOLD NG6/NG10

Material: Aluminium  
 Manufacturer: OMT S.p.A.



Item Code	Note	Dimensions	N. of positions	Valve Size	Max Contin. Press. (bar)	Notes
1252731	BSA06BLL	110X65X45	1	NG6	250	3/8"
1252729	BSA06BLLX-20	110X70X65	1	NG6	250	3/8" PRESS.RELIEF 30-210B
1252749	BMA06P2L2	120X70X70	2	NG6	250	3/8"
1252733	BMA06P2L2X-20	155X70X70	2	NG6	250	3/8", 1/2" PRESS.REL. 30-210B
1252750	BMA06P2L3	170X70X70	3	NG6	250	3/8"
1252734	BMA06P2L3X-20	205X70X70	3	NG6	250	3/8", 1/2" PRESS.REL. 30-210B
1252751	BMA06P2L4	220X70X70	4	NG6	250	3/8"
1252735	BMA06P2L4X-20	255X70X70	4	NG6	250	3/8", 1/2" PRESS.REL. 30-210B
1252752	BMA06P2L5	270X70X70	5	NG6	250	3/8"
1252736	BMA06P2L5X-20	305X70X70	5	NG6	250	3/8", 1/2" PRESS.REL. 30-210B
1252753	BMA06P2L6	320X70X70	6	NG6	250	3/8"
1252737	BMA06P2L6X-20	355X70X70	6	NG6	250	3/8", 1/2" PRESS.REL. 30-210B
1252754	BMA06P2L7	370X70X70	7	NG6	250	3/8"
1252738	BMA06P2L7X-20	405X70X70	7	NG6	250	3/8", 1/2" PRESS.REL. 30-210B
1252755	BMA06P2L8	420X70X70	8	NG6	250	3/8"
1252739	BMA06P2L8X-20	455X70X70	8	NG6	250	3/8", 1/2" PRESS.REL. 30-210B
1252756	BMA06P2L9	470X70X70	9	NG6	250	3/8"
1252740	BMA06P2L9X-20	505X70X70	9	NG6	250	3/8", 1/2" PRESS.REL. 30-210B
1252741	BMA10P3L2X-20	175X95X95	2	NG10	250	1/2", 3/4" PRESS.REL. 80-250B
1252742	BMA10P3L3X-20	250X95X95	3	NG10	250	1/2", 3/4" PRESS.REL. 80-250B
1252743	BMA10P3L4X-20	325X95X95	4	NG10	250	1/2", 3/4" PRESS.REL. 80-250B
1252744	BMA10P3L5X-20	400X95X95	5	NG10	250	1/2", 3/4" PRESS.REL. 80-250B
1252745	BMA10P3L6X-20	475X95X95	6	NG10	250	1/2", 3/4" PRESS.REL. 80-250B
1252746	BMA10P3L7X-20	550X95X95	7	NG10	250	1/2", 3/4" PRESS.REL. 80-250B
1252747	BMA10P3L8X-20	625X95X95	8	NG10	250	1/2", 3/4" PRESS.REL. 80-250B
1252748	BMA10P3L9X-20	700X95X95	9	NG10	250	1/2", 3/4" PRESS.REL. 80-250B
1252732	BSA10DLL	125X100X50	1	NG10	250	3/4"
1252730	BSA10DLLX-20	125X100X69	1	NG10	250	3/4" PRESS.RELIEF 80-250B

**// CC3MSM23 - SUBPLATE/BLANKING  
PLATE NG**

Material: Steel  
Manufacturer: Argo Hytos

Item Code	Note	Dimensions	Valve Size	Cavity Size	Ports Size	Max Contin. Press. (bar)	Notes
1254998	28063600	73,5X45X50	NG6	3/4-16 UNF 2B	-	350	MANIFOLD CET.3 A2 STOP A&B
1254985	29527600	73,5X45X50	NG6	3/4-16 UNF 2B	-	350	MANIFOLD CET.3 A2 P->T
1254997	30677500	73,5X45X50	NG6	3/4-16 UNF 2B	-	350	MANIFOLD CET.3 A2 STOP B
1254996	28063500	73,5X45X50	NG6	3/4-16 UNF 2B	-	350	MANIFOLD CET.3 A2 STOP A
1254986	29513200	73,5X45X50	NG6	3/4-16 UNF 2B	-	350	MANIFOLD CET.3 A2 A->T
1254987	29527400	73,5X45X50	NG6	3/4-16 UNF 2B	-	350	MANIFOLD CET.3 A2 B->T
1254988	30122200	73,5X45X50	NG6	3/4-16 UNF 2B	-	350	MANIFOLD CET.3 A2 B<- ->T
1254989	28591400	73,5X45X50	NG6	3/4-16 UNF 2B	-	350	MANIFOLD CET.3 A2 A&B->T
1254991	16002600	86X45X50	NG6	M22x1.5-3	-	350	MANIFOLD CET.3 PRESS.RED. B
1254981	30003800	86X45X50	NG6	7/8-14 UNF 2B	-	350	MANIFOLD CET.3 B2 A->T
1254984	30755800	86X45X50	NG6	7/8-14 UNF 2B	-	350	MANIFOLD CET.3 B2 A&B->T
1254983	28064300	86X45X50	NG6	7/8-14 UNF 2B	-	350	MANIFOLD CET.3 B2 B<- ->T
1254982	30021200	86X45X50	NG6	7/8-14 UNF 2B	-	350	MANIFOLD CET.3 B2 B->T
1254980	30003600	86X45X50	NG6	7/8-14 UNF 2B	-	350	MANIFOLD CET.3 B2 P->T
1254994	30708100	86X45X50	NG6	7/8-14 UNF 2B	-	350	MANIFOLD CET.3 B2 STOP B
1254993	30021500	86X45X50	NG6	7/8-14 UNF 2B	-	350	MANIFOLD CET.3 B2 STOP A
1254992	30786400	86X45X50	NG6	7/8-14 UNF C-10-3	-	350	MANIFOLD CET.3 PRESS.RED. P->P
1254990	16002400	86X45X50	NG6	M22x1.5-3	-	350	MANIFOLD CET.3 PRESS.RED. A
1254995	30119500	86X45X50	NG6	7/8-14 UNF 2B	-	350	MANIFOLD CET.3 B2 STOP A&B
1255001	41047200	94.5X45X53	NG6	7/8-14 UNF S	-	350	MANIFOLD CET.3 BP3 A<- ->B
1254999	41072900	94.5X45X53	NG6	7/8-14 UNF S	-	350	MANIFOLD CET.3 BP3 A-> B
1255000	41054200	94.5X45X53	NG6	7/8-14 UNF S	-	350	MANIFOLD CET.3 BP3 B-> 1
1255290	DK1-04/32-2	40X35X10	NG4	-	-	350	BLANKING PLATE NG4
1255291	DK1-06/32-2	65X45X12	NG6	-	-	350	BLANKING PLATE NG6
1255293	DP3-06/35-A7	95X58X25	NG6	-	1/4"	350	SUBPLATE 1 STAT NG6 1/4"
1255294	DP3-06/35-B8	105X80X30	NG6	-	3/8"	350	SUBPLATE 1 STAT NG6 3/8"
1255292	DK1-10/32-2	90X70X19,5	NG10	-	-	350	BLANKING PLATE NG10

REV.1.1

## // CARTRIDGE MANIFOLDS

## // ECVSM19 - MANIFOLD CARTRIDGE VALVE

Material: Steel

Manufacturer: Atlantic Fluid Tech



Item Code	Note	Dimensions	Cavity Size	Ports Size	Max Contin. Press. (bar)
1253192	LK000018	50X50X30	3/4-16 UNF 2B	1/4"	350
1253193	LK000020	50X50X30	3/4-16 UNF 2B	3/8"	350
1253194	LK000024	60X60X35	7/8-14 UNF 2B	1/2"	350
1253477	LK000047	60X60X40	7/8-14 UNF 2B	3/4"	350
1255283	LK000027	60X65X35	7/8-14 UNF C-10-3	3/8"	350
1255284	LK000131	70X70X35	7/8-14 UNF C-10-3	1/2"	350
1255285	LK000100	80X100X40	1 1/16-12 UNF C-12-3	1/2"	350
1255286	LK000294	80X100X40	1 1/16-12 UNF C-12-3	3/4"	350
1253195	LK000205	80X75X40	1 1/16-12 UNF 2B	3/4"	350
1253478	LK000154	90X80X50	1 5/16-12 UNF 2B	1"	350

## // CUSTOMIZED MANIFOLDS

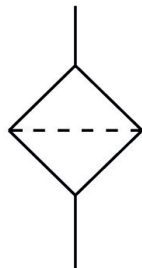
We can supply you with customized manifolds from our own factory.

TMF makes manifolds in both steel and aluminium, and we have different surface treatments that suits your needs.



## // HOUSING RETURN FILTERS

### // RFOMTF12 - RETURN FILTER HOUSING



**Construction:** Filter element buys separate.

Housing Element  
 OMTF091 = CR091  
 OMTF111 = CR111  
 OMTF112 = CR112  
 OMTF113 = CR113  
 OMTF171 = CR171  
 OMTF221 = CR221

**Manufacturer:** OMT S.p.A.

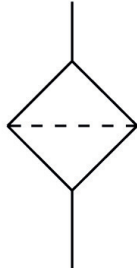
Item Code	Note	Inlet Thread Size	Material - Case
1220267	OMTF091NA	1/2"	Plastics & Aluminium
1222427	OMTF111NA	1/2"	Plastics & Aluminium
1252671	OMTF112NA1	3/4"	Plastics & Aluminium
1220268	OMTF113NA2	1"	Plastics & Aluminium
1220269	OMTF171NA1	1 1/4"	Plastics & Aluminium
1222428	OMTF221NA1	1 1/2"	Plastics & Aluminium

REV.1.1

## // ELEMENT RETURN FILTERS

// RFOMTFE12 - RETURN FILTER  
ELEMENT**General:** Glass fibre = absolute filtration

Cellulose fibre = nominell filtration

**Manufacturer:** OMT S.p.A.

Item Code	Note	Filtration Grade (µm)	Flow Rate (l/min)	Filtration Material
1220326	CR091C10R	10	45,0	Cellulose Fibre
1252672	CR091F06R	5	20,0	Glass Fibre
1220330	CR091F10R	10	25,0	Glass Fibre
1220327	CR111C10R	10	80,0	Cellulose Fibre
1252673	CR111F06R	5	35,0	Glass Fibre
1222437	CR111F10R	10	40,0	Glass Fibre
1220324	CR112C10R	10	120,0	Cellulose Fibre
1252674	CR112F06R	5	40,0	Glass Fibre
1222438	CR112F10R	10	55,0	Glass Fibre
1252677	CR113C10R	10	140,0	Cellulose Fibre
1252675	CR113F06R	5	70,0	Glass Fibre
1252678	CR113F10R	5	55,0	Glass Fibre
1222435	CR171C10R	10	240,0	Cellulose Fibre
1220328	CR171F10R	10	180,0	Glass Fibre
1220325	CR221C10R	10	300,0	Cellulose Fibre
1252676	CR221F06R	5	150,0	Glass Fibre
1220329	CR221F10R	10	200,0	Glass Fibre

## // ACCESSORIES RETURN FILTERS

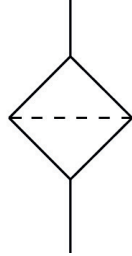
// PFHPMACC12 - FILTER  
ACCESSORIES

Manufacturer: OMT S.p.A.

Item Code	Note	Type	Notes
1252698	F10-001	Filter indicator	VISUAL 0-2,5 BAR
1252700	PE1	Filter indicator	ELECTRIC NO
1252701	PE2	Filter indicator	ELECTRIC NC
1252702	PE3	Filter indicator	ELECTRIC CHANGEOVER
1252699	PV1	Filter indicator	VISUAL 0-12 BAR

REV.1.1

## // HOUSING SPIN-ON FILTER

// RFOMTI12 - SPIN-ON FILTER  
HOUSING**Construction:** Max working pressure: 10 bar

Suction by-pass 0,25 bar

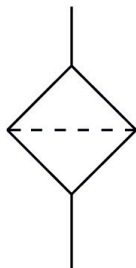
Return by-pass: 1,7 bar

**General:** Filter buys separate**Manufacturer:** OMT S.p.A.

Item Code	Note	Inlet Thread Size	Material - Case
1220277	T05VOR-I	3/4"	Aluminium
1220278	T10VOR-I	1 1/4"	Aluminium

## // ELEMENT SPIN-ON FILTERS

### // RFOMTIELE12 - SPIN-ON FILTER ELEMENT



**Construction:** CS05: Length = 145 mm, use housing T05VOR-I  
 CS06: Length = 190 mm, use housing T05VOR-I  
 CS10: Length = 180 mm, use housing T10VOR-I  
 CS15: Length = 226 mm, use housing T10VOR-I  
**Manufacturer:** OMT S.p.A.

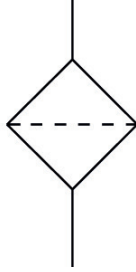
Item Code	Note	Inlet Thread Size	Filtration Grade (µm)	Flow Rate (l/min)	Filtration Material
1220286	CS05ANR	3/4"	10	70,0	Cellulose Fibre
1220288	CS05BNR	3/4"	25	80,0	Cellulose Fibre
1252692	CS05NNR	3/4"	5	35,0	Inorganic Fibre
1228494	CS06ANR	3/4"	10	90,0	Cellulose Fibre
1228495	CS06BNR	3/4"	25	100,0	Cellulose Fibre
1252693	CS06NNR	3/4"	5	50,0	Inorganic Fibre
1220289	CS10ANR	1 1/4"	10	180,0	Cellulose Fibre
1220291	CS10BNR	1 1/4"	25	200,0	Cellulose Fibre
1252694	CS10NNR	1 1/4"	5	90,0	Inorganic Fibre
1228497	CS15ANR	1 1/4"	10	220,0	Cellulose Fibre
1228498	CS15BNR	1 1/4"	25	250,0	Cellulose Fibre
1252695	CS15CNR	1 1/4"	50	270,0	Inorganic Fibre
1251536	CS15NNR	1 1/4"	5	120,0	Cellulose Fibre



REV.1.1

## // HOUSING PRESSURE FILTERS

## // PFHPM12 - PRESSURE FILTER HOUSING



**General:** Filter element buys separate.  
Max pressure 420 bar

Filter element collapse pressure = 20 bar  
By-pass opens at 6 bar

Housing Element  
HPM281 = CHP281  
HPM282 = CHP282  
HPM283 = CHP283  
HPM421 = CHP421  
HPM422 = CHP422

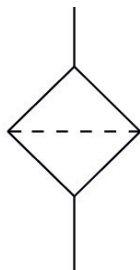
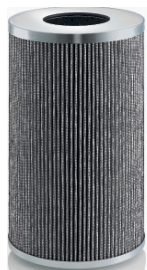
**Manufacturer:** OMT S.p.A.

Item Code	Note	Inlet Thread Size	Material - Case
1252688	HPM281XNR	3/4"	Steel (Carbon Steel)
1252689	HPM282XNR	3/4"	Steel (Carbon Steel)
1252686	HPM283XNR	3/4"	Steel (Carbon Steel)
1252690	HPM421XNR	3/4"	Steel (Carbon Steel)
1252691	HPM422XNR1	1"	Steel (Carbon Steel)

## // ELEMENT PRESSURE FILTERS

### // PFHPMELE12 - PRESSURE FILTER ELEMENT

Construction: Element collapse pressure = 20 bar  
 Manufacturer: OMT S.p.A.



Item Code	Note	Filtration Grade (µm)	Flow Rate (l/min)	Filtration Material
1252679	CHP281F06XN	5	20,0	Glass Fibre
1232006	CHP281F10XN	10	30,0	Glass Fibre
1252680	CHP282F06XN	5	40,0	Glass Fibre
1252683	CHP282F10XN	10	55,0	Glass Fibre
1252681	CHP283F06XN	5	50,0	Glass Fibre
1252685	CHP283F10XN	10	70,0	Glass Fibre
1232008	CHP421F06XN	10	80,0	Glass Fibre
1252684	CHP421F10XN	10	80,0	Glass Fibre
1252682	CHP422F06XN	5	113,0	Glass Fibre
1232010	CHP422F10XN	10	135,0	Glass Fibre

REV.1.1

## // ACCESSORIES PRESSURE FILTERS

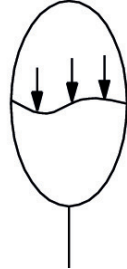
### // PFHPMACC12 - FILTER ACCESSORIES

Manufacturer: OMT S.p.A.

Item Code	Note	Type	Notes
1252696	DE500	Filter indicator	VISUAL, ELECTRIC CHANGE OVER
1252697	DR500	Filter indicator	VISUAL, ELECTRIC REED
1222420	DV500	Filter indicator	VISUAL

## // ACCUMULATORS

### // MAAMW20 - MEMBRANE ACCUMULATOR



**Construction:** Connection gas side: M28x1,5

**General:** According to PED directive

C2 = 1/2" BSPP Female thread

E2 = 1/2" BSPP Female thread + M33x1,5 Male thread

Item Code	Note	Volume (l)	WP (bar)	Inlet Thread Size	OD Tube (mm)
1252642	AMW-0.07-P-250-C-C2-8-M	0,07	250	1/2-14	64,0
1251904	AMW-0.16-P-250-C-C2-8-M	0,16	250	1/2-14	75,0
1251905	AMW-0.32-P-210-C-C2-8-M	0,32	210	1/2-14	92,5
1251819	AMW-0.50-P-210-C-C2-8-M	0,50	210	1/2-14	105,0
1252643	AMW-0.50-P-210-C-E3-8-M	0,50	210	1/2-14	105,0
1251752	AMW-0.75-P-210-C-C2-8-M	0,75	210	1/2-14	118,0
1252645	AMW-0.75-P-210-C-E3-8-M	0,75	210	1/2-14	118,0
1252646	AMW-0.75-P-350-C-C2-8-M	0,75	350	1/2-14	125,5
1252647	AMW-0.75-P-350-C-E3-8-M	0,75	350	1/2-14	125,5
1251906	AMW-1.00-P-250-C-C2-8-M	1,00	250	1/2-14	136,0
1252650	AMW-1.40-P-160-C-E3-8-M	1,40	160	1/2-14	150,0
1252651	AMW-1.40-P-210-C-E3-8-M	1,40	210	1/2-14	155,0
1252652	AMW-1.40-P-250-C-C2-8-M	1,40	250	1/2-14	157,0
1252655	AMW-2.00-P-250-C-C2-8-M	2,00	250	3/4-14	159,0
1252657	AMW-2.80-P-250-C-C2-8-M	2,80	250	3/4-14	170,5
1252658	AMW-3.50-P-250-C-C2-8-M	3,50	250	3/4-14	174,0

REV.1.1

## // ACCESSORIES MEMBRANE ACCUMULATORS

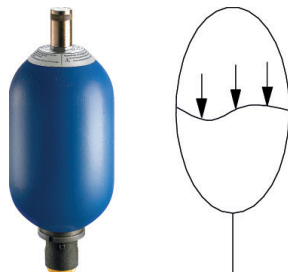
// MAACC12 - MEMBRANE  
ACCUMULATOR MOUNTING CLAMPApplication: Clamp for membrane accumulator  
Manufacturer: OMT S.p.A.

Item Code	Note	OD Tube (mm)
1252628	COLLARE-C-62/65	65,0
1252623	COLLARE-C-73/77	77,0
1252624	COLLARE-C-89/92	92,0
1252625	COLLARE-C-100/106	106,0
1252626	COLLARE-C-121/129	129,0
1252627	COLLARE-C-133/142	142,0
1252629	COLLARE-C-143/151	151,0
1252630	COLLARE-C-152/159	159,0
1252631	COLLARE-C-167/175	175,0

# // ACCUMULATOR

## // BAA51C12 - BLADDER ACCUMULATOR

**General:** According to PED directive  
 BSPP female thread  
**Manufacturer:** OMT S.p.A.



Item Code	Note	Volume (l)	WP (bar)	Inlet Thread Size	OD Tube (mm)
1252607	A-51-E001NK-DC	1,00	380	3/4-14	115,0
1252608	A-51-E02,5NK-CC	2,50	350	1 1/4-11	115,0
1252609	A-51-E004NK-CC	4,00	350	1 1/4-11	169,0
1252632	A-51-E005NK-CC	5,00	350	1 1/4-11	115,0
1252610	A-51-E006NK-CC	6,00	350	1 1/4-11	170,0
1252633	A-51-E010NK-AC	10,00	350	2	219,0
1252611	A-51-E020NK-AC	20,00	350	2	219,0
1252634	A-51-E024,5NK-AC	24,50	350	2	219,0
1252635	A-51-E032NK-AC	32,00	350	2	219,0
1252636	A-51-E050NK-AC	50,00	350	2	219,0

REV.1.1

## // ACCESSORIES BLADDER ACCUMULATORS

## // BASSACCA12 - BLADDER ACCUMULATOR SPARE

Manufacturer: OMT S.p.A.



Item Code	Note	Volume (l)	WP (bar)	OD Tube (mm)
1252612	SACCA-IMB-1-22NK	1,00	380	115,0
1252613	SACCA-IMB-2,5-22NK	2,50	350	115,0
1252614	SACCA-IMB-4-22NK	4,00	350	169,0
1252637	SACCA-IMB-5-22NK	5,00	350	115,0
1252615	SACCA-IMB-6-22NK	6,00	350	170,0
1252638	SACCA-IMB-10-22NK	10,00	350	219,0
1252616	SACCA-IMB-20-22NK	20,00	350	219,0
1252639	SACCA-IMB-24,5-22NK	24,50	350	219,0
1252640	SACCA-IMB-32-22NK	32,00	350	219,0
1252641	SACCA-IMB-50-22NK	50,00	350	219,0

## // BAACC12 - BLADDER ACCUMULATOR MOUNTING CLAMP

Application: Clamp for bladder accumulator

Manufacturer: OMT S.p.A.

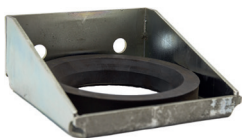


Item Code	Note	OD Tube (mm)
1252617	MENSOLA-C-89	115,0
1252618	MENSOLA-C-108	170,0
1252619	MENSOLA-C-159	219,0

## // BAAMC12 - BLADDER ACCUMULATOR MOUNTING FOOT

Application: Mounting foot for bladder accumulator

Manufacturer: OMT S.p.A.



Item Code	Note	OD Tube (mm)
1252620	COLLARE-C-114	115,0
1252621	COLLARE-C-169	170,0
1252622	COLLARE-C-219	219,0

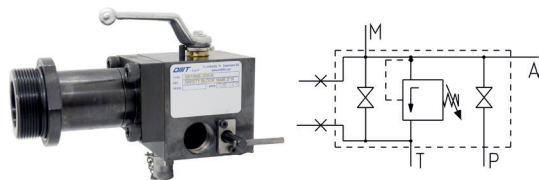
# // ACCESSORIES ACCUMULATORS

## // BAAA12 - ACCUMULATOR ACCESSORIES

**Application:** Safety blocks for accumulators according to PED directive.

Needed when  $P \times V > 1000$

**Manufacturer:** OMT S.p.A.



Item Code	Note	WP (bar)	Notes
1255491	8206-82061230-210	210	PRESSURE REILEF VALVE SB16
1255492	8206-82061320-250	250	PRESSURE REILEF VALVE SB16
1255493	8206-82061450-330	330	PRESSURE REILEF VALVE SB16
1255488	8207-82071720-210	210	PRESSURE REILEF VALVE SB24
1255489	8207-82071740-250	250	PRESSURE REILEF VALVE SB24
1255490	8207-82071850-330	330	PRESSURE REILEF VALVE SB24
1252663	SB16ME-034-N		SAFETYBLOCK ACC <10L 3/4"
1252662	SB16ME-114-N		SAFETYBLOCK ACC <10L 3/4"
1252660	SB16ME-200-N		SAFETYBLOCK ACC 10-50L 3/4"
1252661	SB24ME-200-N		SAFETYBLOCK ACC 10-50L 1 1/4"

## // BAAA112 - CHARGING KIT ACCUMULATORS

**General:** Complete charging kit for accumulators

Connection only for Nordic/German gas bottles

**Manufacturer:** OMT S.p.A.



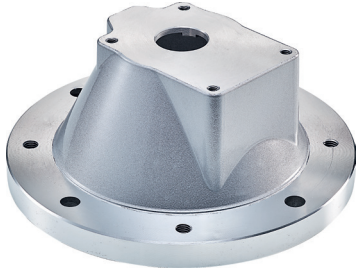
Item Code	Note	Notes
1252659	VGUKIT-DE-25-250	CHARGING KIT ACC



REV.1.1

## // BELL HOUSES

## // PPBLSS12 - BELLHOUSE LS



**Termination:** For gear pumps with standard Euro flange

**General:** Motor power range = 4 poles electric motor, B5 flange

**Manufacturer:** OMT S.p.A.

Item Code	Note	Group	Motor Power Range (kw)
1232057	LS161	1,0	0.25 - 0.37
1228568	HONDA GR1 3,5-5,5 HK	1,0	3 - 5.5
1224052	LS201	1,0	0.55 - 1.5
1232059	HONDA GR1 7-18 HK	1,0	7 - 18
1222835	LS203	2,0	1.1 - 1.5
1224055	LS350	2,0	11 - 22
1222836	LS252	2,0	2.2 - 4
1222837	LS300	2,0	5.5 - 7.5
1228569	HONDA GR2 7-18 HK	2,0	7 - 18
1232058	LS352	3,0	11 - 22
1224053	LS255	3,0	2.2 - 4
1224054	LS302	3,0	5.5 - 7.5

## // COUPLINGS

### // PPSCS12 - SHAFT COUPLING MOTOR



**Application:** ND4x series = R42  
 ND6x series = R62  
 ND8x series = R82  
 ND1xx series = R103  
**General:** Coupling motor  
**Manufacturer:** OMT S.p.A.

Item Code	Note	OD Shaft Coupl. (mm)	Motor Power Range (kw)	material coupling
2702888	ND48B	14,00	0.25 - 0.37	Aluminium
2702889	ND65A	19,00	0.55 - 0.75	Aluminium
2702890	ND65B	24,00	1.1 - 1.5	Aluminium
2702892	ND86A	28,00	2.2 - 4	Aluminium
2702891	ND65C	28,00	2.2 - 4	Aluminium
2702893	ND86B	38,00	5.5 - 7.5	Aluminium
2702894	ND108B	42,00	11 - 15	Aluminium
2703192	ND108C	48,00	18.5 - 22	Aluminium

### // PPSCSP12 - SHAFT COUPLING PUMP



**Application:** ND4x series = R42  
 ND6x series = R62  
 ND8x series = R82  
 ND1xx series = R103  
**General:** Coupling pump  
**Manufacturer:** OMT S.p.A.

Item Code	Note	Group	material coupling
2702896	ND65PU1P	1,0	Aluminium
2702939	ND48PU1P	1,0	Aluminium
2702895	ND65P2	2,0	Aluminium
2702898	ND82P2	2,0	Aluminium
2702899	ND108P2	2,0	Aluminium
2702897	ND86P3U	3,0	Aluminium
2702940	ND108P3U	3,0	Aluminium

REV.1.1

## // PPSCSR12 - SHAFT COUPLING FLEXIBLE ELEMENT



**Application:** ND4x series = R42

ND6x series = R62

ND8x series = R82

ND1xx series = R103

**General:** Flexible element for coupling

**Manufacturer:** OMT S.p.A.

Item Code	Note	OD Shaft Coupl. (mm)	Material Flex. Elem.
2702884	R-42	19,00	NBR
2702885	R-62	29,00	NBR
2702886	R-82	31,50	NBR
2702887	R-103	42,00	NBR

# // TANKS

## // ATCPS12 - TANKS INDUSTRY VERSION

Manufacturer: OMT S.p.A.



Item Code	Note	Volume (l)	Material
1222873	CP10	10,00	Aluminium
1252664	CP16M	16,00	Aluminium
1222874	CP25M	25,00	Aluminium
1222875	CP55	55,00	Aluminium
1232060	CP75	75,00	Aluminium

## // ATCPS12\_L - TANKS INDUSTRY LID

Manufacturer: OMT S.p.A.

Item Code	Note	Volume (l)	Material
1252666	CCP10M	10,00	Steel (Carbon Steel)
1222876	CCP16	16,00	Steel (Carbon Steel)
1222877	CCP25M	25,00	Steel (Carbon Steel)
1222878	CCP55	55,00	Steel (Carbon Steel)

## // ATCPS12\_S - TANKS INDUSTRY SEAL

Manufacturer: OMT S.p.A.

Item Code	Note	Volume (l)	Material - Seal
1222870	GCP10	10,00	Paper
1252665	GCP16	16,00	Paper
1222871	GCP25	25,00	Paper
1222872	GS55-75	55,00	Paper

REV.1.1

## // ATFDS12 - TANKS MOBILE VERSION

**General:** Complete with return filter, oil level gauge and filling cap

**Manufacturer:** OMT S.p.A.

Item Code	Note	Volume (l)	Material
1252667	FD27-112C10NA2	10,00	Steel (Carbon Steel)
1252668	FD45-112C10NA2	27,00	Steel (Carbon Steel)
1252669	FD75-112C10NA2	45,00	Steel (Carbon Steel)
1252670	FD130-112C10NA2	75,00	Steel (Carbon Steel)

## // ACCESSORIES RESERVOIR EQUIPMENT

### // FCTRS12 - FILLING CAP TRM



**Construction:** Boltcircle:

TR-1 diameter 41x 3 holes (5 mm)

TR-2 & TR-3 diameter 73 x 6 holes (5 mm)

**General:** Including air breather filter, 10 my filtration

Length:

TR-1S1 = 66 mm

TR-1S2 = 95 mm

TR-1S3 = 150 mm

**Manufacturer:** OMT S.p.A.

Item Code	Note	Notes
1252703	TR-1S1	250 L/MIN, 3 MOUNTING HOLES
1252704	TR-2S1	700 L/MIN, 6 MOUNTING HOLES
1252705	TR-3S1	700 L/MIN, 6 MOUNTING HOLES

### // LGLVS12 - LEVEL GAUGE LGN/LGNT



**General:** LGN: excluding thermometer

LGNT: including thermometer

Serie 1 = M10

Serie 2 & 3 = M12

**Manufacturer:** OMT S.p.A.

Item Code	Note	Material	Level Range	Notes
1222845	LGN1	Aluminium	76	FLAT TANK SEAL
1222855	LGN1T	Aluminium	76	FLAT TANK SEAL
1222843	LGN2	Aluminium	127	FLAT TANK SEAL
1222854	LGN2T	Aluminium	127	FLAT TANK SEAL
1222846	LGN3	Aluminium	254	FLAT TANK SEAL
1222856	LGN3T	Aluminium	254	FLAT TANK SEAL

REV.1.1

## // PRESSURE GAUGES

## // R2YM63R

Stainless Steel 304 Glycerine Gauge DN63  
Lower Mount

Item Code	Note	Pressure Range (bar)	Conn. Position	Gauge Size	Ports Size
1222456	M635RL-1/0	-1 +0 Bar	Lower Mount	2"1/2 (63 mm)	1/4"
1210118	M635RL0/2.5	0 +2,5 Bar	Lower Mount	2"1/2 (63 mm)	1/4"
1222455	M635RL0/4	0 +4 Bar	Lower Mount	2"1/2 (63 mm)	1/4"
1210081	M635RL0/6	0 +6 Bar	Lower Mount	2"1/2 (63 mm)	1/4"
1210076	M635RL0/10	0 +10 Bar	Lower Mount	2"1/2 (63 mm)	1/4"
1210073	M635RL0/16	0 +16 Bar	Lower Mount	2"1/2 (63 mm)	1/4"
1210074	M635RL0/25	0 +25 Bar	Lower Mount	2"1/2 (63 mm)	1/4"
1210077	M635RL0/40	0 +40 Bar	Lower Mount	2"1/2 (63 mm)	1/4"
1210082	M635RL0/60	0 +60 Bar	Lower Mount	2"1/2 (63 mm)	1/4"
1210065	M635RL0/100	0 +100 Bar	Lower Mount	2"1/2 (63 mm)	1/4"
1210067	M635RL0/160	0 +160 Bar	Lower Mount	2"1/2 (63 mm)	1/4"
1210068	M635RL0/250	0 +250 Bar	Lower Mount	2"1/2 (63 mm)	1/4"
1210069	M635RL0/400	0 +400 Bar	Lower Mount	2"1/2 (63 mm)	1/4"
1210070	M635RL0/600	0 +600 Bar	Lower Mount	2"1/2 (63 mm)	1/4"
1232050	M635RL0/1000	0 +1000 Bar	Lower Mount	2"1/2 (63 mm)	1/4"

// R2YM10R

**Stainless Steel 304 Glycerine Gauge DN100  
Lower Mount**



Item Code	Note	Pressure Range (bar)	Conn. Position	Gauge Size	Ports Size
1222449	M105RL0/4	0 +4 Bar	Lower Mount	4" (100 mm)	1/2"
1222452	M105RL0/6	0 +6 Bar	Lower Mount	4" (100 mm)	1/2"
1222444	M105RL0/10	0 +10 Bar	Lower Mount	4" (100 mm)	1/2"
1222445	M105RL0/16	0 +16 Bar	Lower Mount	4" (100 mm)	1/2"
1222447	M105RL0/25	0 +25 Bar	Lower Mount	4" (100 mm)	1/2"
1222448	M105RL0/40	0 +40 Bar	Lower Mount	4" (100 mm)	1/2"
1222450	M105RL0/60	0 +60 Bar	Lower Mount	4" (100 mm)	1/2"
1210168	M105RL0/100	0 +100 Bar	Lower Mount	4" (100 mm)	1/2"
1210090	M105RL0/160	0 +160 Bar	Lower Mount	4" (100 mm)	1/2"
1210089	M105RL0/250	0 +250 Bar	Lower Mount	4" (100 mm)	1/2"
1232049	M105RL0/315	0 +315 Bar	Lower Mount	4" (100 mm)	1/2"
1210078	M105RL0/400	0 +400 Bar	Lower Mount	4" (100 mm)	1/2"
1210088	M105RL0/600	0 +600 Bar	Lower Mount	4" (100 mm)	1/2"
1228545	M105RL0/1000	0 +1000 Bar	Lower Mount	4" (100 mm)	1/2"

// R2YM63A

**Stainless Steel 304 Glycerine Gauge DN63  
Back Mount**



Item Code	Note	Pressure Range (bar)	Conn. Position	Gauge Size	Ports Size
1225832	M637PFL0/4	0 +4 Bar	Back Mount	2"1/2 (63 mm)	1/4"
1223182	M637PFL0/6	0 +6 Bar	Back Mount	2"1/2 (63 mm)	1/4"
1210085	M637PFL0/10	0 +10 Bar	Back Mount	2"1/2 (63 mm)	1/4"
1223157	M637PFL0/16	0 +16 Bar	Back Mount	2"1/2 (63 mm)	1/4"
1210151	M637PFL0/25	0 +25 Bar	Back Mount	2"1/2 (63 mm)	1/4"
1223181	M637PFL0/40	0 +40 Bar	Back Mount	2"1/2 (63 mm)	1/4"
1210084	M637PFL0/60	0 +60 Bar	Back Mount	2"1/2 (63 mm)	1/4"
1210083	M637PFL0/100	0 +100 Bar	Back Mount	2"1/2 (63 mm)	1/4"
1210071	M637PFL0/160	0 +160 Bar	Back Mount	2"1/2 (63 mm)	1/4"
1210072	M637PFL0/250	0 +250 Bar	Back Mount	2"1/2 (63 mm)	1/4"
1210162	M637PFL0/400	0 +400 Bar	Back Mount	2"1/2 (63 mm)	1/4"
1210086	M637PFL0/600	0 +600 Bar	Back Mount	2"1/2 (63 mm)	1/4"



REV.1.1

## // R2YM10A

Stainless Steel 304 Glycerine Gauge DN100  
Back Mount

Item Code	Note	Pressure Range (bar)	Conn. Position	Gauge Size	Ports Size
1228548	M107PFL0/2.5	0 +2,5 Bar	Back Mount	4" (100 mm)	1/2"
1232084	M107PFL0/4	0 +4 Bar	Back Mount	4" (100 mm)	1/2"
1222451	M107PFL0/6	0 +6 Bar	Back Mount	4" (100 mm)	1/2"
1222443	M107PFL0/10	0 +10 Bar	Back Mount	4" (100 mm)	1/2"
1228549	M107PFL0/16	0 +16 Bar	Back Mount	4" (100 mm)	1/2"
1222446	M107PFL0/25	0 +25 Bar	Back Mount	4" (100 mm)	1/2"
1228550	M107PFL0/40	0 +40 Bar	Back Mount	4" (100 mm)	1/2"
1228551	M107PFL0/60	0 +60 Bar	Back Mount	4" (100 mm)	1/2"
1228552	M107PFL0/100	0 +100 Bar	Back Mount	4" (100 mm)	1/2"
1223147	M107PFL0/160	0 +160 Bar	Back Mount	4" (100 mm)	1/2"
1223148	M107PFL0/250	0 +250 Bar	Back Mount	4" (100 mm)	1/2"
1232085	M107PFL0/315	0 +315 Bar	Back Mount	4" (100 mm)	1/2"
1223150	M107PFL0/400	0 +400 Bar	Back Mount	4" (100 mm)	1/2"
1223149	M107PFL0/600	0 +600 Bar	Back Mount	4" (100 mm)	1/2"

## // ACCESSORIES PRESSURE GAUGES

### // R2YMA00\_PR **NEW**

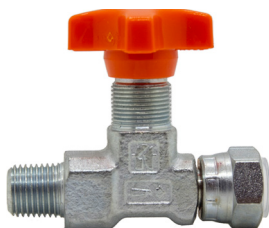
Gauge Rubber Protection DN63



Item Code	Note	Conn. Position	Gauge Size
1222458	RUBBER PROT	Lower Mount	2"1/2 (63 mm)
1255298	RUBBER PROT	Lower Mount	4" (100 mm)

### // FCVTVM11 - THROTTLE VALVE MANOMETER

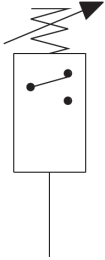
Manufacturer: Marchesini



Item Code	Note	Ports Size	WP (bar)	Connection 1P
1219930	EM001L	1/4"	400	Solid Male
1222739	EM001N	1/4"	400	Solid Female

REV.1.1

## // PRESSURE SWITCHES

// R2YMA00\_SW - PRESSURE SWITCH  
TS-SERIE

**Construction:** TS51: 1 pressure range  
TS52: 2 pressure ranges  
Both types is possible to used as NO/NC  
Electrical connection: M12, not included  
**Manufacturer:** Argo Hytos

Item Code	Note	Max WP (bar)	Pressure Range (bar)	Ports Size
1253426	TS52-100-2-1-1	100,0	0 +100 Bar	1/4"
1253424	TS51-250-1-1-1	250,0	0 +250 Bar	1/4"
1253427	TS52-250-2-1-1	250,0	0 +250 Bar	1/4"
1253428	TS52-400-2-1-1	400,0	0 +400 Bar	1/4"
1253425	TS51-400-1-1-1	400,0	0 +400 Bar	1/4"

## // CONTROL &amp; ELECTRONICS

We can offer the market customized control solutions that are userfriendly, safe and durable. Some common applications are rescue equipment, recovery vehicles, rear and lifts, mud cleaners and truck-mounted cranes.

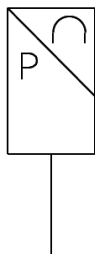


# // PRESSURE TRANSDUCERS

## // R2YMA00\_SE - PRESSURE TRANSDUCER PSCG/TSCG

**Construction:** PSCG = Pressure transducer  
TSCG = Pressure and temperature transducer

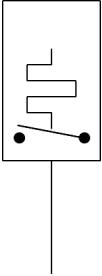
Electrical connection: M12, not included



Item Code	Note	Max WP (bar)	Ports Size	Notes
1253429	PSCG-1-100M-1	100,0	1/4"	4-20MA
1253432	PSCG-2-100M-1	100,0	1/4"	0-5V
1253435	PSCG-4-100M-1	100,0	1/4"	0-10V
1253438	TSCG-3-100M-1	100,0	1/4"	1-5V WITH TEMP
1253430	PSCG-1-250M-1	250,0	1/4"	4-20MA
1253433	PSCG-2-250M-1	250,0	1/4"	0-5V
1253436	PSCG-4-250M-1	250,0	1/4"	0-10V
1253439	TSCG-3-250M-1	250,0	1/4"	1-5V WITH TEMP
1253431	PSCG-1-400M-1	400,0	1/4"	4-20MA
1253434	PSCG-2-400M-1	400,0	1/4"	0-5V
1253437	PSCG-4-400M-1	400,0	1/4"	0-10V
1253440	TSCG-3-400M-1	400,0	1/4"	1-5V WITH TEMP
1253441	TS3-D-400-2-1-1	400,0	1/4"	DIGITAL SENSOR/SWITCH

REV.1.1

## // TEMPERATURE SWITCHES

// TTTMS23 - TEMPERATURE  
TRANSDUCER TM**Construction:** Electrical connection: M12, not included**Ports:** 1/2" BSP Outer thread**Manufacturer:** Argo Hytos

Item Code	Note	Temp. Range (°C)
1225362	TM1-140-2-250-2-1	-40 - 145

# // CONNECTORS

## // ACCCON21 - ELECTRICAL CONNECTOR FOR VALVES/SWITCHES/ TRANSDUCERS

**Construction:** 4900438 = 90 degrees + 5 m cable  
 4900439 = 90 degrees  
 4900440 = straight  
**Manufacturer:** API Pneumatic



Item Code	Note	Voltage (V)	Elect. Conn.	Rectifier	Varistor	LED
4900354	32119	-	Hirschmann	NO	NO	NO
4900429	032119X/ATEX	-	Hirschmann	NO	YES	NO
4900438	KM4-A-B-C2	-	M12	NO	NO	NO
4900440	KM4-S-B	-	M12	NO	NO	NO
4900439	KM4-A-B	-	M12	NO	NO	NO
4900430	32208	115V DC	Hirschmann	NO	YES	YES
4900246	53209TR2M1	230V AC	Hirschmann	YES	YES	YES
4900431	32209	230V AC	Hirschmann	NO	YES	YES
4900353	32207	24V DC	Hirschmann	NO	YES	YES

## // MINI POWERPACK

We supply mini powerpacks that are standardized for application areas such as loading docks, tippers, trucks, rear gable lifts etc.

We also offer technical consultation, draw up and design customerspecific system solutions as well as construction and installation of hydraulic systems according to your wishes.





# // DUNLOP HIFLEX SCANDINAVIA

## // SWEDEN

### HEADQUARTER DUNLOP HIFLEX AB

Seldonsvägen 2, Halmstad  
+46 (0)104 14 44 00  
info@dunlophiflex.se

### BORLÄNGE

+46 (0)104 14 46 00  
borlange@dunlophiflex.se

### GÖTEBORG

+46 (0)104 14 45 40  
goteborg@dunlophiflex.se

### HALMSTAD

+46 (0)104 14 44 04  
halmstad@dunlophiflex.se

### HELSINGBORG

+46 (0)104 14 45 60  
helsingborg@dunlophiflex.se

### LJUNGBY

+46 (0)104 14 45 20  
ljungby@dunlophiflex.se

### MALMÖ

+46 (0)104 14 45 00  
malmo@dunlophiflex.se

### NORRKÖPING

+46 (0)104 14 45 70  
norrkoping@dunlophiflex.se

### STOCKHOLM JÄRFÄLLA

+46 (0)104 14 45 80  
stockholm@dunlophiflex.se

### STOCKHOLM KUNGENS KURVA

+46 (0)104 14 45 90  
kungenskurva@dunlophiflex.se

### UMEÅ

+46 (0)104 14 45 30  
umea@dunlophiflex.se

## VÄXJÖ

+46 (0)104 14 45 10  
vaxjo@dunlophiflex.se

## ÖREBRO

+46 (0)104 14 45 50  
orebro@dunlophiflex.se

## // NORWAY

### HEADQUARTER DUNLOP HIFLEX AS

Jogstadsveien 39, Kjeller  
+47 23 00 47 00  
info@dunlophiflex.no

### BERGEN

+47 23 00 47 70  
bergen@dunlophiflex.no

### HARSTAD

+47 23 00 48 10  
harstad@dunlophiflex.no

### KRISTIANSAND

+47 23 00 47 50  
kristiansand@dunlophiflex.no

### KJELLER

+47 23 00 47 00  
oslo@dunlophiflex.no

### STAVANGER

+47 23 00 47 60  
stavanger@dunlophiflex.no

### SARPSBORG

+47 23 00 48 30  
sarpsborg@dunlophiflex.no

### TROMSØ

+47 23 00 48 20  
tromso@dunlophiflex.no

## TRONDHEIM

+47 23 00 48 00  
trondheim@dunlophiflex.no

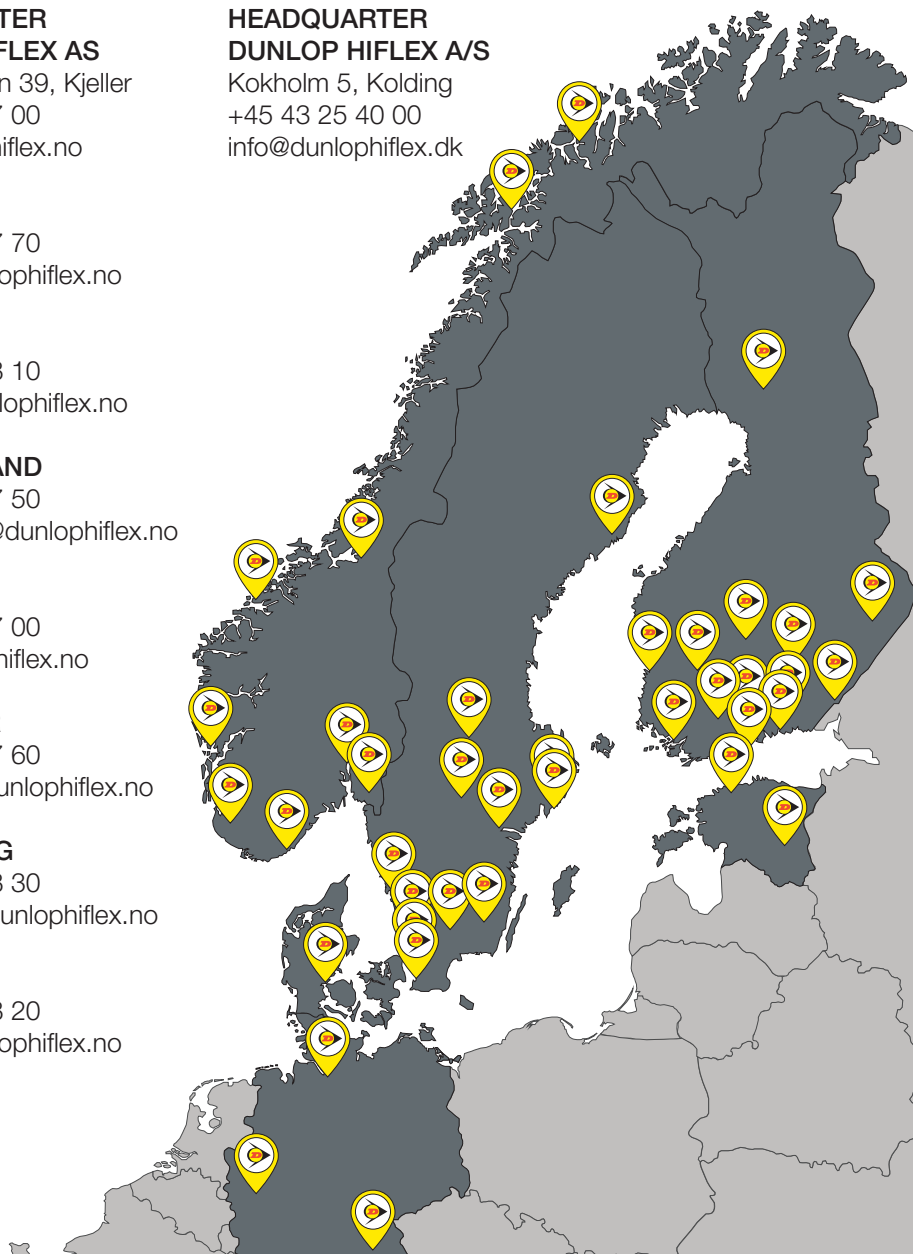
## ÅLESUND

+47 23 00 47 80  
alesund@dunlophiflex.no

## // DENMARK

### HEADQUARTER DUNLOP HIFLEX A/S

Kokholm 5, Kolding  
+45 43 25 40 00  
info@dunlophiflex.dk



### HEADQUARTER Dunlop Hiflex AB

Seldonsvägen 2  
301 62 Halmstad - Sweden  
Tel +46 (0) 10 414 44 00 - info@dunlophiflex.se  
www.dunlophiflex.se